



Waldegrave Park, TW1

£399,950

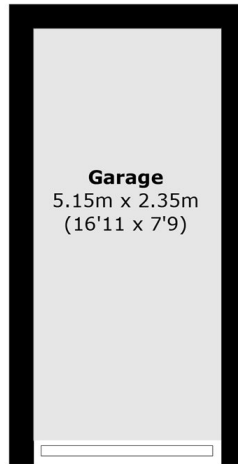
This spacious and bright two double bedroom top floor apartment is located on a very sought after road. The property benefits from being in fantastic order throughout with nothing left to do aside unpack. There is share of the freehold, a garage, access to beautiful well-kept communal gardens & no onward chain.

Waldegrave Park is a beautiful tree-lined road with proximity to transport network and excellent primary and secondary schools, Teddington high street, the River Thames and Bushy Park. Also close by is Strawberry Hill mainline station which has links to London Waterloo.

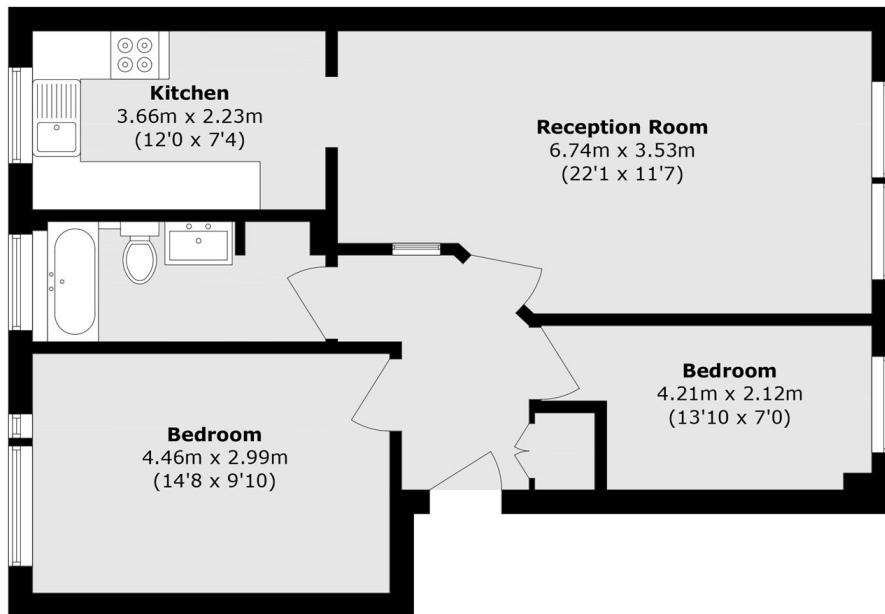
Features

- Two Double Bedrooms
- Top Floor Apartment
- Fantastic Condition Throughout
- Large Communal Gardens
- Share Of Freehold
- Garage & No Onward Chain

Waldegrave Park, Strawberry Hill, TW1



Garage



Third Floor

Total area (approx.): 65.8 sq. m (708.2 sq. ft)
Garage area (approx.): 12.1 sq. m (130.2 sq. ft)