

tavistockbow

For Rent



People Make Places



King Street, Covent Garden WC2

1 bedroom | 506 sq ft

£800 pw

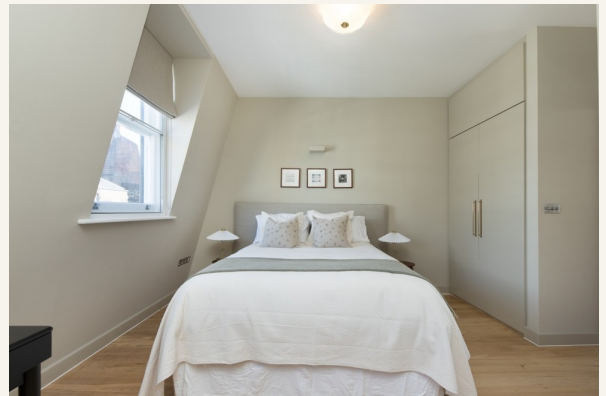




A stunning one bedroom apartment in a contemporary style that overlooks both King Street, one of Covent Garden's most sought after addresses and St Paul's Church Gardens. Access is via direct lift access fibre optic broadband is also included in the rent. Available February furnished.

What you need to know

- One bedroom
- One ensuite bathroom
- Separate WC
- Open plan reception room
- Views to gardens
- Furnished
- Available February
- Just off the Pizza which has 24hr security
- Fibre optic broadband
- Close to Covent Garden & Leicester Square tube stations





Overview

Situated on the top floor, with direct lift access, of a well-maintained period building, this one bedroom apartment overlooks both King Street, one of Covent Garden's most sought after addresses and St Paul's Church Gardens. Forming part of the Covent Garden Estate, the apartment is professionally managed to the highest standard with particular care and attention given to the public realm and greening. Set within the eaves and flooded with natural light through beautiful sash windows, the open-plan kitchen and living area have views to the gardens, and the good double bedroom towards the neighbouring building's roof tops. There is a large en-suite bathroom and separate guest WC. Fibre optic broadband is also included.

King Street is one of Covent Garden's most sought after addresses and benefits from being fully pedestrianised for 20 hours a day. Multiple transport options are within easy reach, including Covent Garden (Piccadilly line – 49 minutes to Heathrow), Leicester Square (Piccadilly and Northern lines) and





Charing Cross (National Rail, Northern and Bakerloo lines) stations.

The apartment is available in February on a furnished basis. Subject to contract and satisfactory references, the landlord offers a one-year to three lease with a mutual rolling six-month break clause. Westminster Council tax band: E.



King Street, Covent Garden WC2

People Make Places

London is a collection of inspiring urban villages and one of the most exciting places in the world to live, work & play.

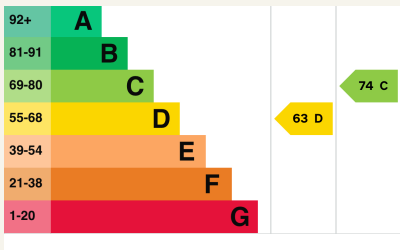
We work with both property owners and their occupiers, sharing the story of these vibrant neighbourhoods, conveying the unique soul & energy to future custodians, the people who'll keep them buzzing.

And unlike many real estate businesses we're not just about buildings, because streets & buildings don't make a neighbourhood.

We're about building relationships, because **people make places**.

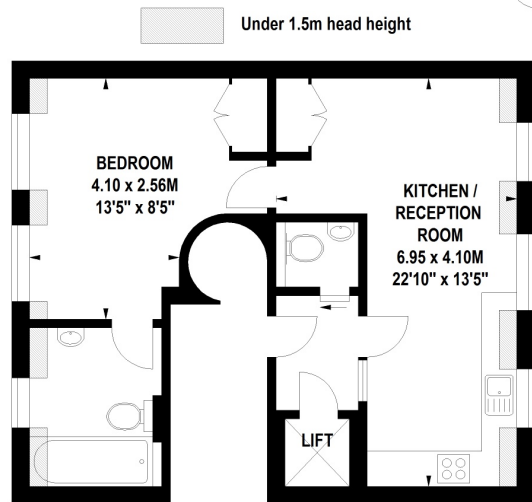
MISINTERPRITATION ACT [COPYRIGHT] DISCLAIMER: Tavistock Bow Ltd for themselves and for the vendor(s) of this property whose agents thy are, given notice that: 1. These particulars do not constitute, not constitute any part of, an offer or contract. 2. None of the statements contained in these particulars as to the property are to be relied on as statements or representations of fact. 3. Any intending purchaser or lessee must satisfy themselves by inspection or otherwise as to the correctness of each of the statements contained in these particulars. 4. The vendor(s) or lessor(s) do not make or give and neither Tavistock Bow Ltd nor any person in their employment has any authority to make or give any representation or warranty whatever in relation to this property. Finance Act 1989, Unless otherwise stated all prices and rents are quote exclusive of VAT. Property Misrepresentation Act 1991; These details are believed to be correct at the time of compilation but may be subject to subsequent amendment.

Follow us:     @tavistockbow



King Street, WC2

Approximate Gross Internal Area 47 sq m / 506 sq ft
(Excluding Lift)



Fourth Floor

Floor Plan produced for Tavistock Bow by Mays Floorplans © . Tel 020 3397 4594
Illustration for identification purposes only, not to scale
All measurements are maximum, and include wardrobes and window bays where applicable

tavistockbow

21 New Row, Covent Garden,
London, WC2N 4LE

t: 020 7477 2177
e: hello@tavistockbow.com
w: tavistockbow.com



King Street, Covent Garden WC2