



Hurfords

01733 380956
www.hurfords.co.uk

for sale

Hurfords

Elton Road, Wansford, Peterborough Freehold Price £270,000

Key Features



- Well-presented two-bedroom mid-terrace property
- Located in the popular and sought-after village of Wansford
- Ideal first-time buyer or buy-to-let investment
- No onward chain for a smoother purchase
- Well maintained throughout and ready to move into

The ground floor comprises a bright and welcoming living room, offering an ideal space to relax or entertain, leading through to a functional kitchen with ample storage and worktop space. The layout suits modern living while retaining a warm and homely feel.

To the first floor, the property offers two well-proportioned bedrooms, both benefiting from good natural light and flexibility for use as a main bedroom, guest room, nursery or home office.

Completing the accommodation is a clean and well-appointed bathroom, fitted with modern fixtures and finishes. Externally, the property benefits from on-street



parking and a low-maintenance lifestyle, making it a practical and appealing choice for a wide range of purchasers.

With strong rental potential, ease of maintenance and immediate move-in readiness, this property represents an excellent investment or first step onto the property ladder.

Wansford is a picturesque and sought-after village, renowned for its attractive setting, historic character and strong community spirit. The village offers a range of local amenities including public houses, cafés and scenic riverside walks, making it a popular choice for those seeking village living without sacrificing convenience.

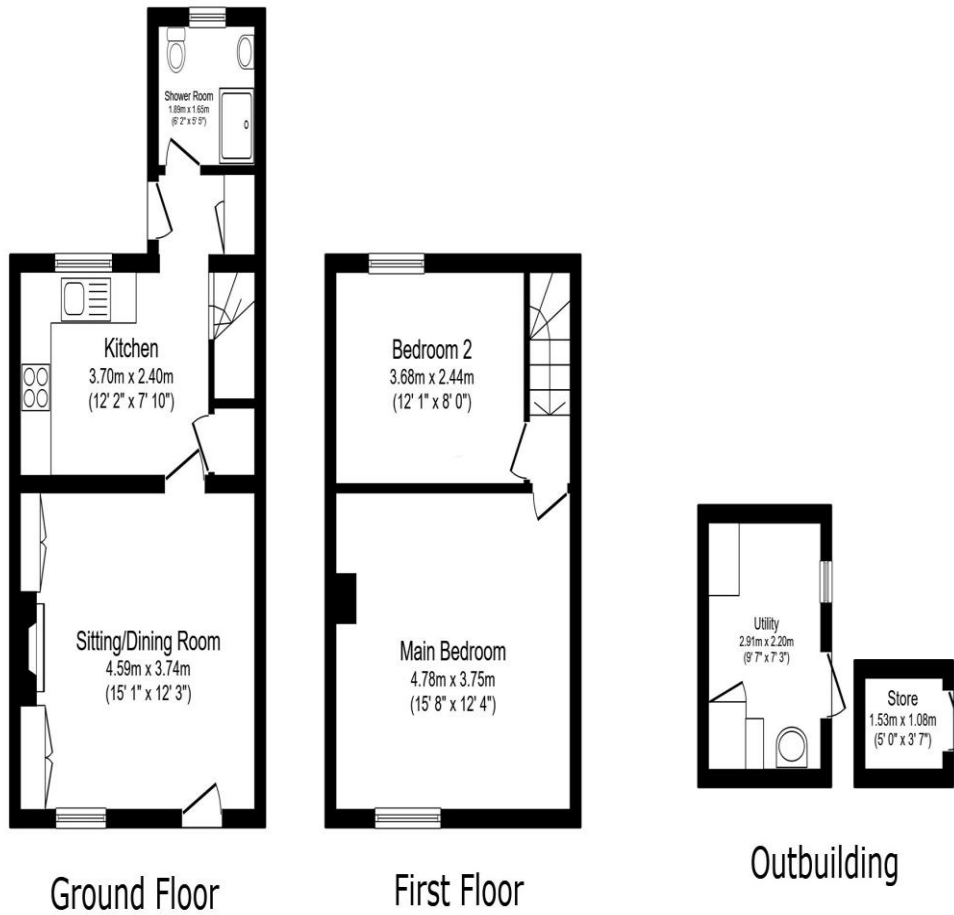
Ideally located, Wansford provides good access to nearby market towns and transport links, with road connections allowing for easy commuting to surrounding areas. The area is also well known for its beautiful countryside, offering excellent opportunities for walking, cycling and outdoor pursuits.

This combination of charm, accessibility and lifestyle appeal makes Wansford a consistently desirable location for homeowners and tenants alike.



Elton Road, Wansford, Peterborough, PE8 6JD

Approximate Gross Internal Area
Main House = 63.6 sq.m. (685 sq.ft.)
Outbuildings; 8.1 sq.m. (87 sq.ft.)
Total = 71.7 sq.m. (772 sq.ft.)



This floor plan is for illustrative purposes only. It is not drawn to scale. Any measurements, floor areas (including any total floor area), openings and orientations are approximate. No details are guaranteed, they cannot be relied upon for any purpose and do not form any part of any agreement. No liability is taken for any error, omission or misstatement. A party must rely upon its own inspection(s).

Selling your property?

Contact us to arrange a FREE home valuation.

 01733 380956

 Unit 5, The Barns Milton Lane, Castor, PETERBOROUGH, Cambridgeshire , PE5 7DH

 info@hurfords.co.uk

 www.hurfords.co.uk



 SCAN ME



Hurfords is a trading name of Sharman Quinney Holdings Limited which is registered in England and Wales under company number 4174227, Registered Office is Cumbria House, 16-20 Hockliffe Street, Leighton Buzzard, Bedfordshire, LU7 1GN. VAT Registration Number is 500 2481 05.

1: These particulars do not constitute part or all of an offer or contract. 2: The measurements indicated are supplied for guidance only and as such must be considered incorrect. 3: Potential buyers are advised to recheck the measurements before committing to any expense. 4: Hurfords has not tested any apparatus, equipment, fixtures, fittings or services and it is the buyers interests to check the working condition of any appliances. 5: Hurfords has not sought to verify the legal title of the property and buyers must obtain verification from their legal representative. 6: Intending purchasers will be asked to produce identification documentation at a later stage and we would ask your co-operation in order that there will be no delay in agreeing the sale. Ref: HUC104110 - 0004

