



**Guide Price**  
**£450,000**

**Freehold**

3x  3x  2x 

**Fortune Way, Kings Hill,  
West Malling, Kent,  
ME19**

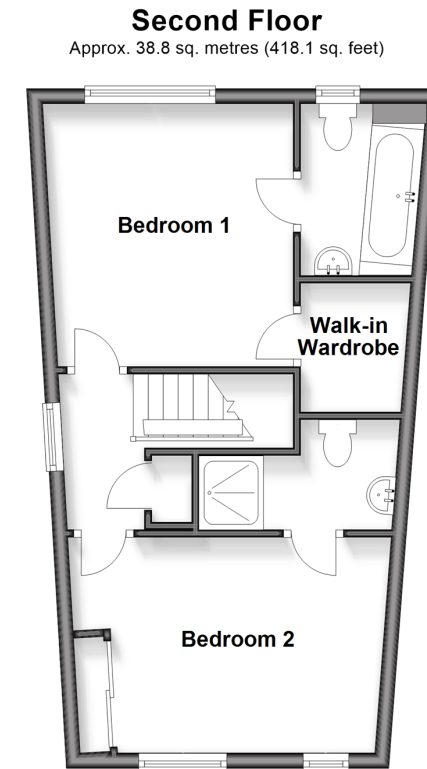
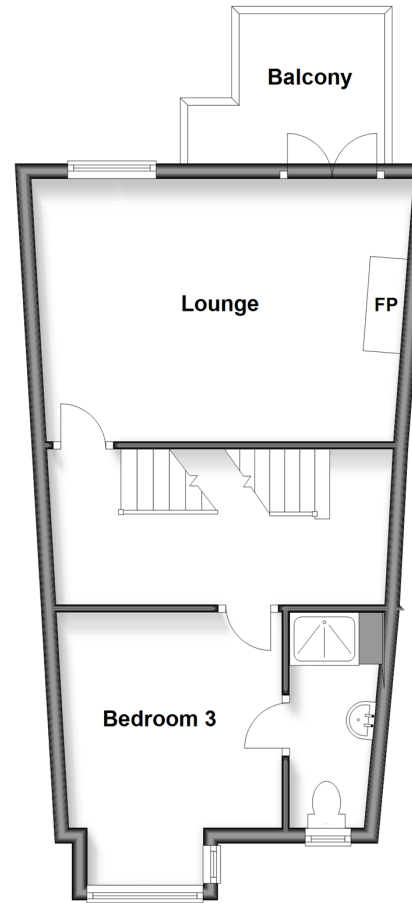
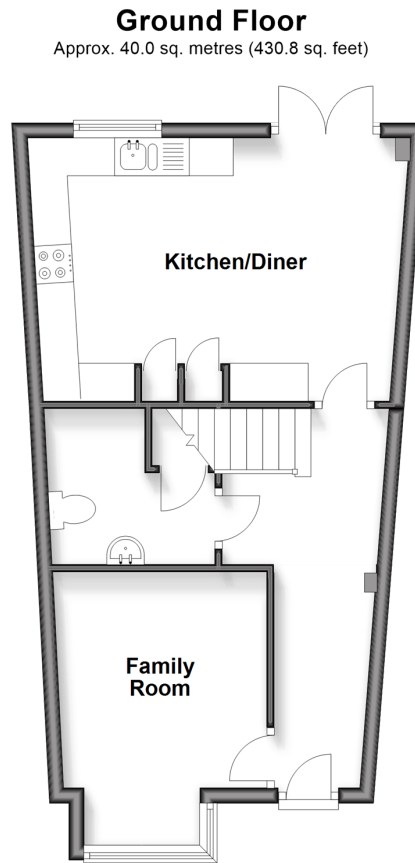
**OVER 60?**

Secure this property  
for up to **59% less!**

*Wards*  
Helping you move forwards

## First Floor

Approx. 40.1 sq. metres (431.6 sq. feet)



## Accommodation

### GROUND FLOOR

Entrance Hall  
Cloakroom  
Family Room: 11'6 x 9'6 (3.51m x 2.90m)  
Kitchen/Diner: 15'5 x 15'1 (4.70m x 4.60m)

### FIRST FLOOR

Landing  
Lounge: 16'9 x 11'6 (5.11m x 3.51m)  
Balcony  
Bedroom 3: 9'10 x 9'6 (3.00m x 2.90m)

### SECOND FLOOR

Landing  
Bedroom 1: 11'6 x 11'2 (3.51m x 3.41m)  
En-Suite Bathroom  
Walk-in Wardrobe  
Bedroom 2: 13'1 x 9'6 (3.99m x 2.90m)  
En-Site Shower Room

### OUTSIDE

Rear Garden  
Oversized Garage  
Allocated Parking



## Main features

- Modern town house located within close walking distance to shops & amenities
- Double bedrooms each with en-suite facilities
- Low maintenance rear garden & first floor sun terrace
- Garage & allocated parking
- No onward chain



### Nearest Schools

Primary Schools: Kings Hill School 0.3 miles, Valley Invicta Primary 0.4 miles, The Discovery School 0.9 miles  
Secondary Schools: Grange Park School 3.7 miles, The Malling School 3.9 miles, Wrotham School 4.5 miles



### Transport Information

Train Stations: West Malling 2.9 miles, East Farleigh 3.4 miles, New Hythe 3.6 miles



### Address

Fortune Way, Kings Hill, West Malling, Kent, ME19



### Directions

For directions to this property please contact us.



*Wards*  
Helping you move forwards

Call Kings Hill Branch 01732 222211 ■ [wardsofkent.co.uk](http://wardsofkent.co.uk)



- Legal advice should be taken to verify fixtures/fittings, planning, alterations and/or lease details
- Appliances & services are untested, dimensions are approximate and floor plans are not to scale
- Through a Homewise Home For Life Plan people aged 60+ can secure this property for up to 59% less, by purchasing a Lifetime Lease



12405347/20260221/MB/BC