

# Torcross Road

Ruislip • Middlesex • HA4 0TB  
Offers In Excess Of: £575,000



coopers  
est 1986

# Torcross Road

Ruislip • Middlesex • HA4 0TB

Offered to the market chain free, this spacious three-bedroom end of terrace A-Type Manor home on Torcross Road presents an excellent opportunity for families and buyers seeking a well-located property with generous living accommodation and scope to personalise. The ground floor features a bright and inviting living room with a charming bay window, creating a warm and comfortable space to relax. A separate dining room to the rear offers ample room for entertaining and family meals, while the fitted kitchen provides direct access to the garden and potential for extension (subject to planning permission). The property also benefits from an integral garage, offering additional storage or conversion potential. Upstairs, the first floor comprises three well-proportioned bedrooms, including a spacious principal bedroom with bay window, a large second double bedroom, and a third bedroom ideal for a child's room or home office. A family bathroom completes the accommodation. Externally, the property enjoys a larger-than-average plot for the area due to its end of terrace position, with side access and a private rear garden offering excellent potential for landscaping or further extension (STPP). Ideally situated on Torcross Road in Ruislip, the property is conveniently located close to local shops, well-regarded schools, and transport links, making it a superb choice for families and commuters alike.

CHAIN FREE

END TERRACE A TYPE MANOR HOME

THREE BEDROOMS

TWO RECEPTION ROOMS

FAMILY BATHROOM WITH SEPARATE W.C.

GALLEY KITCHEN

POTENTIAL TO EXTEND (STPP)

GARAGE

OFF STREET PARKING

1,122 SQ.FT.

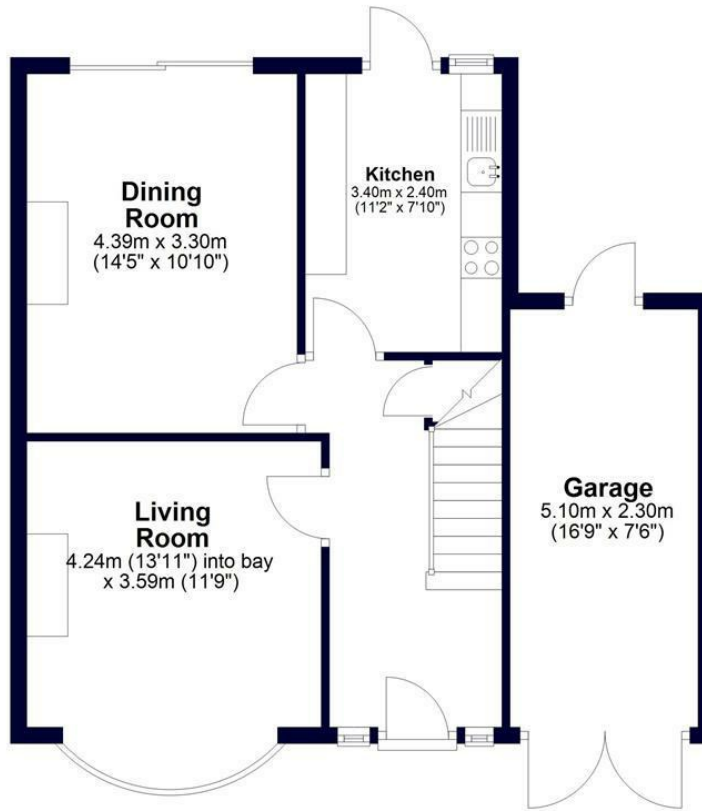
These particulars are intended as a guide and must not be relied upon as statements of fact. Your attention is drawn to the Important Notice on the last page.





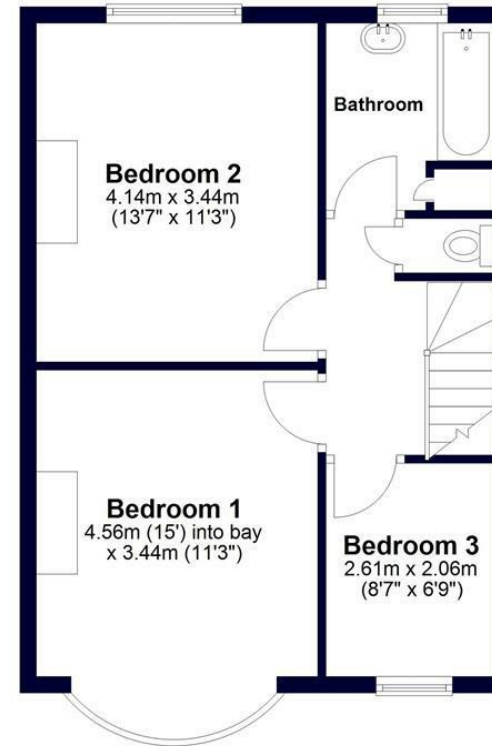
## Ground Floor

Approx. 59.0 sq. metres (635.3 sq. feet)



## First Floor

Approx. 45.2 sq. metres (486.9 sq. feet)



Total area: approx. 104.3 sq. metres (1122.2 sq. feet)

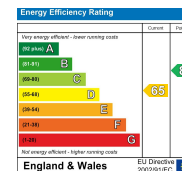


Whilst every effort has been made to ensure the accuracy of this floor plan, measurements of doors, windows, rooms and other items are approximate and no responsibility is taken for any errors. This plan is for illustrative purposes only and should be used as such by any prospective purchaser.  
©Property Pot. Produced on behalf of Coopers Residential.



71 Victoria Road, Ruislip Manor,  
Middlesex, HA4 9BH  
ruislipmanor@coopersresidential.co.uk

CoopersResidential.co.uk



Important Notice: These particulars, whilst believed to be accurate are set out as a general outline only for guidance and do not constitute any part of an offer or contract. Intending purchasers should not rely on them as statements or representation of fact, but must satisfy themselves by inspection or otherwise has the authority to make or give any representation or warranty in respect of the property.