

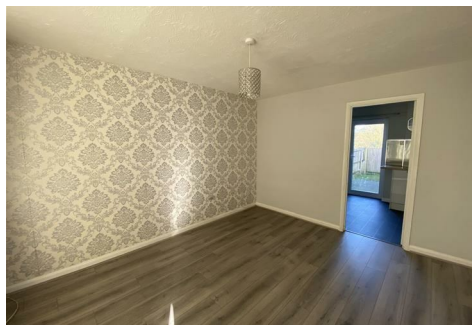


MARTINS ESTATES

SALES AND LETTINGS

Martins Estates Sales And Lettings High Street
Ashford
Kent
TN24 8SF

Tel: 01233610444

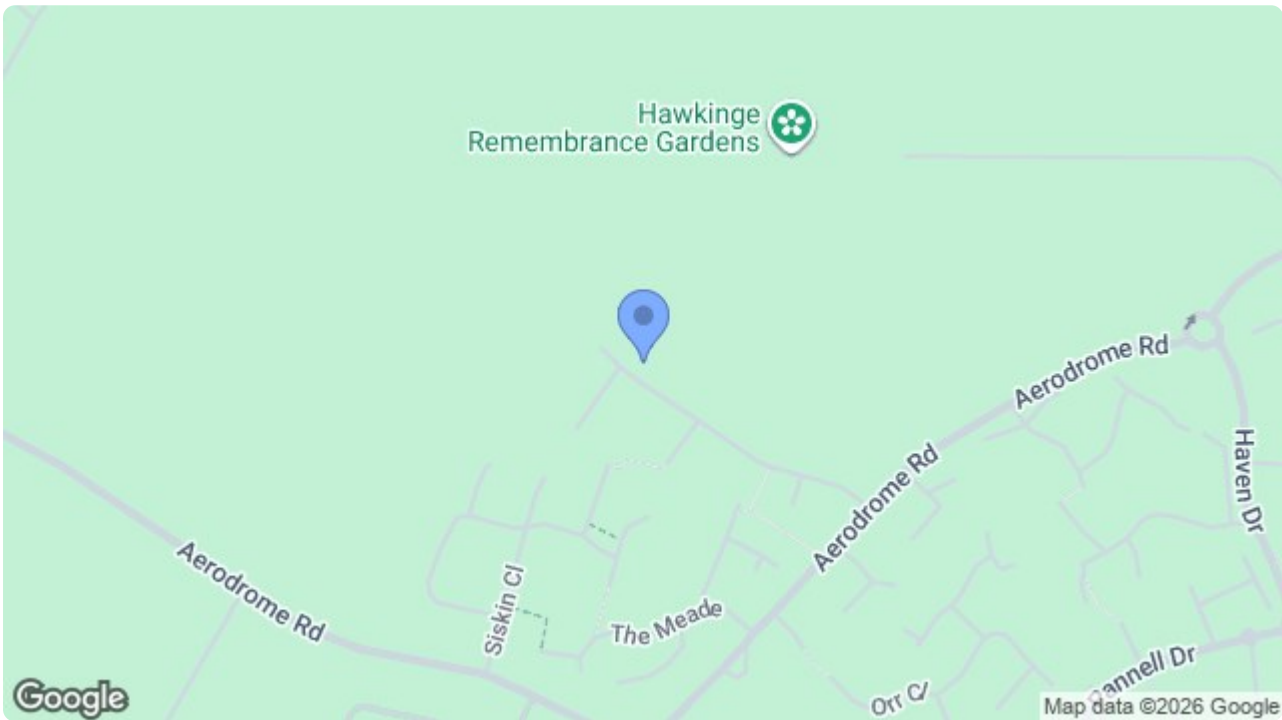


4 Gillman Close, Folkestone, Kent CT18 7NR

£1,150 Per Month

A two bedroom mid terrace house with off road parking for one vehicle. The property comprises kitchen/diner, lounge, family bathroom, two bedrooms and an enclosed rear garden. Available end of January 2026!

4 Gillman Close, Folkestone, Kent CT18 7NR



Energy Efficiency Rating		
	Current	Potential
Very energy efficient - lower running costs		
(92 plus) A		92
(81-91) B		
(69-80) C		
(55-68) D	63	
(39-54) E		
(21-38) F		
(1-20) G		
Not energy efficient - higher running costs		
England & Wales		EU Directive 2002/91/EC

Environmental Impact (CO ₂) Rating		
	Current	Potential
Very environmentally friendly - lower CO ₂ emissions		
(92 plus) A		
(81-91) B		
(69-80) C		
(55-68) D		
(39-54) E		
(21-38) F		
(1-20) G		
Not environmentally friendly - higher CO ₂ emissions		
England & Wales		EU Directive 2002/91/EC

69 HIGH STREET, ASHFORD, KENT TN24 8SF
Tel: 01233 610444 www.martinesestates.co.uk email: sales@martinesestates.co.uk



Martine Estates Property Management Ltd
Registered in England and Wales No. 10031401
Registered office: 69 High Street, Ashford, Kent, TN24 8SF
Martins Wilkins T/A Martins Estates Sales and Lettings