

## Admiralty Close, West Drayton, Middlesex, UB7 9NG

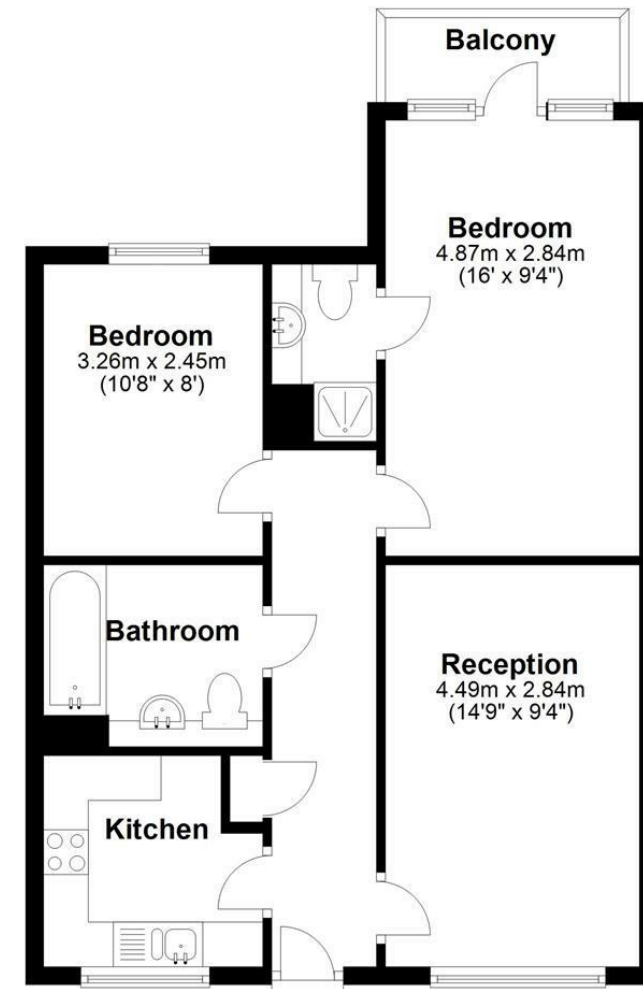
- Admiralty Close
- Two bedroom
- Furnished
- Available August
- First floor
- En-suite
- EPC rating- C

**£1,850 PCM**

**Description**

A modern two bedroom apartment located in a popular development within walking distance to the West Drayton Trainline. Presented with neutral colours throughout, wood laminate flooring, two bedrooms, balcony, en suite to the master bedroom, family bathroom, separate kitchen with gas hob and reception room. Available for August and presented furnished.

**First Floor**  
Approx. 57.1 sq. metres (614.2 sq. feet)



Total area: approx. 57.1 sq. metres (614.2 sq. feet)

**IMPORTANT NOTICE**

These particulars have been prepared upon information supplied by the Vendor and should be verified by your surveyors and solicitors. We have prepared these sales particulars as a general guide to give a broad description of the property. They are not intended to constitute part of an offer or contract. We have not carried out a structural survey and the services, appliances and specific fittings have not been tested. All photographs, measurements, floor plans and distances referred to are given as a guide only and should not be relied upon for the purchase of carpets or any other fixtures or fittings. Lease details service charge and ground rent (where applicable) are given as a guide only and should be checked and confirmed by your solicitor prior to exchange of contracts