



RAMSDEN ROAD, SW12

£550,000

One Double Bedroom
Victorian
Three Floors
Incredible Private Garden Nightingale
Triangle
Chain Free

@marshandparsons
marshandparsons.co.uk

MARSH &
PARSONS



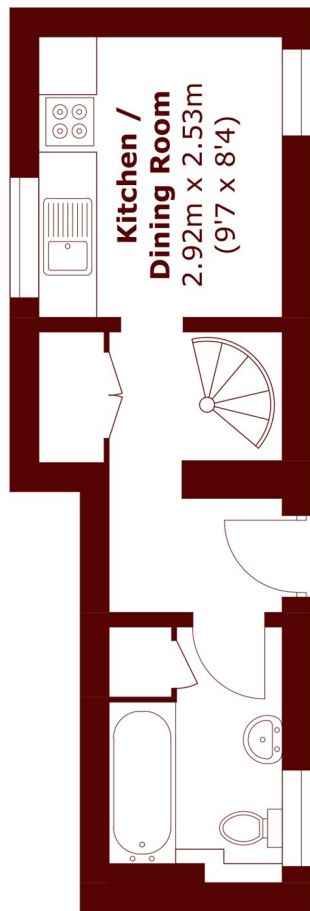
ABOUT THE PROPERTY

This wonderful unique one bedroom flat is packed with charm, arranged over three floors the spacious living room leads into a sunny conservatory, opening onto an incredible private garden - approximately 50 ft long.

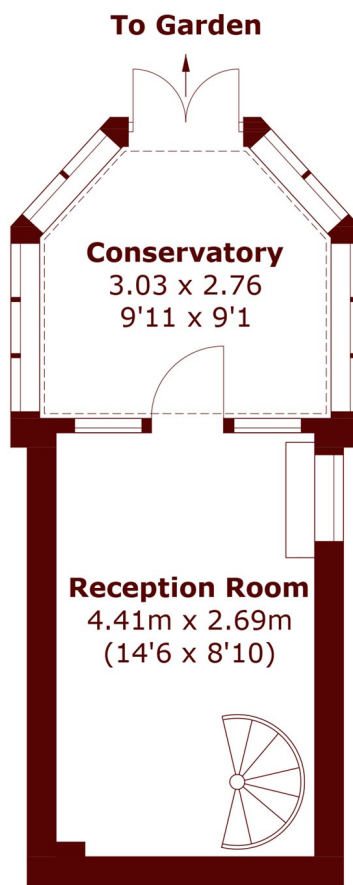
Ramsden Road is centrally positioned in the Nightingale Triangle. With Balham High Road is just a few steps away, you have an endless choice of local restaurants, shops, coffee shops and some excellent pubs at your doorstep. Balham station provides easy access in and out of town with frequent Northern Line and National Railway services.



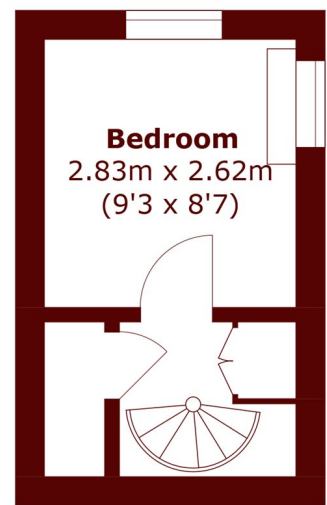
STEP INSIDE RAMSDEN ROAD



Basement



Ground Floor



First Floor

Total area (approx.): 51.3 sq. m (552.2 sq. ft)
(Including Basement)

Balham & Clapham South
020 7326 9920

Energy Rating: E We aim to make our particulars both accurate and reliable. However, they are not guaranteed; nor do they form part of an offer or contract. If you require clarification on any points then please contact us, especially if you're traveling some distance to view. Please note that appliances and heating systems have not been tested and therefore no warranties can be given as to their good working order

**MARSH &
PARSONS**