

**Head Office:**  
Dixon Kelley Estate Agents  
1 Penn Court  
Station Road, West Moors  
Dorset. BH22 0JJ

# HAMPSHIRE PARK HOMES

**DRAFT**

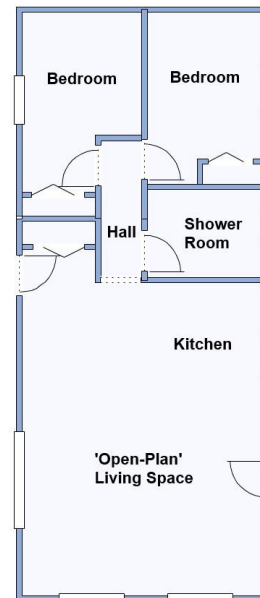
[www.hampshireparkhomes.com](http://www.hampshireparkhomes.com)

**Telephone: 01202 877511**

**33 Whitehaven Park, Chapel Lane, Langley, Southampton. SO45 1YZ**



**Luxury New Home - Ready for Early Occupation!**



This drawing has been prepared for diagrammatic purposes only.

## 2 Bedroom Park Home approx 34' x 16'

Accommodation & approximate room dimensions:

- Prestige 'Sonata' Park Home
- 'Open-Plan' Living Space:: approx 21'4" x 15' max. Range of floor cupboards. Built-in oven, hob & cooker hood. Integrated fridge/freezer & dishwasher. Double cupboard housing combination gas boiler & washing machine. Ample space for lounge & dining suite. Door to garden.
- Bedroom 1: approx 11' x 7'2" Plus fitted wardrobe.
- Bedroom 2: approx 10'9" x 7'2". Fitted wardrobe.
- Shower Room: Walk-in shower. Vanity unit & WC.
- Gas Central Heating (system untested)
- PVCu Double-Glazing
- Stylish Interior Design & Fully Furnished
- 10 year Gold Shield Warranty
- Parking close to home
- Age Restriction 50+ No Pets Allowed
- Popular Residential Park near to local shop & services and on the edge of the renowned New Forest National Park.

## Popular Residential Park



**Price £180,000**

**Pitch Fee: approx £49.90 per week**

**Subject to Annual Review**

**Council Tax Band: 'A' Tenure: 1983 Mobile Homes Act Agreement**

**VIEWING STRICTLY BY APPOINTMENT WITH THE VENDOR'S AGENT Hampshire Park Homes 01202 877511**

**IMPORTANT NOTE:** These particulars are believed to be correct but their accuracy is not guaranteed. They do not form part of any contract. Nothing in these particulars shall be deemed to be a statement that the property is in good structural condition or otherwise, nor that any of the services, appliances, equipment or facilities are in good working order or have been tested. Purchasers should satisfy themselves on such matters prior to purchase Ref.W04703

*The recommended specialist in Park Home sales*  
Partner: Simon Dixon

