



Price
£390,000

Freehold

3x  2x  1x 

**Bermuda Road,
Grasmere Gardens
(Phase 1), Whitstable,
Kent, CT5**

OVER 60?

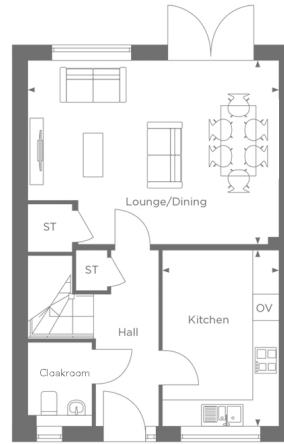
Secure this property
for up to **59% less!**

Wards
Helping you move forwards

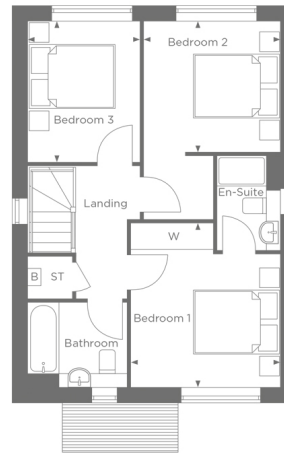


Main features

- **Detached 3 bedroom house**
- **Light filled lounge/dining area with French doors leading to the garden**
- **Bespoke design fitted kitchen Ground floor cloakroom**
- **En-suite and fitted wardrobes to the main bedroom**
- **Car port and parking space with EV charging.**



THE TANSY
Ground Floor
House Total Area - 94.7sq.m / 1020sq.ft



THE TANSY
First Floor
House Total Area - 94.7sq.m / 1020sq.ft

Accommodation

GROUND FLOOR

- Hallway
- Cloakroom
- Kitchen : 13'0 x 8'5 (3.97m x 2.57m)
- Lounge/Dining: 18'6 x 13'6 (5.64m x 4.12m)

FIRST FLOOR

- Landing
- Bedroom 1 : 12'1 x 11'0 (3.69m x 3.36m)
- Ensuite Shower Room
- Bedroom 2: 10'1 x 9'7 (3.08m x 2.92m)
- Bedroom 3 : 10'4 x 8'3 (3.15m x 2.52m)
- Bathroom

OUTSIDE

- Driveway
- Car Port
- Front Garden
- Rear Garden

Call Whitstable - 01227 772272 ■ wardsofkent.co.uk

■ Through a Homewise Home For Life Plan people aged 60+ can secure this property for up to 59% less, by purchasing a Lifetime Lease



12034004/20260327/AR/NF