



Southacre  
Hyde Park Crescent, W2

CHESTERTONS









A well-proportioned lateral apartment arranged on the fifth floor, extending to approximately 1,547 sq ft, and benefitting from an east-west aspect with far-reaching views. The property offers four bedrooms, two bathrooms, and a guest WC, together with a spacious double reception room providing ample space for both formal seating and a dedicated dining area. The apartment is presented in fair condition and forms part of a well-maintained building with portage and lift access. Ideally located on Hyde Park Crescent, the property is moments from Connaught Village, Hyde Park, and Paddington Station, with an excellent selection of nearby restaurants, pubs, and local shops.

- Fifth-floor apartment
- Lateral layout
- East-west aspect
- Four bedrooms, two bathrooms
- Guest WC
- Double reception
- Portered building
- Lift access
- Close Connaught Village
- Near Hyde Park
- Paddington Station nearby
- Close to local shops, restaurants & pubs

Asking Price £2,500,000

**Tenure:** Share of Freehold and a 978 Year Lease (March 3004)

**Service Charge:** Please Enquire

**Ground Rent:** None

**Local Authority:** City of Westminster

**Council Tax Band:** H

*Chestertons Hyde Park & Marylebone Sales*

40 Connaught Street

London

W2 2AB

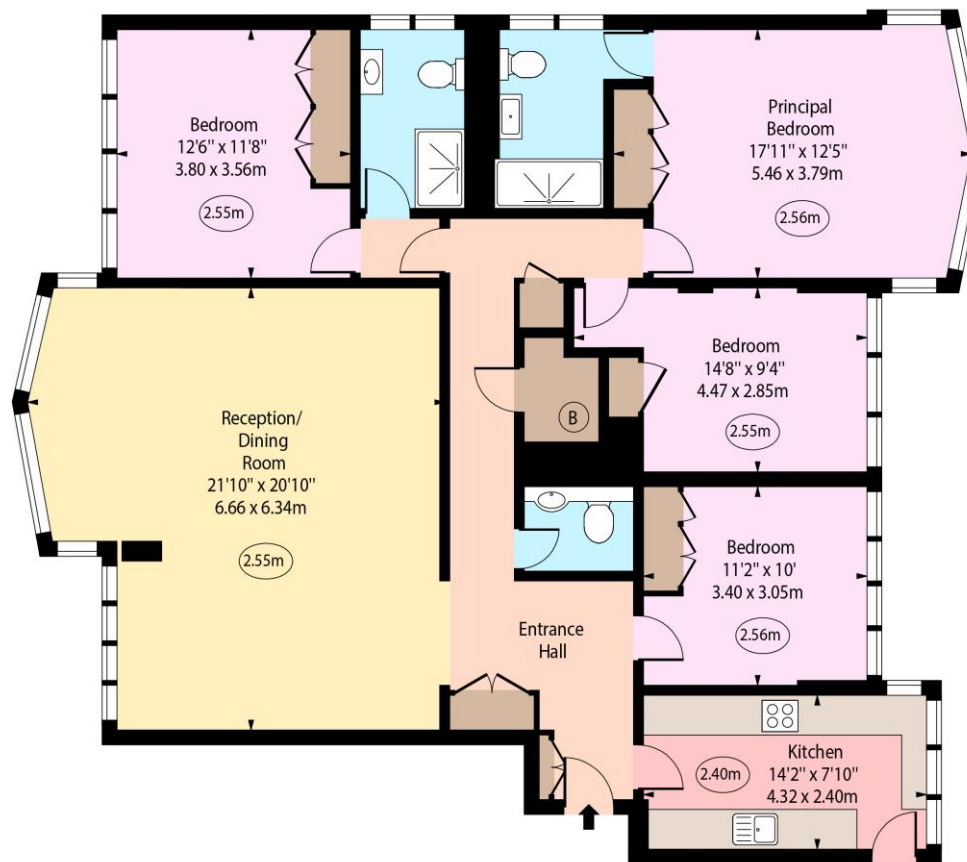
hydepark@chestertons.co.uk

020 7298 5900

[chestertons.co.uk](https://www.chestertons.co.uk)

Southacre,  
Hyde Park Crescent, W2

○ - Ceiling Height



Fifth Floor

Approx Gross Internal Area 1547 Sq Ft - 143.72 Sq M

Every attempt has been made to ensure the accuracy of the floor plan shown.  
However, all measurements, fixtures, fittings, and data shown are approximate interpretations and  
for illustrative purposes only. Measured according to the RICS. Not To Scale.

[www.goldlens.co.uk](http://www.goldlens.co.uk)

Ref. No. 030287J

Chesterton UK Services Limited trading as Chestertons for themselves and for the vendor of this property whose agents they are, give notice that (i) these particulars do not constitute any part of an offer or contract, (ii) all statements contained within these particulars are made without responsibility on the part of Chestertons or the vendor, (iii) whilst made in good faith, none of the statements contained within these particulars are to be relied upon as a statement or representation of fact, (iv) any intending purchasers must satisfy themselves by inspection or otherwise as to the correctness of each of the statements contained within these particulars, (v) the vendor does not make or give either Chestertons or any person in their employment any authority to make or give representation or warranty whatsoever in relation to this property. Wide angle lenses may be used. ©Copyright Chestertons | Chesterton UK Services Limited | Registered Office 40 Connaught Street, Hyde Park, London W2 2AB Registered Company Number 05334580.



This paper is  
100% recyclable