

Radnor Road, TW1

£489,950

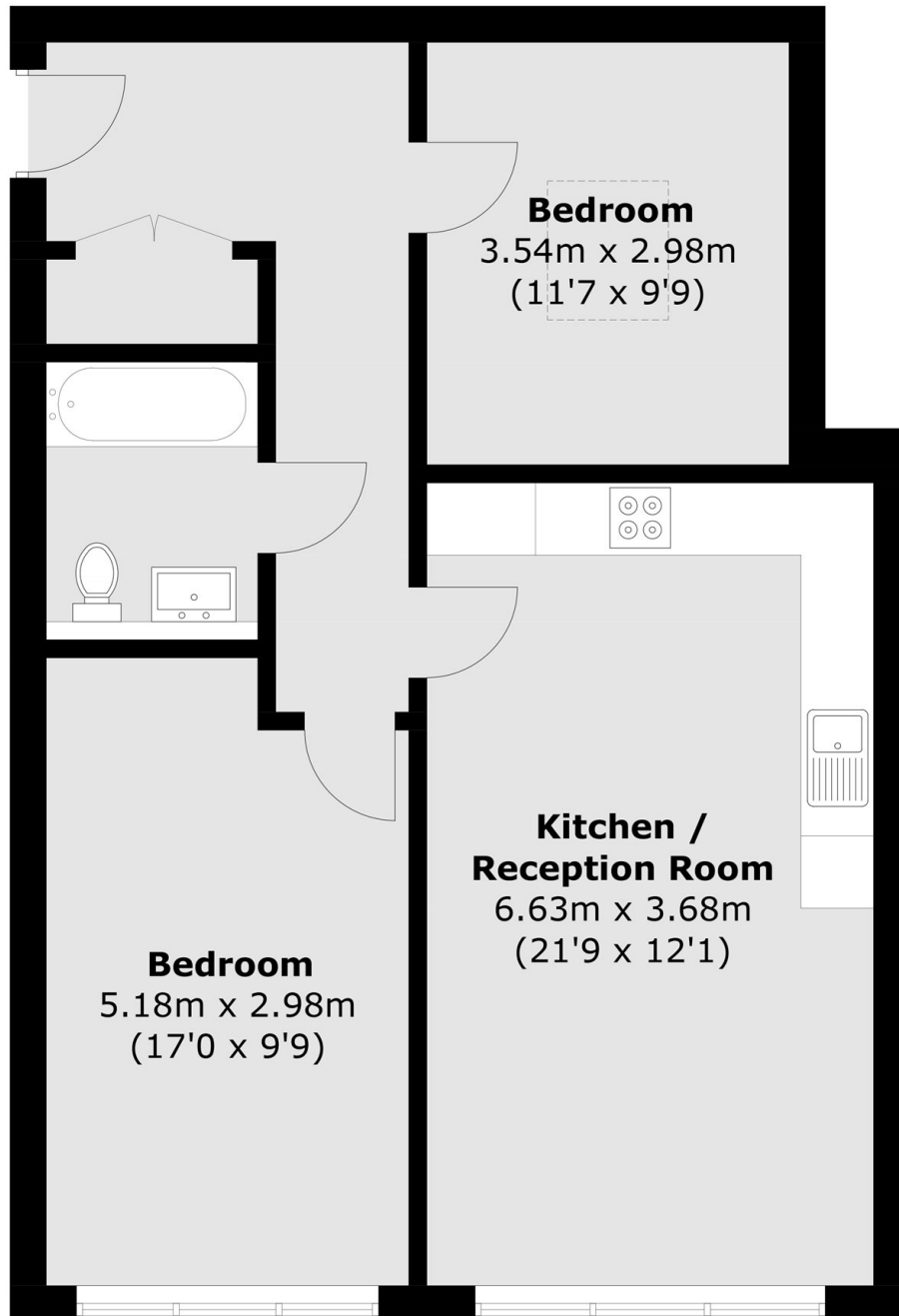
This fabulous two double bedroom modern apartment was built in 2020 to a high standard and is ideal for anyone wanting to get on the property ladder or as an investment. Situated on the top floor, the property benefits from having a long lease with low charges, underfloor heating and integrated appliances.

Heath Road is the high street running through the heart of the town centre and it offers a vast array of shops, pubs, café's and restaurants. Twickenham mainline station provides a fast train to London Waterloo and there are also various bus routes in and out of Twickenham and through to Richmond.

Features

- Two Double Bedrooms
- Excellent Condition
- Underfloor heating
- Secure Entry Phone System
- Long Lease With Low Charges
- High Street Location

Radnor Road, Twickenham, TW1



Total area (approx.): 68.1 sq. m (733.0 sq. ft)