



## WHARNCLIFFE MEWS, SW4

£425,000

- One bedroom
- Open plan living
- Modern finish
- Balcony
- Chain free
- Energy rating: C





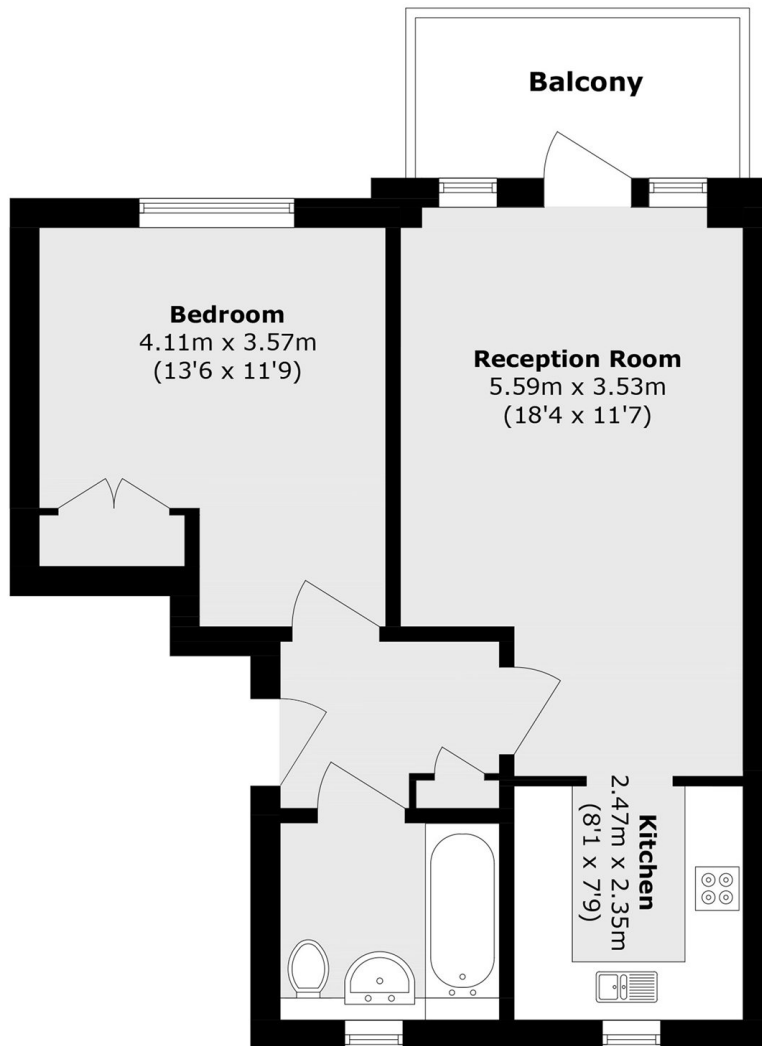
## ABOUT THE HOME

A recently refurbished one bedroom apartment situated in a quiet residential development just off of Clarence Avenue. This property is offered to the market chain free and early viewing is recommended.

Situated within close proximity of Clapham Common (Northern line) Underground (0.9 mile) and regular bus routes, Wharncliffe Mews is ideally located for the shops, cafés and restaurants of Clapham High Street and the ever-popular Abbeville Road, as well as the open expanses of Clapham Common itself.







Total area (approx.): 48.8 sq. m (525.2 sq. ft)

Balcony area (approx.): 5.5 sq. m (59.2 sq. ft)

#### JACKSONS CLAPHAM

73 Abbeville Road, London,  
SW4 9JN

Sales: 020 8487 3177

Lettings: 020 8487 3178

Energy Rating: C We aim to make our particulars both accurate and reliable. However they are not guaranteed; nor do they form part of an offer or contract. If you require clarification on any points then please contact us, especially if you're traveling some distance to view. Please note that appliances and heating systems have not been tested and therefore no warranties can be given as to their good working order.