



Churchview Road, TW2

£825,000

This beautifully presented semi-detached three bedroom family home is arranged over three floors and offers generous, well-balanced accommodation.



The property benefits from two modern bathrooms, an additional downstairs W.C, off-street parking, and a delightful south west-facing garden perfect for enjoying afternoon and evening sun.

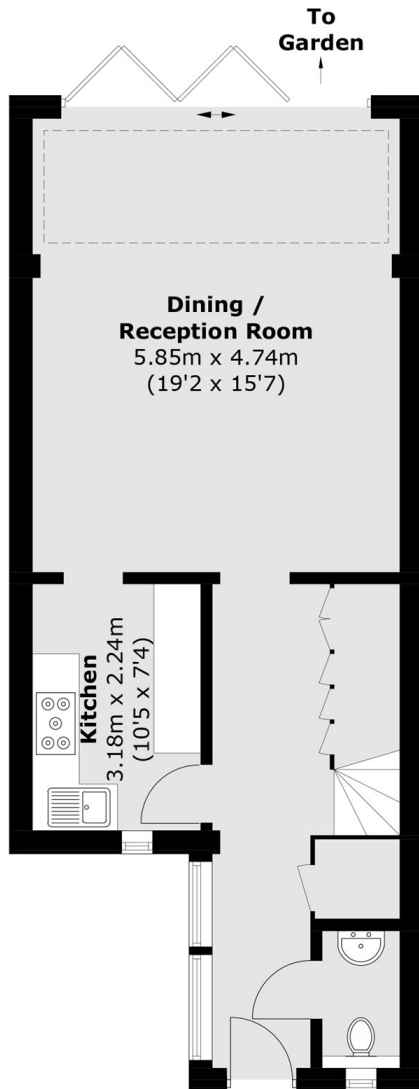
Ideally located, the home is within close proximity to several highly regarded schools, including Waldegrave Girls, Archdeacon, and St James's, among others. Twickenham Green is just a short stroll away, while commuters are well catered for with Strawberry Hill and Fulwell stations both situated less than a mile from the property.

- Off Street Parking • Three Bedrooms • South West Facing Garden •
- Modern Build • Outstanding School Catchment • Popular Location •

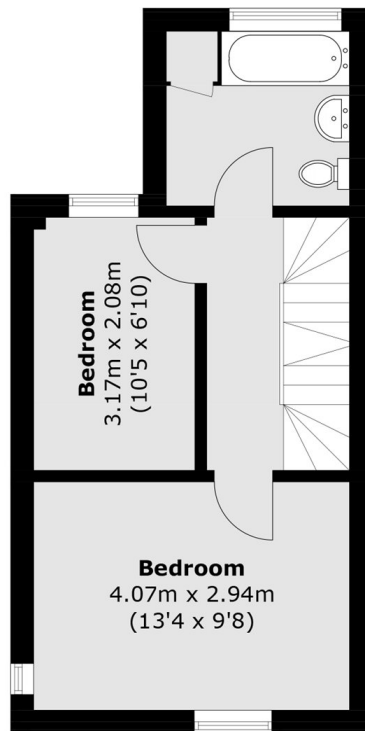


SNELLERS

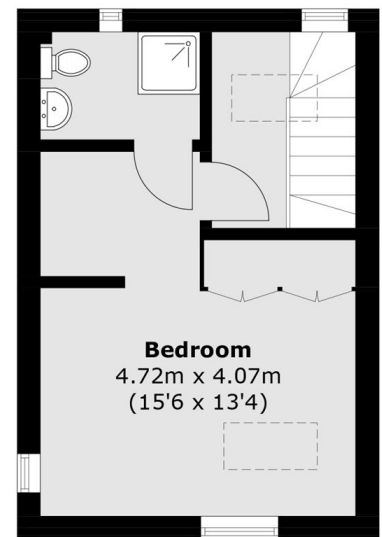
ESTATE AGENTS



Ground Floor



First Floor



Second Floor

Total area (approx.): 108.5 sq. m (1,167.9 sq. ft)

Snellers Twickenham Sales
64-66 Heath Road
Twickenham
TW1 4BX
020 8892 5555
twickenhamsales@snellers.co.uk

Energy Rating: C We aim to make our particulars both accurate and reliable. However they are not guaranteed; nor do they form part of an offer or contract. If you require clarification on any points then please contact us, especially if you're traveling some distance to view. Please note that appliances and heating systems have not been tested and therefore no warranties can be given as to their good working order