



 Holdens
ESTATE AGENTS

27 Fuchsia Way, Longridge
£246,950

 Holdens
ESTATE AGENTS



27 Fuchsia Way

Longridge, Preston

Well presented three bed quasi semi with en-suite, family bathroom, ground floor WC, lounge, modern dining kitchen, driveway parking, and close to schools, transport, and amenities. Ready to move in.

Council Tax band: C

Tenure: Freehold

EPC Energy Efficiency Rating: B

EPC Environmental Impact Rating: B

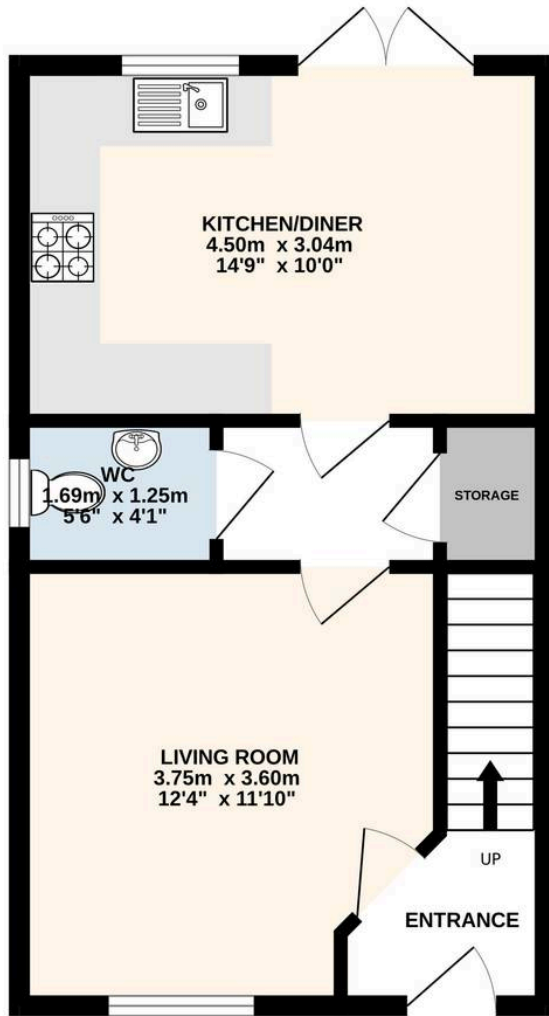
- Quasi Semi-detached property
- Lounge
- Dining kitchen with patio doors to garden
- Ground floor WC
- Three bedrooms (one with en-suite)
- Family bathroom
- Driveway parking
- Lovely, South-West facing rear garden
- Well presented
- Convenient location



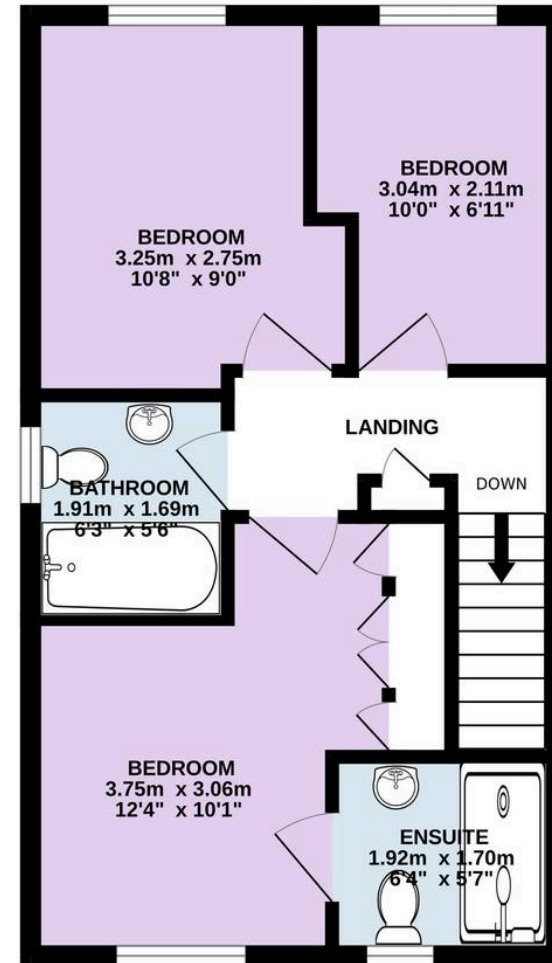




GROUND FLOOR
36.2 sq.m. (390 sq.ft.) approx.



1ST FLOOR
36.2 sq.m. (389 sq.ft.) approx.



TOTAL FLOOR AREA: 72.4 sq.m. (779 sq.ft.) approx.

Every attempt is made to ensure accuracy, however all measurements are approximate. This plan is for illustrative purposes only and is not to scale.
Made with Metropix ©2026



Holdens Longridge

66 Derby Road, Longridge – PR3 3FE

01772 233380

longridge@holdens.co.uk

www.holdens.co.uk/

Disclaimer: All information such as plans, dimensions, and details about the property's condition or suitability is provided in good faith and believed to be accurate, but should not be relied upon without independent verification. Buyers or tenants must carry out their own checks. Appliances and systems haven't been tested. It's strongly advised to get professional inspections before making any commitments. No employee or agent of Holdens Estate Agents is authorised to make promises or guarantees about the property. These details are for general guidance only and do not form part of any contract. All discussions with Holdens Estate Agents are subject to contract.