

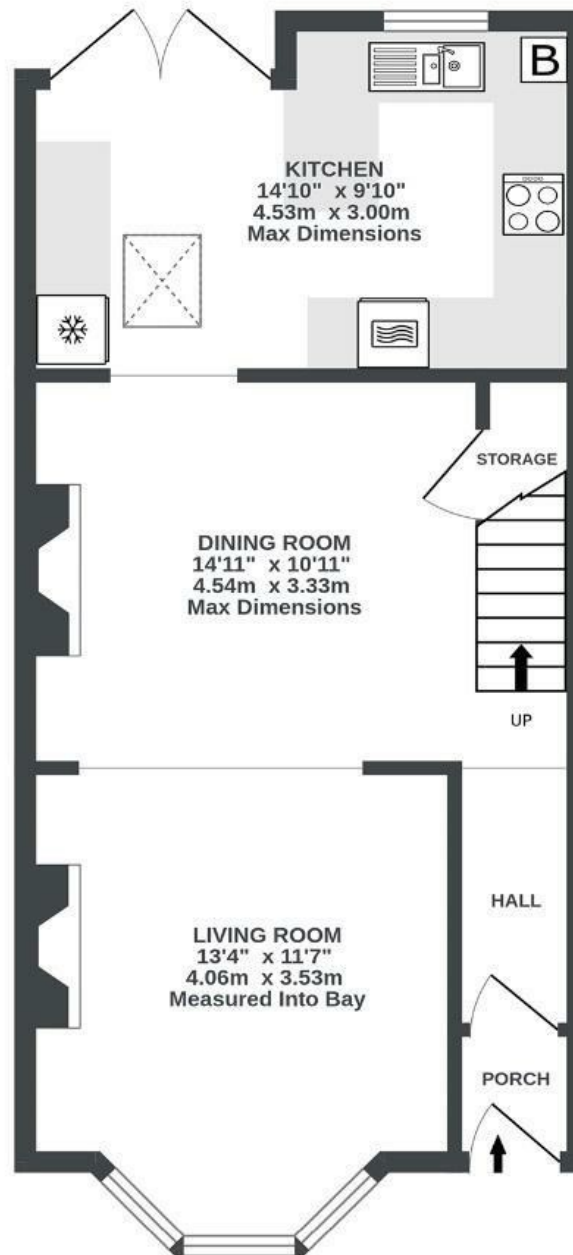
# Carlyle Road

## GREENBANK

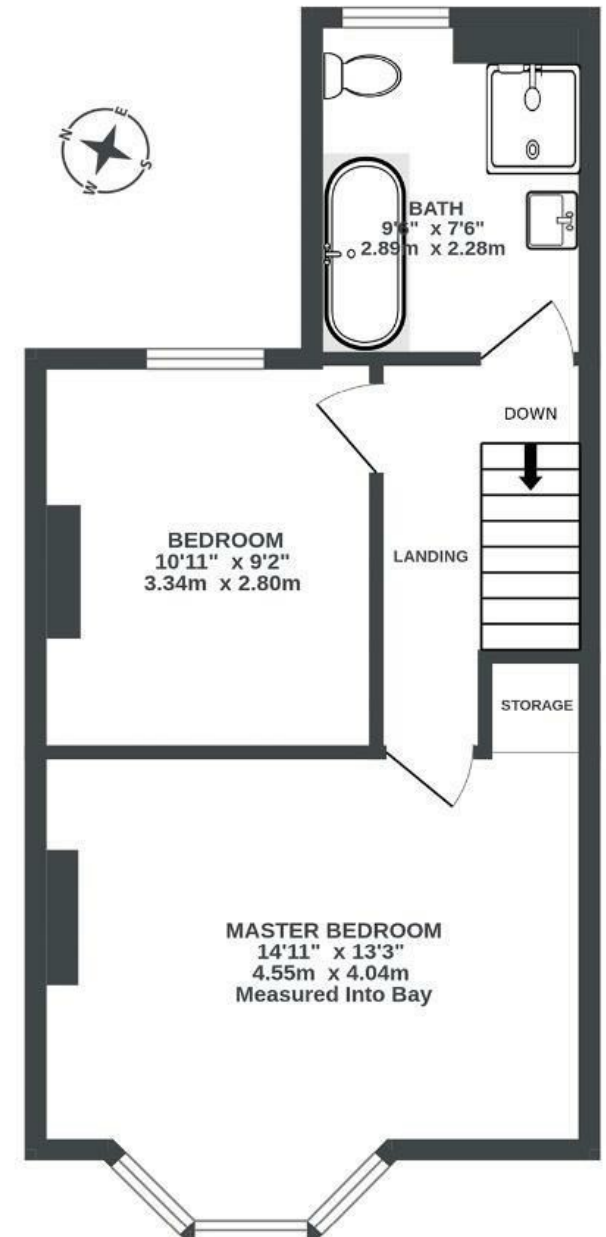
APPROXIMATE FLOOR AREA  
80.4 SQM / 865 SQFT



GROUND FLOOR  
463 sq.ft. (43.0 sq.m.) approx.



1ST FLOOR  
402 sq.ft. (37.3 sq.m.) approx.



Illustrations are for reference purposes only, measurements are approximate, not to scale.

**Boardwalk**

# Carlyle Road

GREENBANK, BRISTOL

£

£435,000



BS5 6HQ

zzz

2 Bedrooms



1 Bathrooms

*"I've absolutely loved living in this home - I'd pick it up and take it with me if I could! It's been such a joy to take care of a place with its own history and make it a cosy place to keep living in. The area is perfect for wandering in green spaces or to get to a pub or cafe in any direction, and my favourite thing is the number of walks I can take from the doorstep. Living so close to the cycle path is ideal, the neighbours are lovely, and I've felt so at home here."*

