



## John Islip Street, SW1P

£1,750,000

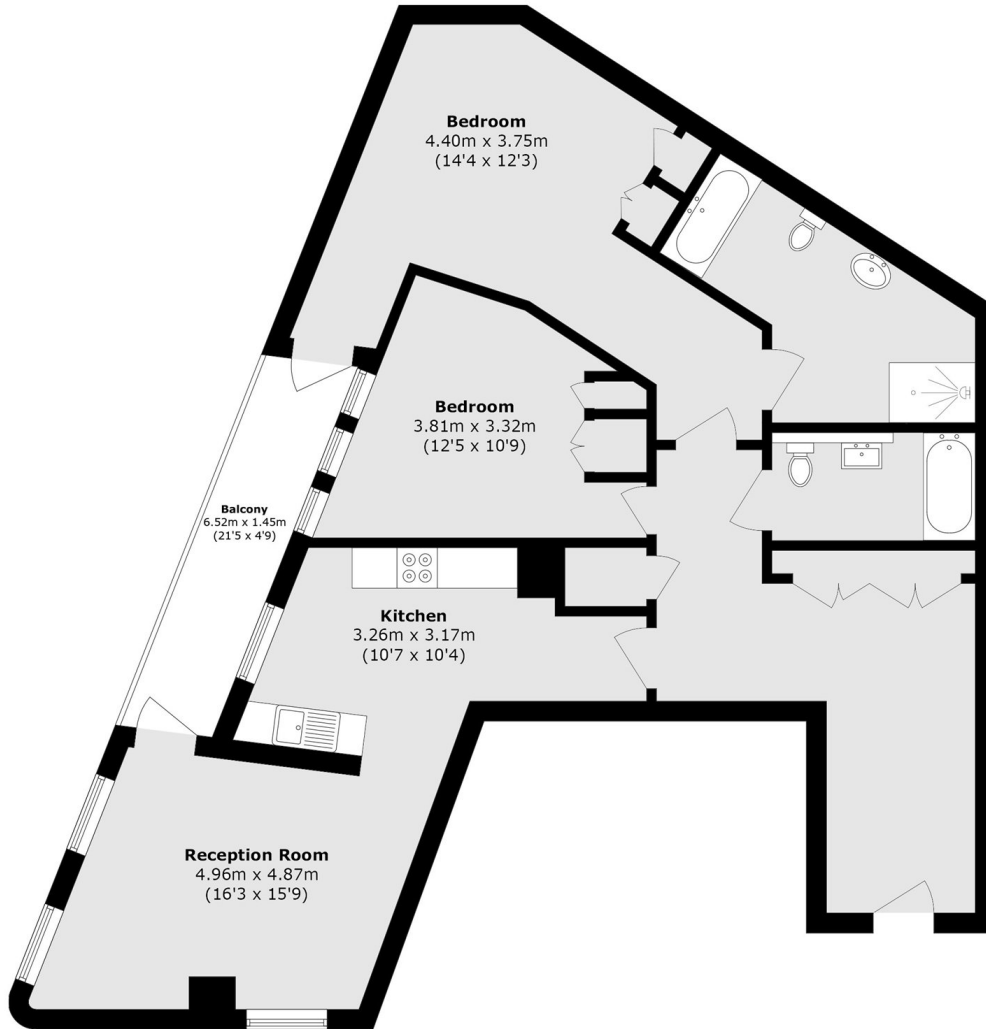
Cleland House is one of Westminster's most prestigious apartment buildings, part of the well renowned Abell and Cleland development built by Berkeley Homes. This property offers an abundance of amenities, including a state of the art gym, swimming pool, 24-hour concierge and private landscaped garden.

The Abell and Cleland development is located directly next to Burberry's London headquarters on Dean Ryle Street and within walking distance of the Houses of Parliament, Downing Street and St James's Park. Transport links close by include Westminster and Pimlico tube station.

### Features

- Gym/Swimming Pool
- 24-Hour Concierge
- Two Bedrooms
- Two Bathrooms
- Long Lease
- Balcony

# John Islip Street, London, SW1P



Total area (approx.): 118.6 sq. m (1276.6 sq. ft)