



VILLAGE ESTATES

• EST.1993 •



93 Main Road, Sidcup, Kent DA14 6ND

Tel: 0208 302 1002

www.village-estates.com

Email: sidcup@village-estates.com



NO ONWARD CHAIN

SPACIOUS DRIVEWAY

**EN-SUITE BATHROOM TO
PRINCIPLE BEDROOM**

**BEAUTIFUL GARDEN WITH
OUTBUILDING**

THREE BEDROOMS

IDEAL FAMILY HOME



**18 Mount Culver Avenue
Sidcup, DA14 5JW**

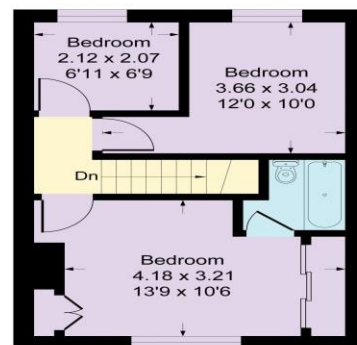
**Guide Price £425,000 -
£450,000**

THREE BEDROOM SEMI-DETACHED HOME OFFERED WITH NO ONWARD CHAIN! Village Estates are delighted to present this well-presented three-bedroom family home. This stunning property boasts a generous family living room, modern kitchen, and extended dining area, providing excellent space for entertaining and everyday living. The ground floor benefits from a modern shower room, ready for the next owners to utilise. Upstairs, there are three bedrooms, with the master bedroom benefiting from its own en-suite bathroom, adding further convenience. Externally, the property offers a large driveway providing parking for multiple vehicles, as well as a beautifully maintained rear garden, carefully looked after by the current owner. The property also benefits from an outbuilding to the rear of the garden, offering a variety of potential uses. Call now to arrange your appointment.



Ground Floor

Mount Culver Avenue, DA14
Approximate Gross Internal Area
80.5 sq m / 867 sq ft



First Floor

CONSUMER PROTECTION FROM UNFAIR TRADING REGULATIONS 2008

Please note that any services, heating system or appliances have not been tested, and no warranty can be given or implied as to their working order. You are advised to obtain verification from your solicitor or surveyor. References to the tenure of a property are based on information supplied by the seller. We have not had sight of the title documents and a buyer is advised to obtain verification from their solicitor. Items shown in photographs are not included unless specifically mentioned within the sales particulars, but may be available by separate negotiation. Whilst every attempt has been made to ensure the accuracy of the floor plan contained here, measurements of doors, windows, rooms and any other items are approximate and no responsibility is taken for any error, omission, or mis-statement. We advise you to book an appointment to view before embarking on any journey to see a property, and check its availability. The accuracy of these details are not guaranteed and they do not form part of the contract.