



## Highbury New Park, N5

£1,900 Per calendar month

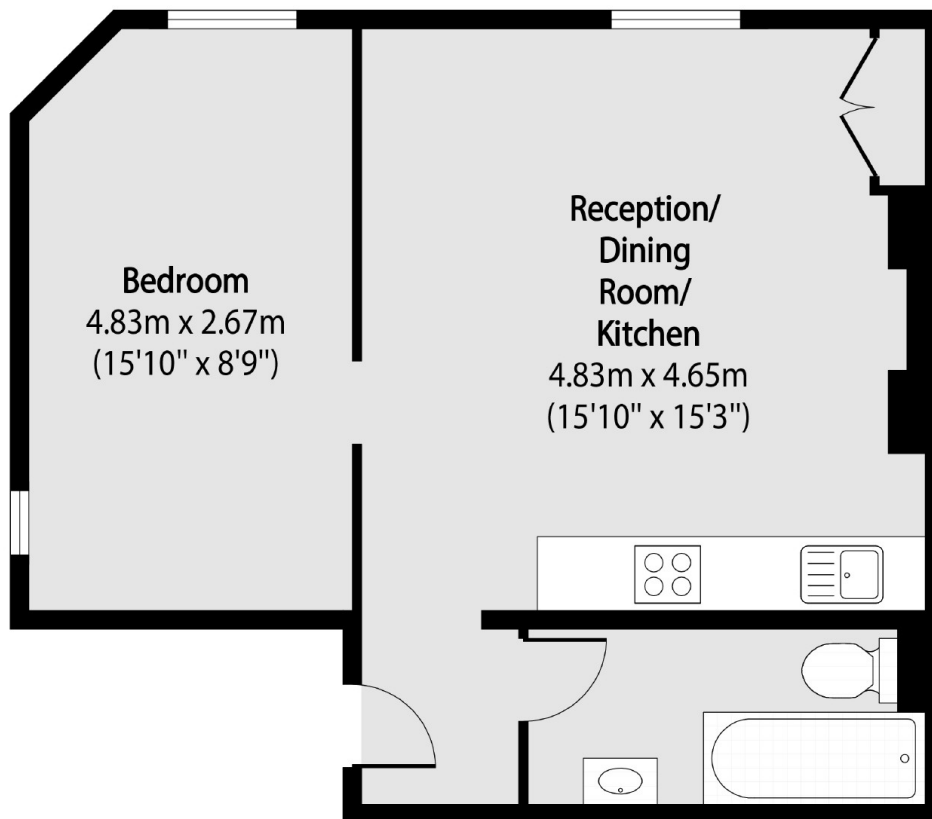
A one bedroom apartment in a period conversion. This apartment has an open plan living room with wood flooring, large windows and high ceilings and a spacious bedroom.

The property is under half a mile from Canonbury overground station and Highbury Barn's many boutique shops and cafes. Highbury & Islington station and the shops and restaurants of Upper street are also within easy reach.

### Features

- One Bedroom
- Period Conversion
- High Ceilings
- Open Plan Living
- Great Location
- Large Windows

# Highbury New Park, London, N5



Total area (approx): 42.64 sq m (459 sq. ft)