



LANG TOWN  
& COUNTRY

Flat 1, The Mansion House, 5, Royal William Road, Stonehouse, Plymouth, Devon, PL1 3RQ



## Offers Over £270,000



Lang Town and Country are delighted to introduce this elegant two-bedroom ground floor apartment set within the distinguished Mansion House on Royal William Road, one of the most desirable waterfront locations in Plymouth. Perfectly positioned to capture tranquil water views, this stylish residence offers a rare blend of historical charm, modern comfort, and prime coastal living. With two allocated parking spaces, it ensures both convenience and exclusivity.

As you step into the property, you are welcomed by a well-proportioned hallway that flows seamlessly into the heart of the home—a light-filled lounge and dining area. Framed by expansive windows, this open-plan space is bathed in natural light throughout the day and offers ample room for both relaxation and entertaining.

The adjacent kitchen is thoughtfully designed, featuring sleek cabinetry and fitted appliances, making it a perfect setting for cooking or hosting guests.

The primary bedroom is generously sized and filled with natural light, enhanced by a full wall of built-in wardrobes that provide abundant storage. It also boasts a private en-suite shower room, offering a touch of luxury and privacy. The second bedroom, also bright and versatile, is ideal as a guest room, study, or creative space.

A stylish family bathroom, completes the interior, providing both function and comfort.

Located within easy reach of the vibrant Royal William Yard, this apartment enjoys proximity to a host of waterfront cafés, independent restaurants, and scenic walking routes. Whether you're seeking a peaceful coastal lifestyle or easy access to the city's cultural and social offerings, this property delivers on all fronts.

Ideal for professionals, downsizers, or those in search of a refined weekend retreat, this beautiful apartment at Mansion House offers timeless charm in a truly exceptional location. Being offered to the market with vacant possession and no onward chain.

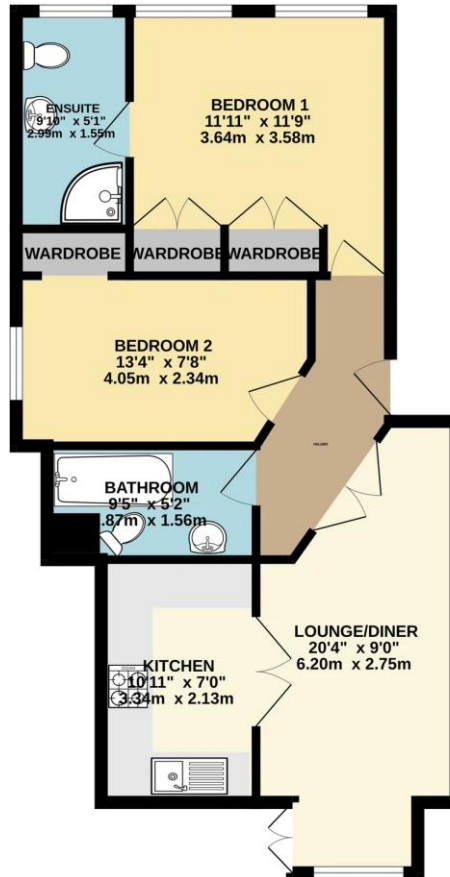
We understand the apartment is held on a sharing freehold with each flat/apartment owns a share of the lease. There are 971 years remaining and the service charges of £3,448.65 per year from Oct 24 - Sep 25. The above information is provided in good faith although we would recommend that prospective purchasers consult their own solicitor for formal verification.

Agent's Note: Please note the lease stipulates that pets are not allowed.



To view this property call Lang Town & Country Estate Agents on [01752 200909](tel:01752200909).





TOTAL FLOOR AREA: 621 sq.ft. (57.7 sq.m.) approx.  
 Whilst every attempt has been made to ensure the accuracy of the floorplan contained here, measurements of doors, windows, rooms and any other items are approximate and no responsibility is taken for any error, omission or mis-statement. This plan is for illustrative purposes only and should be used as such by any prospective purchaser. The services, systems and appliances shown have not been tested and no guarantee as to their operability or efficiency can be given.  
 Made with Metropix ©2025



Lang Town & Country  
 6 Mannamead Road  
 Mutley  
 Plymouth  
 PL4 7AA  
 Email: [waterside@langtownandcountry.com](mailto:waterside@langtownandcountry.com)  
 Tel: 01752 200909

Lang Town & Country endeavour to ensure the accuracy of property details produced and displayed, we have not tested any apparatus, equipment, fixtures, fittings or services and so cannot verify that they are connected, in working order or fit for purpose. A buyer must check the availability of any property and make an appointment to view before embarking on any journey to see a property.

