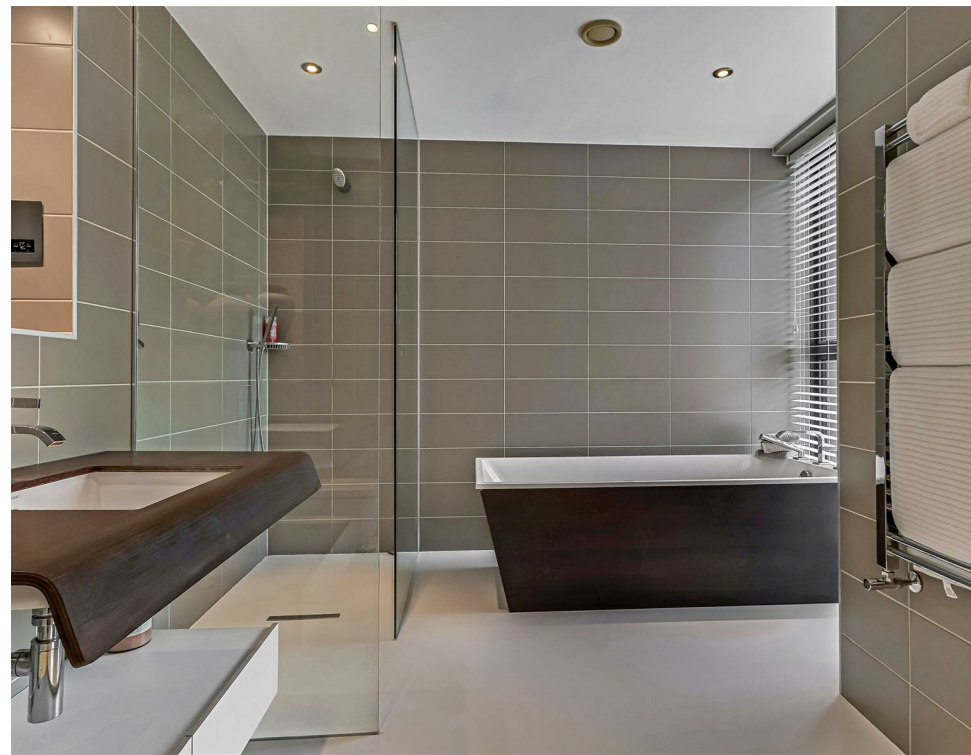




MOUNT GRACE DRIVE,  
EVENING HILL











## DETAILS

A striking contemporary residence of exceptional quality, set discreetly back from the road and enjoying elevated harbour views, beautifully landscaped south-westerly gardens and superb leisure facilities.

Occupying a prime position within one of the South Coast's most sought-after enclaves, this exceptional home combines architectural flair with thoughtfully designed living spaces arranged over multiple levels.

The ground floor is dedicated to leisure and practicality, featuring a superb indoor swimming pool complex complete with gym, changing room and shower facilities, alongside a study area and integral double garage. The principal living accommodation is arranged across the upper floors, where a beautifully appointed kitchen/breakfast room with walk-in pantry flows seamlessly into an informal family area, opening onto a generous sun terrace. Three well-proportioned bedroom suites, each with refined en suite facilities, provide luxurious accommodation, while the upper level reveals an impressive additional reception space with far-reaching harbour glimpses and access to a sun terrace.

Set behind secure electronic gates, the property is approached via a spacious driveway with additional covered parking. The surrounding gardens are mature, private and meticulously maintained, enjoying a desirable south-westerly aspect ideal for outdoor entertaining.

Mount Grace Drive is a tree-lined cul-de-sac, perfectly positioned moments from the shoreline of Poole Harbour, renowned for its sailing waters, marinas and vibrant coastal lifestyle. Nearby Lilliput offers a charming selection of boutique shops, cafés and everyday amenities, while the celebrated beaches of Sandbanks and the village atmosphere of Canford Cliffs are all within easy reach, making this a truly outstanding coastal residence.

## AT A GLANCE

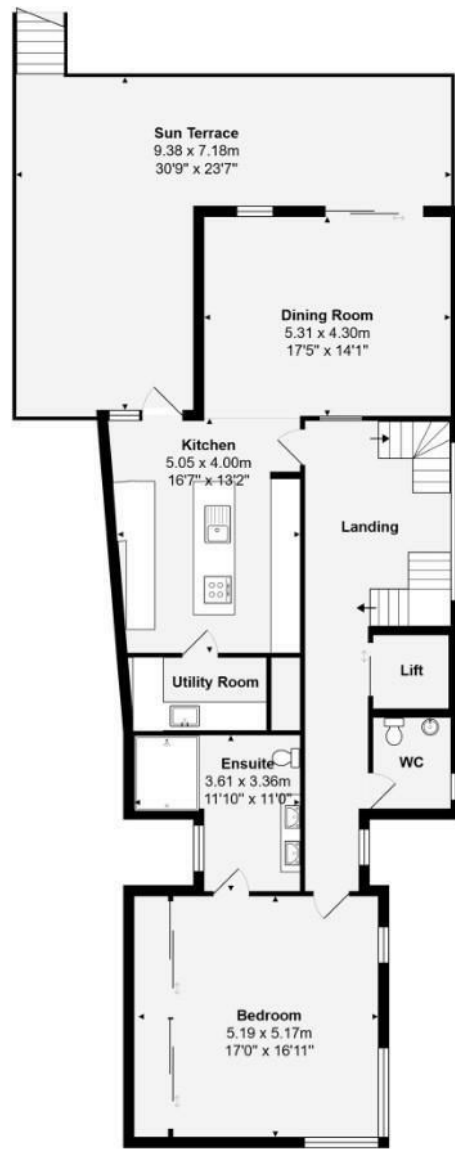
Guide price:	£3,000,000
Tenure:	Freehold
Stamp Duty:	£303,750 Main Home
Local Authority:	BCP Council
Council Tax:	£4,871.16 Band H

## KEY FEATURES

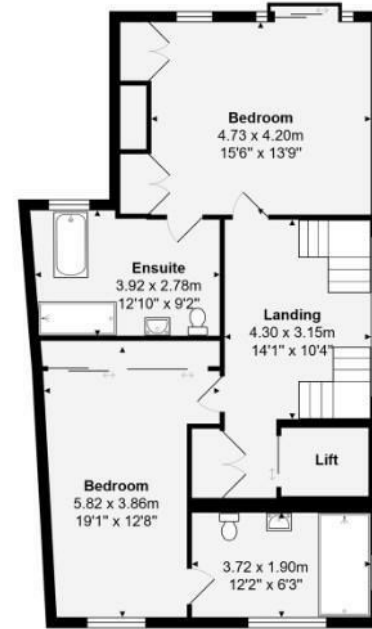
- Three luxurious double bedroom suites
- Private indoor swimming pool complex with gym and changing facilities
- Impressive kitchen/breakfast room with adjoining family/dining area
- Elegant formal living room with elevated glimpses over Poole Harbour
- Lift access to all floors
- Integral double garage and additional covered parking
- South-west facing landscaped gardens with terraces and balconies
- Underfloor heating throughout



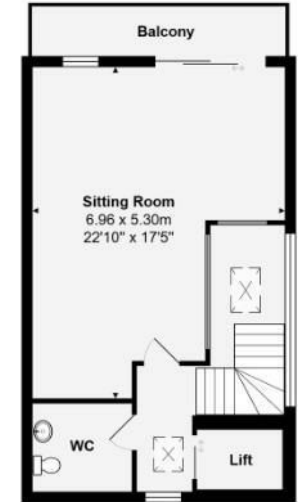
GROUND FLOOR



FIRST FLOOR



SECOND FLOOR



THIRD FLOOR



Total Area: 382.5 m<sup>2</sup> ... 4117 ft<sup>2</sup> (excluding sun terrace, balcony)

All measurements are approximate and for display purposes only

# LLOYDS

Important notice Lloyds Property Sales Ltd, its clients and any joint agents give notice that 1: They are not authorised to make or give any representations or warranties in relation to the property either here or elsewhere, either on their own behalf or on behalf of their client otherwise. They assume no responsibility for any statement that may be made in these particulars. These particulars do not form part of any offer or contract and must not be relied upon as statements or representations of fact. 2: Any areas, measurements or distances are approximate. The text, photographs, council tax charges, stamp duty charges and plans are for guidance only and are not necessarily comprehensive. It should not be assumed that the property has all necessary planning, building regulation or other consents and Lloyds Property Sales have not tested any services, equipment or facilities. Purchasers must satisfy themselves by inspection or otherwise.