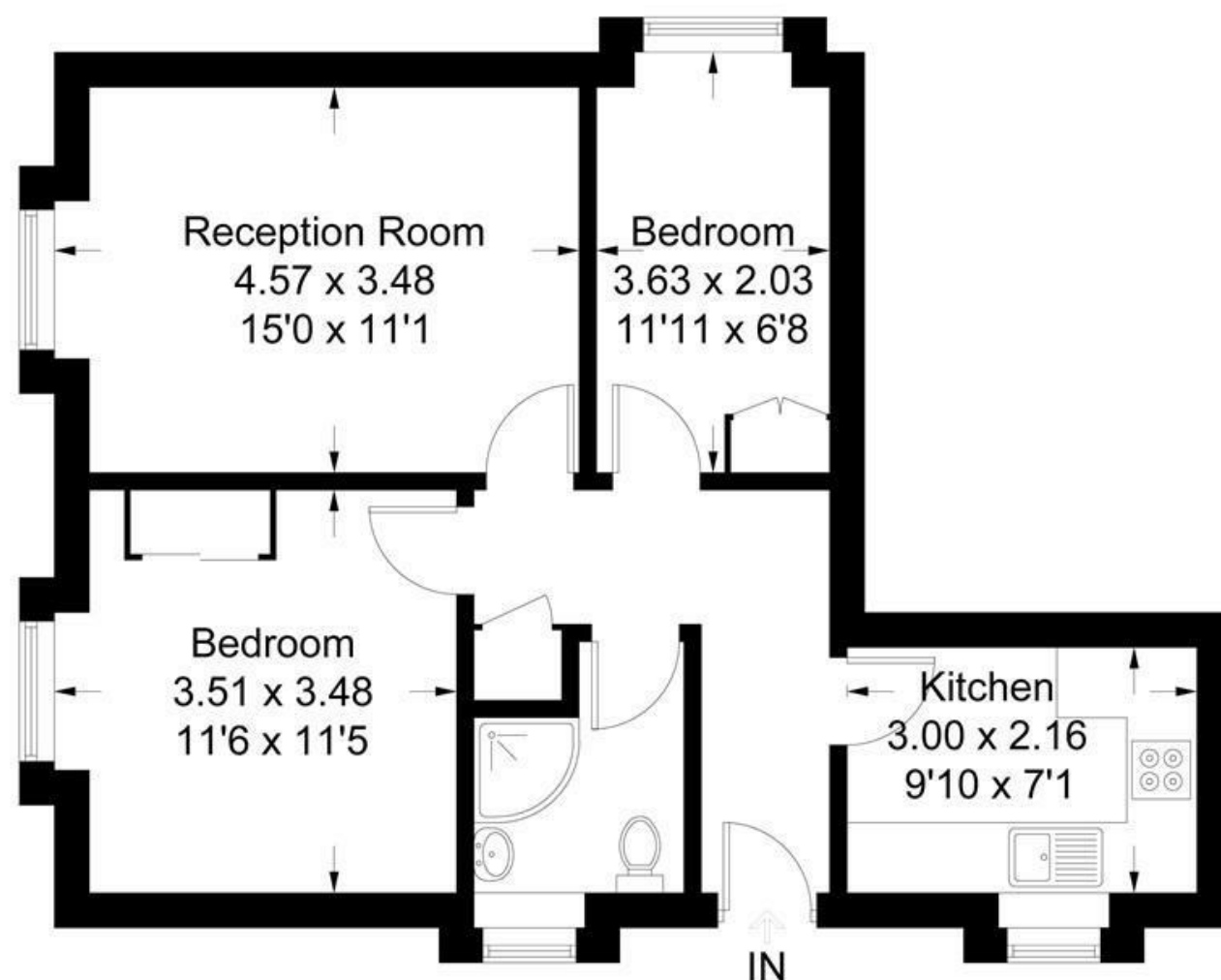


Western Avenue, W5

Approximate Gross Internal Area = 53.4 sq m / 575 sq ft



Ground Floor



FLAT

FEATURES

Western Avenue W5
£1,750 PCM

Measured in accordance with RICS Code of Measuring Practice. To be used for identification and guidance purposes only.
Whilst every care is taken in the preparation of this plan, please check all dimensions, shapes and compass bearings before making any decisions reliant upon them.
www.london58.com © 2020 hello@london58.com

FLAT

Western Avenue W5

£1,750 PCM

Set within a private development, just moments from Hanger Lane Tube (Central Line) and Park Royal (Piccadilly Line), this two bedroom purpose built apartment has been updated to a high standard and is well presented throughout.

The property has a large living room with space for a dining area, two good size bedrooms, a contemporary kitchen with plenty of storage and a modern bathroom. Allocated parking can be made available by separate negotiation for an additional £100.00 pm

