



Price
£240,000

Freehold

2x  1x  1x 

**Cheshire Road,
Maidstone, Kent ME15**

OVER 60?

Secure this property
for up to **59% less!**

Wards
Helping you move forwards



Main features

- Chain free
- Garage and driveway
- Cul-de-sac location
- Stunning rear garden with room to entertain
- Spacious throughout and plenty of space to extend subject to planning permission

Accommodation

GROUND FLOOR

Hallway

Lounge/Diner: 19'3 x 11'3 (5.87m x 3.43m)

Kitchen: 9'6 x 7'4 (2.90m x 2.24m)

FIRST FLOOR

Landing

Bedroom 1: 11'3 x 10'1 (3.43m x 3.08m)

Bedroom 2: 14'1 x 9'0 (4.30m x 2.75m)

Bathroom

OUTSIDE

Front Garden

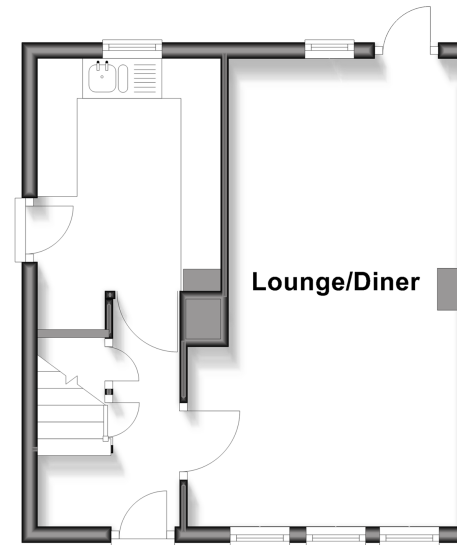
Driveway

Garage

Rear Garden

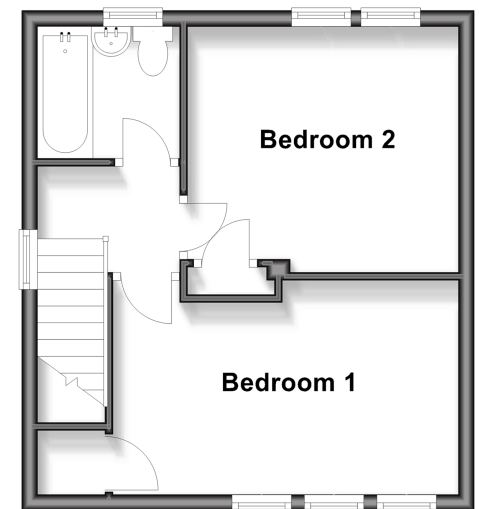
Ground Floor

Approx. 31.2 sq. metres (336.2 sq. feet)



First Floor

Approx. 31.2 sq. metres (335.6 sq. feet)



Call Maidstone - 01622 683737 ■ wardsofkent.co.uk

■ Legal advice should be taken to verify fixtures/fittings, planning, alterations and/or lease details
 ■ Through a Homewise Home For Life Plan people aged 60+ can secure this property for up to 50% less, by purchasing a Lifetime Lease.

■ Appliances & services are untested, dimensions are approximate and floor plans are not to scale



13159098/20250917/JS/TB