

Biscayne Avenue, E14

£1,038 Per week

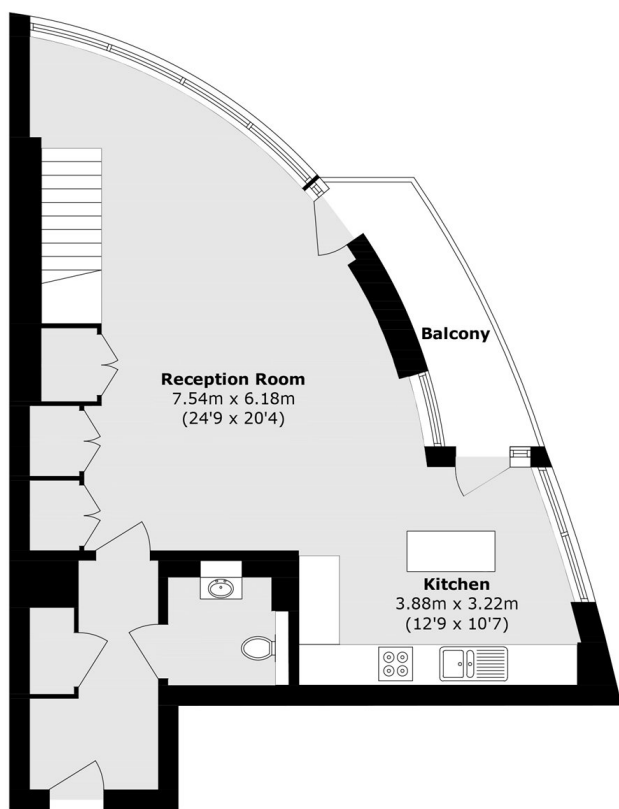
A stunning three-bedroom duplex, two-bathroom apartment in Charrington Tower, featuring a sleek open-plan layout, integrated appliances, wood flooring and floor-to-ceiling windows with breathtaking views of the River Thames and The O2. The principal bedroom benefits from an en suite and fitted storage, while a private balcony, 24-hour concierge and resident facilities enhance modern city living.

Ideally located close to Blackwall DLR, plus Canary Wharf's Jubilee & Elizabeth Line stations for excellent transport links into the City. On-site facilities include a 24-hour concierge, indoor pool, gym, spa and exclusive access to the "Sky Lounge."

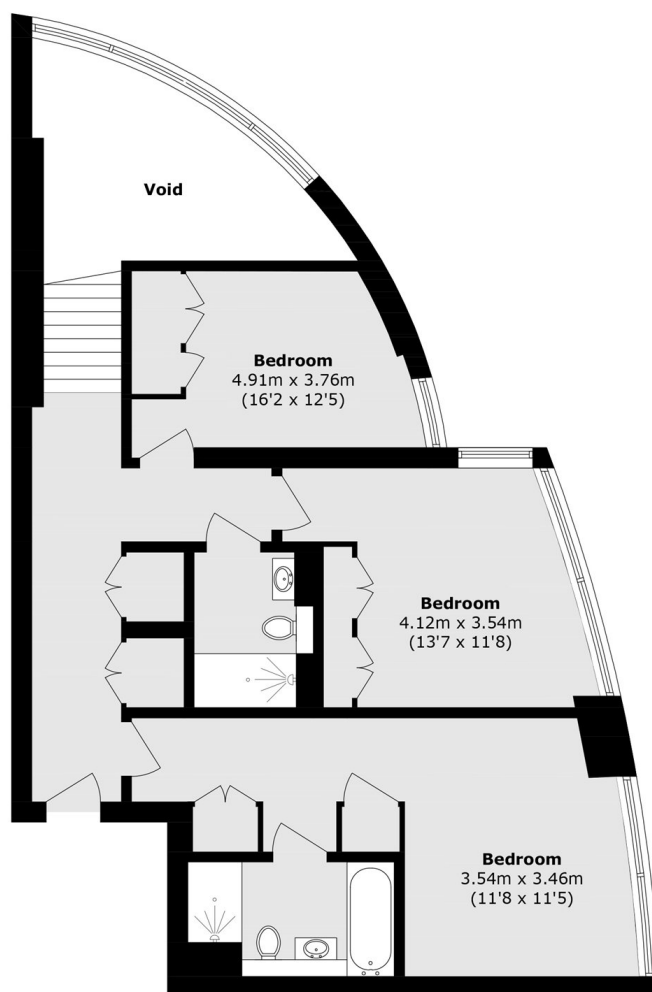
Features

- High Floor Duplex Listing
- Three Double Bedrooms
- Floor-To-Ceiling Windows
- Two Private Balconies
- Direct River & O2 Views
- On-Site Resident Facilities

Biscayne Avenue, London, E14



Fifteenth Floor



Sixteenth Floor

Total area (approx.): 128.4 sq. m (1,382.1 sq. ft)
Balcony (approx.): 5.5 sq. m (59.2 sq. ft)
(excluding Void)