

ASHLONE ROAD





Ashlone Road, SW15

Situated on the sought-after Ashlone Road in West Putney, this attractive Victorian terraced house offers well-balanced family accommodation just moments from the River Thames.

Arranged over three floors, the house comprises three well-proportioned bedrooms, two bathrooms, and a semi open-plan reception room connecting to the dining area and bright sun room beyond, providing good natural light throughout the living space.

To the rear is a private garden with a combination of paved terrace and lawn, together with a useful garden shed providing additional storage.

Ashlone Road enjoys an exceptional location close to the Thames Path, offering immediate access to riverside walks, cafés and rowing clubs, whilst the green open spaces of Leader's Gardens, with its popular tennis courts, café and riverside parkland, sit conveniently at the end of the road. Barnes Common is also within easy reach, providing further expansive green space ideal for walking, running and outdoor recreation.

The amenities of Putney High Street are approximately a 10-minute walk away, with an excellent selection of shops, supermarkets, cafés and restaurants close at hand. For commuters, excellent transport links are available nearby, with Putney Bridge Underground Station (District Line) providing straightforward access into Central London.







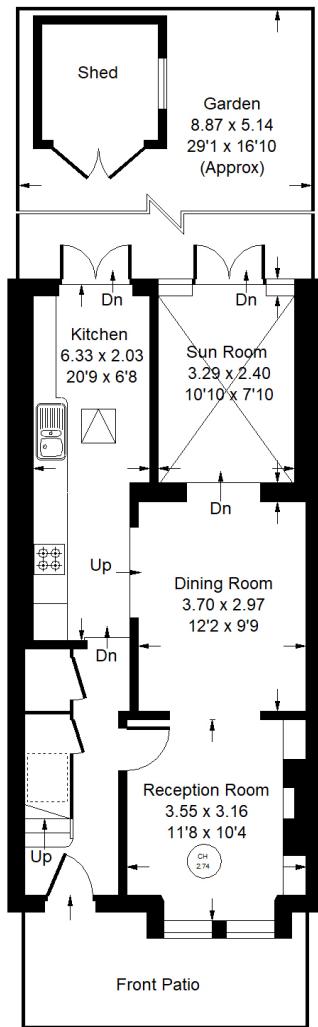
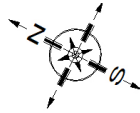




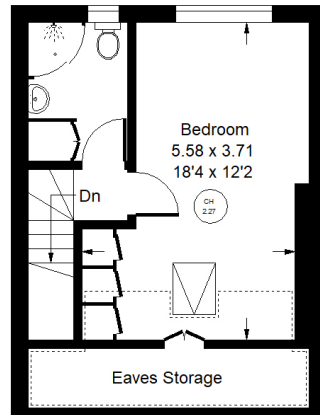




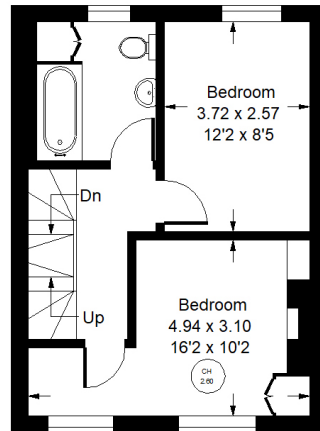
Approx. Gross Internal Area = 115.1 sq m / 1239 sq ft
 Eaves Storage = 5.2 sq m / 56 sq ft
 Total = 120.3 sq m / 1295 sq ft



Ground Floor



Second Floor



First Floor

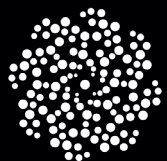
= Reduced headroom below 1.5 m / 5'0"



Ashlone Road, SW15

Local Authority - **London Borough Wandsworth**

- Three well-proportioned double bedrooms
- Two bathrooms
- Reception room connecting to dining area and bright sun room
- Attractive Victorian terraced house
- Private rear garden with paved terrace and lawn
- Moments from the River Thames and Thames Path
- Close to Leader's Gardens, tennis courts and riverside parkland
- Conveniently located for Putney High Street and Putney Bridge Underground Station



MOUNTGRANGE
PRIVATE OFFICE

27 Kensington Park Road, London W11 2EU

liz@mountgrangeheritage.co.uk

teresa@mountgrangeheritage.co.uk

julia@mountgrangeheritage.co.uk