

FLETCHERS

ESTATE AGENTS



Oxford Gardens, W4

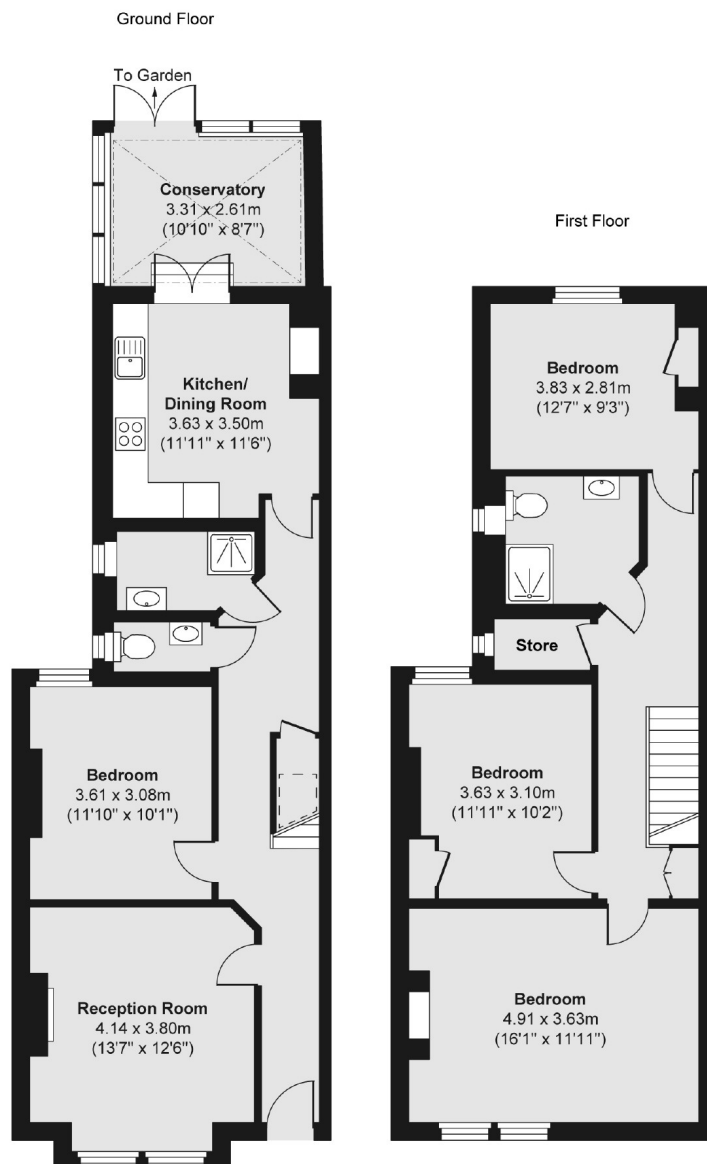
£853 Per week (£3,700 pcm)

Oxford Gardens is a quiet cul-de-sac, 0.4 miles from Gunnersbury Station (District Line and Overground) and 0.5 miles from Chiswick High Road.

- Four Bedrooms • Two Bathrooms • Separate Kitchen • Conservatory • Private Garden • Gunnersbury Station •

FLETCHERS

ESTATE AGENTS



Total area (approx.) 127.72 sq. m (1,375 sq. ft)

Fletchers Chiswick High Road Lettings
86 Chiswick High Road, Chiswick, London, W4 1SY
020 8742 4100
chiswicklettings@fletcherstates.com

Energy Rating: D. We aim to make our particulars both accurate and reliable. However they are not guaranteed; nor do they form part of an offer or contract. If you require clarification on any points then please contact us, especially if you're traveling some distance to view. Please note that appliances and heating systems have not been tested and therefore no warranties can be given as to their good working order.