







- Top Floor Maisonette
- Two Bedrooms
- Sought-After Area
- Transport Links
- Viewing Recommended
- Well-Presented
- Leasehold
- Local Facilities
- Council Tax Band: A
- Call For More Information







\*\* Video Tour on our YouTube Channel | <https://youtu.be/Klg5Xg2-cdA>  
\*\*

Jan Forster Estates are delighted to welcome to the market this beautifully presented two-bedroom, top-floor maisonette, over two floors. Superbly positioned on Front Street in the heart of ever-desirable Tynemouth Village.

The accommodation briefly comprises: entrance and staircase to the second floor, a private hallway, a bright and spacious lounge, and a well-appointed kitchen complete with fitted wall and floor units. To the third floor, you will find two generously sized bedrooms along with a family bathroom WC featuring a modern four-piece suite. Further benefits include gas central heating and double glazing throughout and there is also a well-proportioned loft, accessible via a drop-down ladder, offering further storage options, alongside a useful walk-in cupboard off the hallway and extra storage beneath the stairs.

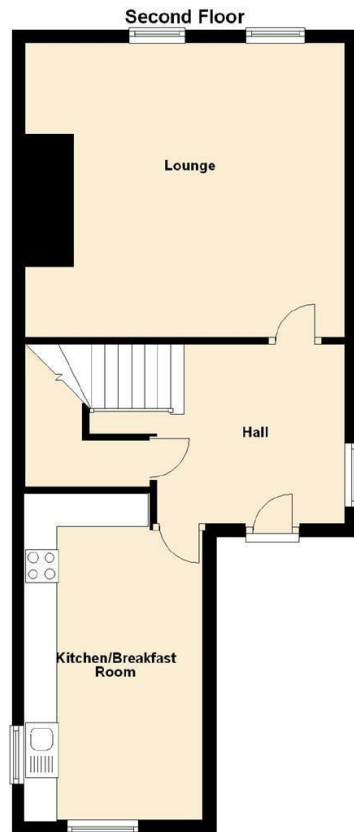
Enjoying an enviable location, this charming home offers picturesque views and a refreshing coastal atmosphere, with a wealth of scenic walking routes right on the doorstep. Just moments from the iconic Tynemouth Priory, the property is surrounded by an inspiring blend of natural beauty and rich local history. A short stroll leads to an excellent selection of independent shops, bars, and restaurants, while convenient public transport links - including the nearby Metro - provide easy access to Newcastle City Centre and beyond. Families will also appreciate the close proximity to a number of highly regarded schools, making this a truly exceptional place to call home.

For more information or to arrange a viewing, please contact our property experts on 0191 236 2070.

#### Tenure

The agent understands the property to be leasehold. This should be verified by a licensed legal representative.

Council Tax Band: A

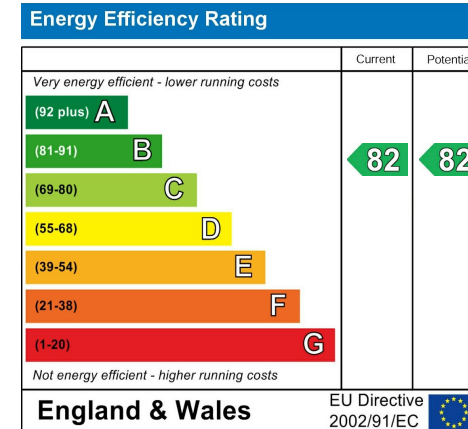


Lounge 20'5" x 14'9" (6.23 x 4.51)

Kitchen 15'8" x 8'4" (4.80 x 2.56)

Bedroom One 11'7" x 17'7" (3.55 x 5.37)

Bedroom Two 11'8" x 9'0" (3.58 x 2.76)



## The difference between house and home

You may download, store and use the material for your own personal use and research. You may not republish, retransmit, redistribute or otherwise make the material available to any party or make the same available on any website, online service or bulletin board of your own or of any other party or make the same available in hard copy or in any other media without the website owner's express prior written consent. The website owner's copyright must remain on all reproductions of material taken from this website.



[www.janforsterestates.com](http://www.janforsterestates.com)

**Contact Us: 0191 236 2070**

