



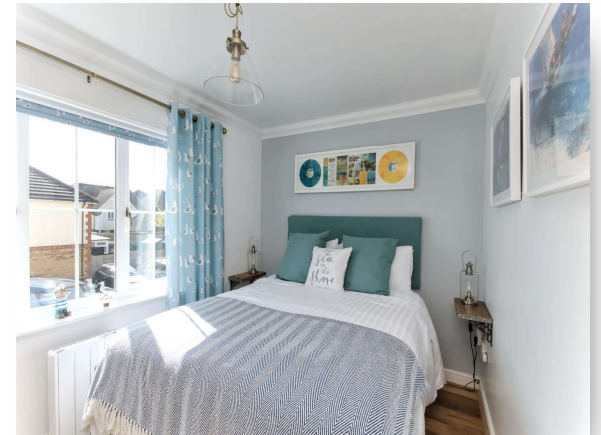
Pacific Heights South Golden Gate Way, Eastbourne BN23 5PU

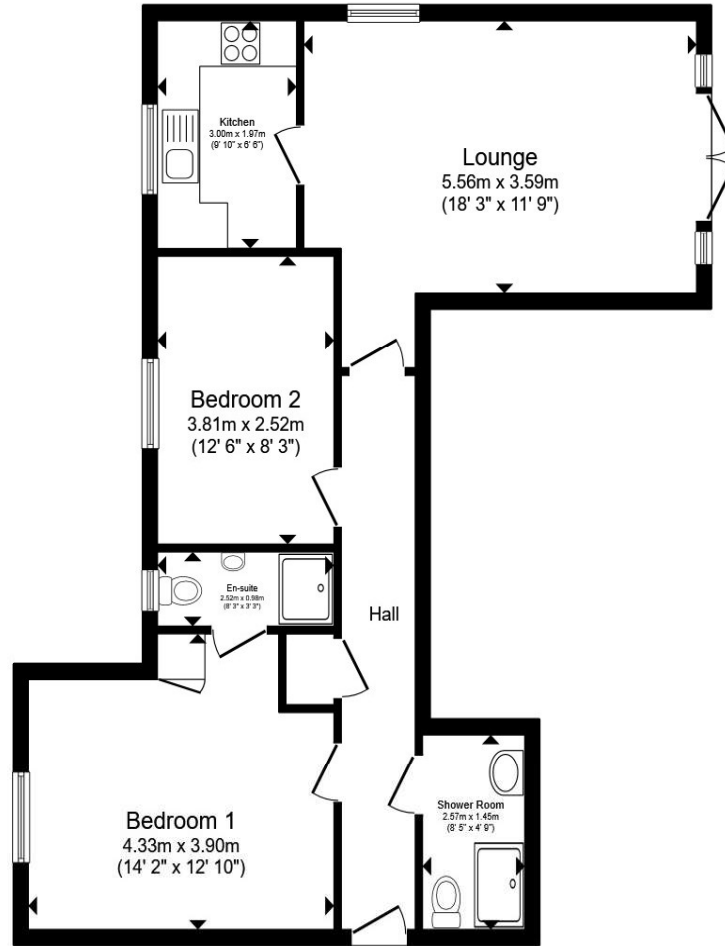


welcome to

Pacific Heights South Golden Gate Way, Eastbourne

Immaculately presented two-bedroom first floor harbour apartment with stunning inner harbour views, en-suite, modern fitted kitchen and allocated undercroft parking. Located within the sought-after Sovereign Harbour, within walking distance to cafes, restaurants and local amenities.





Entrance Hall

Lounge

18' 3" x 11' 9" (5.56m x 3.58m)

Kitchen

9' 10" x 6' 6" (3.00m x 1.98m)

Bedroom One

14' 2" x 12' 10" (4.32m x 3.91m)

En-Suite

8' 3" x 3' 3" (2.51m x 0.99m)

Bedroom Two

12' 6" x 8' 3" (3.81m x 2.51m)

Shower Room

8' 5" x 4' 9" (2.57m x 1.45m)

Parking

Total floor area 68.1 m² (733 sq.ft.) approx

This floor plan is for illustrative purposes only. It is not drawn to scale. Any measurements, floor areas (including any total floor area), openings and orientation are approximate. No details are guaranteed, they cannot be relied upon for any purpose and they do not form part of any agreement. No liability is taken for any error, omission or misstatement. A party must rely upon its own inspection(s). Powered by www.propertybox.io



welcome to

Pacific Heights South Golden Gate Way, Eastbourne

- Two Bedroom Apartment - Extended lease
- First Floor
- Immaculately Presented
- Stunning Harbour Views
- En-Suite to Master

Tenure: Leasehold EPC Rating: Awaiting

Council Tax Band: D Service Charge: Ask Agent

Ground Rent: £0

This is a Leasehold property. We are awaiting further details about the Term of the lease. For further information please contact the branch. Please note additional fees could be incurred for items such as Leasehold packs.

£240,000



Please note the marker reflects the
postcode not the actual property

view this property online fox-and-sons.co.uk/Property/LGL111941



Property Ref:
LGL111941 - 0002

1. MONEY LAUNDERING REGULATIONS Intending purchasers will be asked to produce identification documentation at a later stage and we would ask for your co-operation in order that there is no delay in agreeing the sale. 2. These particulars do not constitute part or all of an offer or contract. 3. The measurements indicated are supplied for guidance only and as such must be considered incorrect. Potential buyers are advised to recheck measurements before committing to any expense. 4. We have not tested any apparatus, equipment, fixtures or services and it is in the buyers interest to check the working condition of any appliances. 5. Where an EPC, or a Home Report (Scotland only) is held for this property, it is available for inspection at the branch by appointment. If you require a printed version of a Home Report, you will need to pay a reasonable production charge reflecting printing and other costs. 6. We are not able to offer an opinion either written or verbal on the content of these reports and this must be obtained from your legal representative. 7. Whilst we take care in preparing these reports, a buyer should ensure that his/her legal representative confirms as soon as possible all matters relating to title including the extent and boundaries of the property and other important matters before exchange of contracts.

Fox & Sons is a trading name of Sequence (UK) Limited which is registered in England and Wales under company number 4268443, Registered Office is Cumbria House, 16-20 Hockliffe Street, Leighton Buzzard, Bedfordshire, LU7 1GN. VAT Registration Number is 500 2481 05.


fox & sons



01323 735561



langney@fox-and-sons.co.uk



20 Winston Crescent, Langney, EASTBOURNE,
East Sussex, BN23 6NL



fox-and-sons.co.uk