



## Penthouse, Apartment 20

La Falaise De Fremont



## Penthouse, Apartment 20, La Falaise De Fremont, Bonne Nuit Bay, St John, JE3 4DD

Nestled in the prestigious La Falaise de Fremont, this exceptional penthouse apartment offers breathtaking, uninterrupted views over Bonne Nuit Bay and the surrounding coastal landscapes. Perfectly positioned for those seeking a tranquil yet convenient lifestyle, the property is within easy reach of local amenities in St John's Village, including M&S, a bakery, a butcher, chemist, and there are excellent bus links to town. Combining unparalleled vistas with an exclusive location, this apartment is a rare find.

The spacious interior spans approximately 1,400 square feet, designed to maximize natural light and stunning views. A welcoming entrance hall sets the tone, leading to an open-plan sitting room, dining area, and a kitchen/breakfast room, each room with beautiful views and opening onto a large balcony ideal for entertaining or relaxing. The master bedroom impresses with vaulted ceilings, an ensuite bathroom, and a private balcony with sea views, while two additional bedrooms—one currently used as a study—each have access to a balcony. The property also includes a house bathroom, a separate WC, and a utility room for added convenience.

Externally, residents can enjoy a beautifully maintained communal patio and barbecue area, perfect for summer gatherings against a backdrop of stunning coastal scenery. Additional amenities include a lift, garage parking for three cars, plus ample exterior gated visitor parking. This apartment offers a blend of comfort, elegance, and nature's beauty, presenting a perfect opportunity to own your dream seaside home.



3



2



2

Parish: St John

Qualification: Qualified

Tenure: Share Transfer

Price £1,295,000



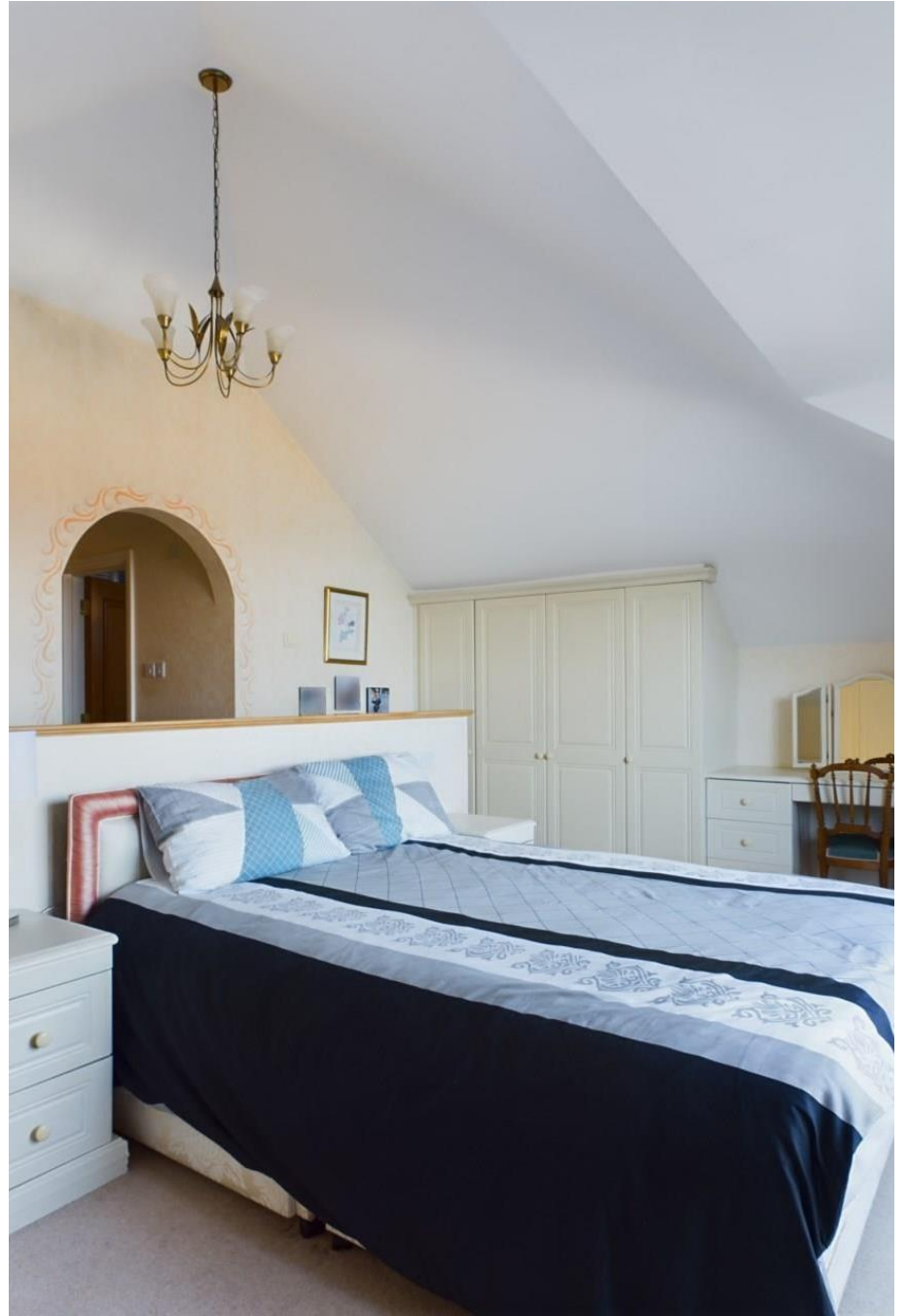
- Prestigious coastal location
- Stunning uninterrupted sea views
- Spacious 1,400 sq. ft. interior
- Three balconies
- Secure garage parking for three plus ample gated visitors
- Communal patio and BBQ area







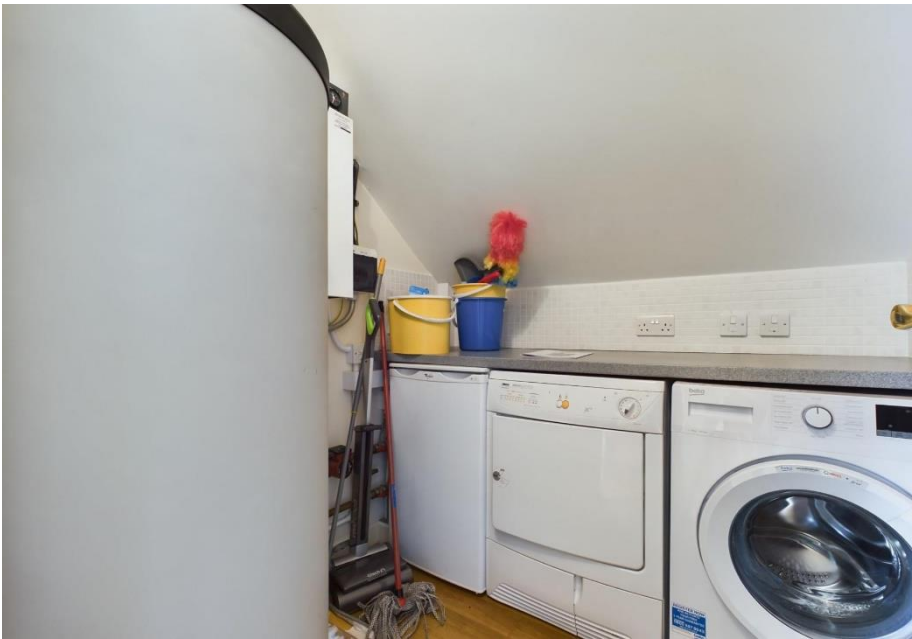






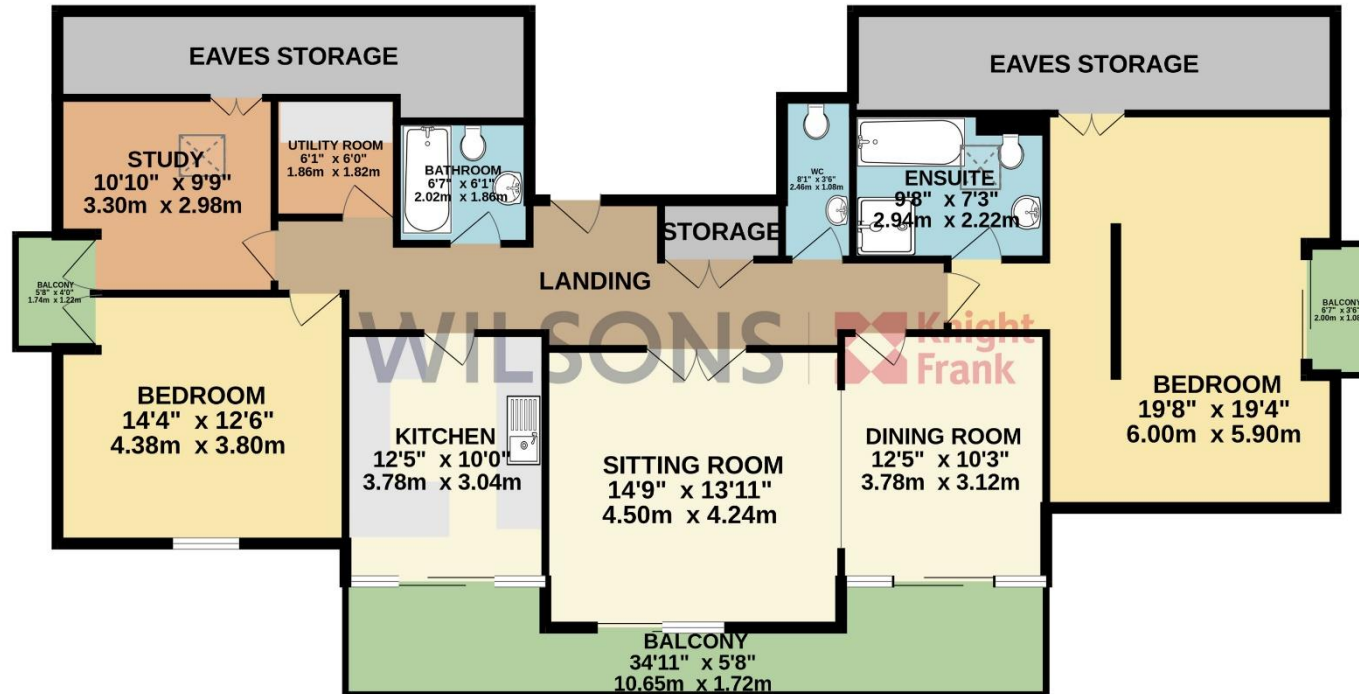








TOP FLOOR  
1605 sq.ft. (149.1 sq.m.) approx.



TOTAL FLOOR AREA : 1372sq.ft. (127.5 sq.m.) approx.

Whilst every attempt has been made to ensure the accuracy of the floorplan contained here, measurements of doors, windows, rooms and any other items are approximate and no responsibility is taken for any error, omission or mis-statement. This plan is for illustrative purposes only and should be used as such by any prospective purchaser. The services, systems and appliances shown have not been tested and no guarantee as to their operability or efficiency can be given.  
Made with Metropix ©2025

This plan is for layout guidance only. Not drawn to scale unless stated. Windows and door openings are approximate. Whilst every care is taken in the preparation of this plan, please check all dimensions, shapes and compass bearings before making any decisions reliant upon them.

## Services

Mains water

Mains drains

Underfloor electric heating

+441534 877977

Knight Frank Jersey

37-39 Halkett Place, St. Helier, Jersey JE2 4WG

[knightfrank.je](http://knightfrank.je)

Your partners in property

---

1. Particulars: These particulars are not an offer or contract, nor part of one. You should not rely on statements given by Knight Frank Jersey in the particulars, by word of mouth or in writing (“information”) as being factually accurate about the property, its condition or its value. Neither Knight Frank Jersey nor any joint agent has any authority to make any representations about the property, and accordingly any information given is entirely without responsibility on the part of Knight Frank Jersey. 2. Material Information: Please note that the material information is provided to Knight Frank Jersey by third parties and is provided here as a guide only. While Knight Frank Jersey has taken steps to verify this information, we advise you to confirm the details of any such material information prior to any offer being submitted. If we are informed of changes to this information by the seller or another third party, we will use reasonable endeavours to update this as soon as practical. 3. Photos, Videos etc: The photographs, property videos and virtual viewings etc. show only certain parts of the property as they appeared at the time they were taken. Areas, measurements and distances given are approximate only. 4. Regulations etc: Any reference to alterations to, or use of, any part of the property does not mean that any necessary planning, building regulations or other consent has been obtained. A buyer must find out by inspection or in other ways that these matters have been properly dealt with and that all information is correct. 5. Fixtures and fittings: A list of the fitted carpets, curtains, light fittings and other items fixed to the property which are included in the sale (or may be available by separate negotiation) will be provided by the Seller’s Lawyer. Particulars dated 05/09/2025. All information is correct at the time of going to print.

 Knight  
Frank

