



 2
Bedrooms

 1
Bathroom



This first-floor apartment offers two double bedrooms, a spacious lounge, a modern kitchen, and a bathroom. The property benefits from secure gated parking and is located close to the town centre and train station, making it an excellent choice for first-time buyers or investors.

Guide Price £190,000 - £210,000

Located in the popular development of Covesfield, Gravesend, this two-bedroom first-floor apartment is an ideal opportunity for first-time buyers or investors. The property features two double bedrooms, providing ample space for comfortable living. The lounge is generously sized, offering a versatile area for relaxation and entertainment. Adjacent to the lounge, the modern kitchen is well-equipped with essential appliances, including an oven and refrigerator, and features ample storage space with fitted cabinets.

The bathroom is designed with practicality in mind, featuring a bath with an overhead shower, a wash hand basin, and a wc. The apartment is part of a well-maintained development that offers secure gated parking, ensuring peace of mind for residents.

Situated close to Gravesend town centre, the property provides easy access to a range of amenities, including shops, restaurants, and cafes. The nearby train station offers convenient transport links, making commuting straightforward for those working in London or the surrounding areas.

With no forward chain, this property is ready for immediate occupancy, making it a practical choice for those looking to move quickly. The apartment's EPC rating of B highlights its energy efficiency, ensuring lower utility costs and a reduced environmental impact.

Overall, this apartment combines modern living with convenience, set in a desirable location with excellent transport links and local amenities.

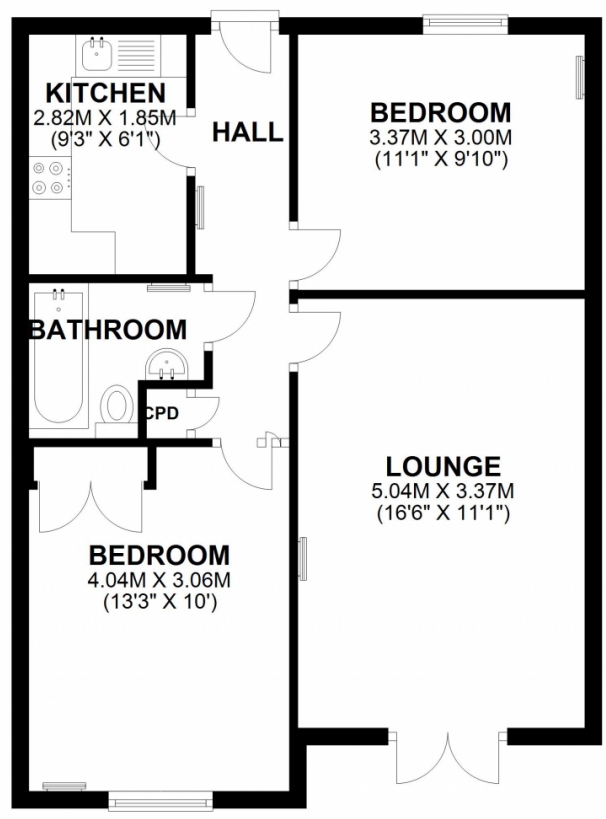
Lounge: 5.04m x 3.37m (16'6 x 11'1)

Bedroom 1: 4.04m x 3.06m (13'3 x 10')

Bedroom 2: 3.37m x 3.00m (11'1 x 9'10)

Kitchen: 2.82 x 1.85m (9'3 x 6'1)

FIRST FLOOR
APPROX. 55.4 SQ. METRES (596.6 SQ. FEET)



TOTAL AREA: APPROX. 55.4 SQ. METRES (596.6 SQ. FEET)

Energy Efficiency Rating		
	Current	Potential
<i>Very energy efficient - lower running costs</i>		
(92+) A		
(81-91) B	82	86
(69-80) C		
(55-68) D		
(39-54) E		
(21-38) F		
(1-20) G		
<i>Not energy efficient - higher running costs</i>		
England, Scotland & Wales		EU Directive 2002/91/EC

Address: HERITAGE PARK, DA11 0EG

