

A photograph of a living room interior. The room features a fireplace with a black wood burner, a black TV stand, and a doorway leading to another room. The walls are painted in a light brown color, and the ceiling has recessed lighting. The floor is covered in a light-colored carpet. The text "Forest Road" is written in a large, white, italicized font, and "Loughborough" is written in a smaller, white, sans-serif font below it.

Forest Road

Loughborough

3 Bed Detached House • LE11 3HS • £1,350 pcm • £1,550 Deposit



Forest Road, Loughborough

Soon available to let. A sizeable three bedroom, detached house situated in Loughborough. This large property holds three reception rooms, three washrooms and three double bedrooms. The adequately sized kitchen comes with necessary appliances. To the rear of the property is a good sized garden. Gated driveway and single garage included.

Lounge

The largest room in the property, an open living area with French doors giving access to the sitting room. This room comes with a feature log burner.

Sitting Room

One of three reception rooms, situated beside the lounge with sliding glass doors to give access to the rear garden.

Dining Room

A third reception room situated by the kitchen. Could be used as a dining room.

Kitchen

A sizeable kitchen with external access to the rear garden. Comes with a fridge / freezer, washing machine, dryer, dishwasher, oven and hob.

Master Bedroom

The largest of the three double bedrooms, overlooking the front garden. This room comes with additional storage and access to an ensuite bathroom.

Bedroom Two

The second largest bedroom, also overlooking the front garden. Comes with a built-in wardrobe.

Bedroom Third

A third double bedroom on the first floor, overlooking the rear garden.

Shower Room

The family washroom situated on the first floor. Comes with a walk-in shower, two separate sinks and toilet.

Ensuite

A three piece bathroom, accessed only via the master bedroom. Includes a bath, sink, toilet and shower above the bath.

Downstairs Shower Room

Situated by the kitchen on the ground floor. A three piece washroom with a walk-in shower, sink and toilet.

Garden

A sizeable garden to the rear of the property, includes a shed for storage.

Parking

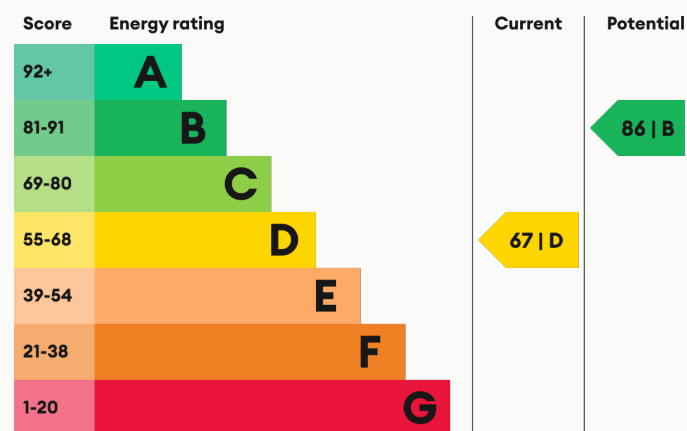
Gated driveway parking beside the garden with a single garage.

Heating

Gas-fired central heating.

For more information about this property, visit our website huntleys.net.

Energy Performance



We aim to make our particulars both accurate and reliable. However they are not guaranteed; nor do they form part of an offer or contract. If you require clarification on any points then please contact us, especially if you are traveling some distance to view. All measurements are to widest point.



Lounge



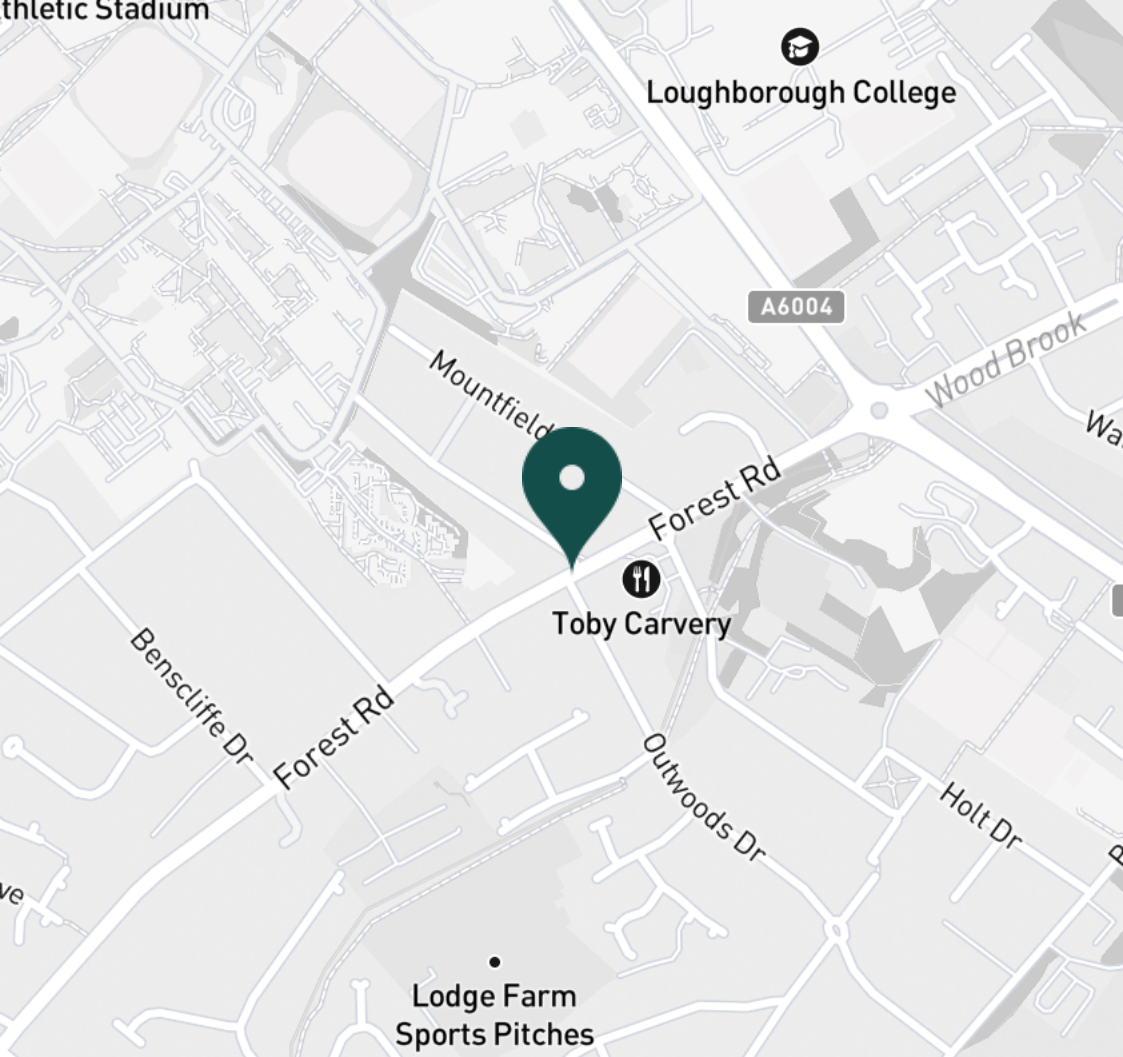
Lounge



Sitting room



Sitting room



SUPERMARKETS

Tesco Extra Loughborough	1.1 mi
Co-op Food Knightthorpe Rd	1.3 mi
Sainsburys Loughborough	1.3 mi
Tesco Superstore Loughborough	1.3 mi
Marks & Spencer	1.5 mi

GYMS

Radmoor Centre	0.6 mi
Loughborough University Pool	0.8 mi
Loughborough Sport	0.8 mi
Fit4Less	0.9 mi
Dynamite Gym Ltd	1.0 mi

TRAIN STATIONS

Loughborough	2.0 mi
Barrow upon Soar	3.9 mi
Sileby	5.7 mi
Syston	9.8 mi
South Wigston	11.0 mi

NURSERY SCHOOLS

Emmanuel PS	0.6 mi
Parkside PS	0.8 mi
Loughborough Campus Nursery	0.9 mi
Little House Day Nursery	1.0 mi
Westwards Nursery	1.1 mi

PRIMARY SCHOOLS

Mountfields Lodge Sch	0.2 mi
Sacred Heart Catholic PS	0.7 mi
Holywell PS	1.0 mi
Our Lady's Convent Sch	1.1 mi
Beacon Primary Academy	1.2 mi

HIGH SCHOOLS

Loughborough College	0.6 mi
Lboro Uni School Of The Arts	0.7 mi
Our Lady's Convent Sch	1.1 mi
Woodbrook Vale	1.5 mi
RNIB College Loughborough	1.5 mi

Discover
Loughborough



- ✓ Three Double Bedrooms
- ✓ Three Washrooms
- ✓ Garage
- ✓ Available Soon
- ✓ Close to University
- ✓ Loughborough





Kitchen



Kitchen



Kitchen



Kitchen



Kitchen



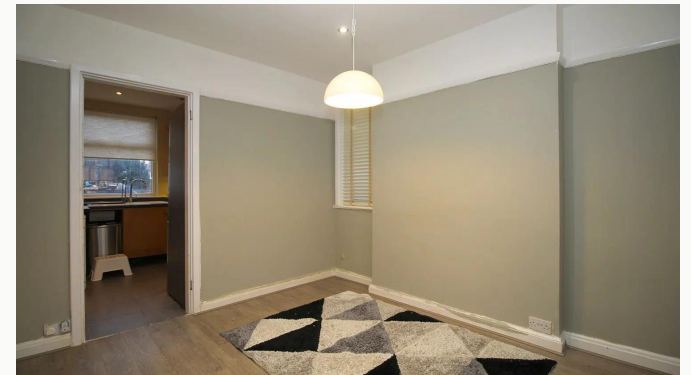
Kitchen



Dining Room



Dining Room



Dining Room



Dining Room



Master Bedroom



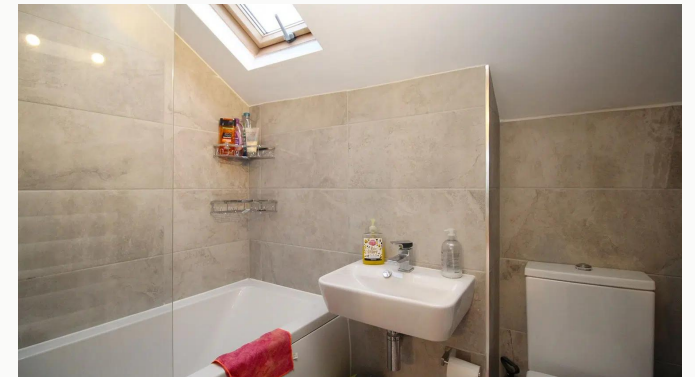
Master Bedroom



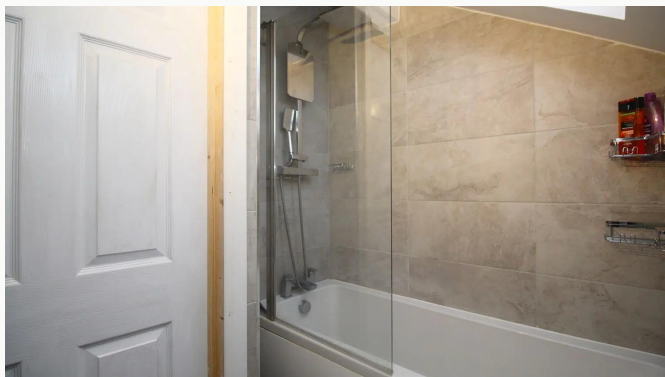
Master Bedroom



Master Bedroom



Ensuite



Ensuite



Bedroom Two



Bedroom Two



Bedroom Two



Bedroom Three



Bedroom Three



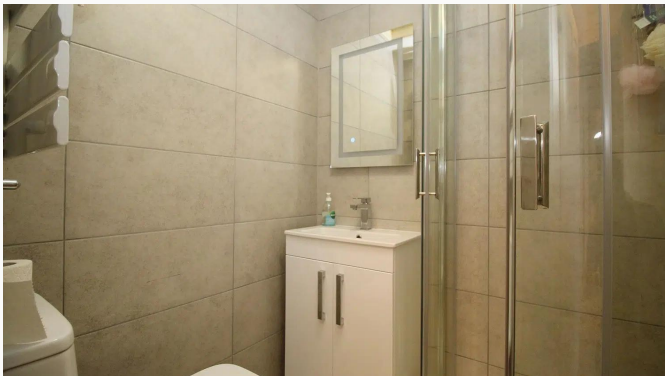
Bedroom Three



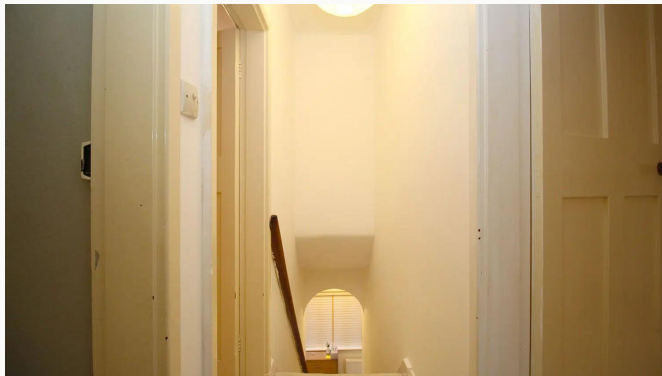
Shower Room



Shower Room



Downstairs Shower Room



Landing



Entrance Hall



Front of House



Garden



Garden



Garden



Driveway / Garage



Driveway / Garage

Available
From 05/06/2026

Comes
Unfurnished

Bedrooms
3

Receptions
3

Bathrooms
3

Parking
Driveway

Postcode
LE11 3HS

Rent
£1,350 pcm

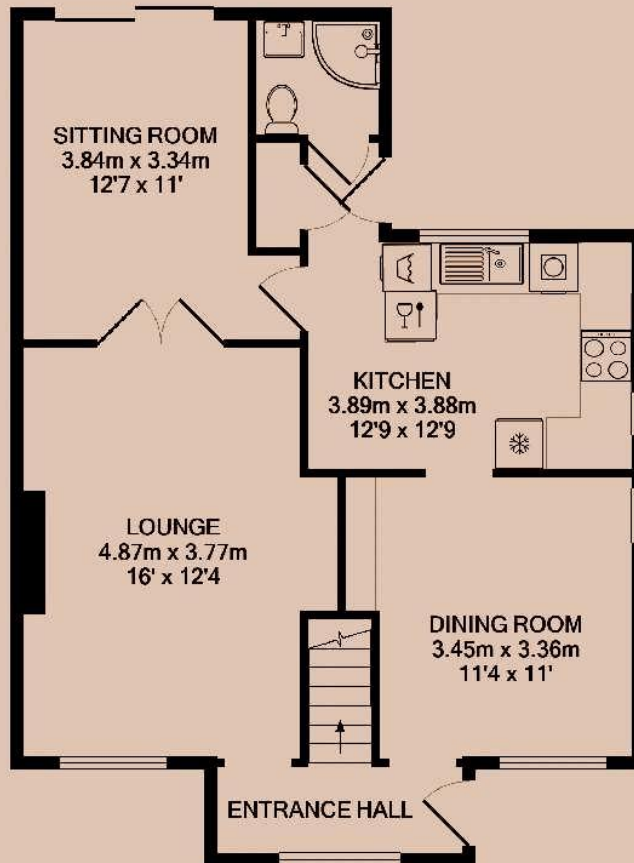
Deposit
£1,550

EPC
67 | D

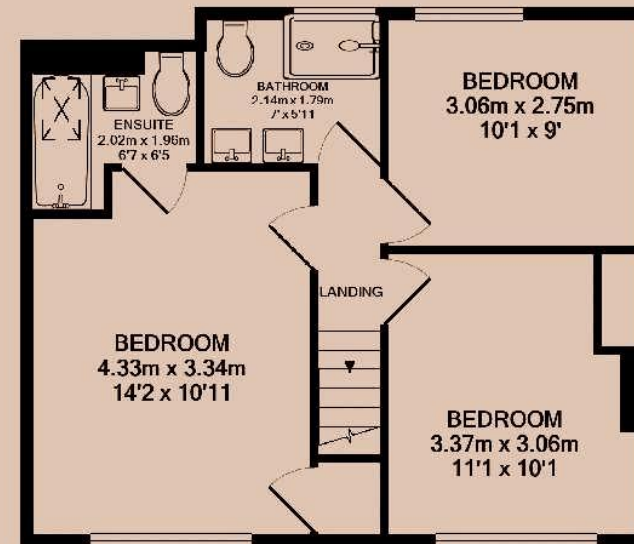
Council Tax Band
D

ID
#12070

Updated
14/05/2026



GROUND FLOOR



1ST FLOOR

Have a property like this? Let's work together.

Design and marketing are at the heart of our approach. With most people now looking for property online, we can get our clients' properties in front of as many people as the most prominent national agents. Where we differ is in the quality of our work. We create stunning digital particulars that highlight the individual attributes of every property we market, with videos and floor plans as standard.



OUR OFFICE
7 Biggin Street
Loughborough, LE11 1UA

CONTACT US
01509 320 320
let@huntleys.net

