



## Cromwell Road, SW7

£550 Per week

A large studio apartment on the second floor of this popular building with lift access and 24 hour porter. The kitchen is separate with its own private bathroom facility.

Superbly located close to Gloucester Road with its underground station and wealth of amenities including numerous shops, bars, restaurants, cafés and super markets.

### Features

- Spacious Studio
- Separate Kitchen
- Modern Bathroom
- Lift Access
- 24 Hour Porter

# Cromwell Road, London, SW7

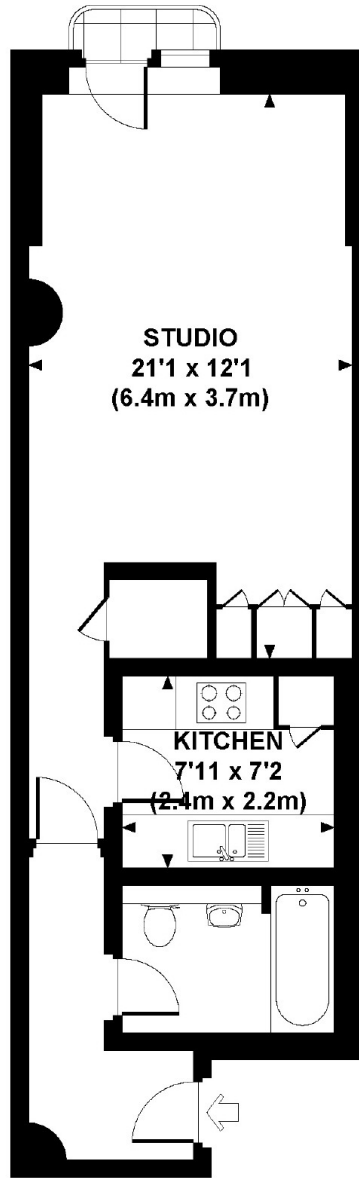
## POINT WEST, CROMWELL ROAD, SW7

Approx. gross internal area

416 Sq Ft.

Representation of current layout.

Not to scale.



SECOND FLOOR