

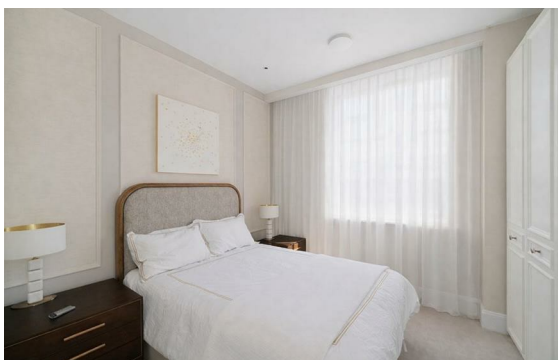
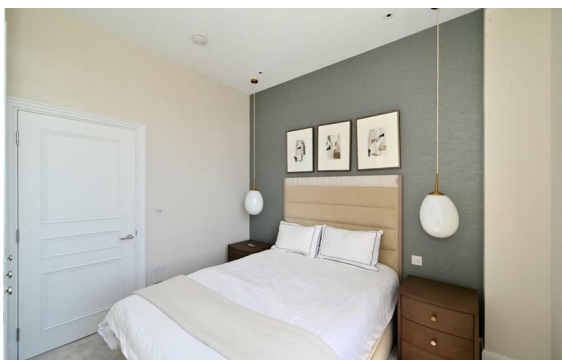
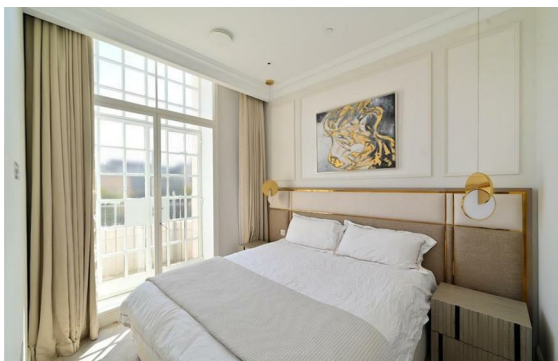


Cosway Street, Marylebone, London, NW1

Rent £1,350 Per Month

3 Bed | 3 Bath | 1 Reception

Please call us on 020 7724 2233 or email us info@newingtonstates.com to book a viewing.



60 Upper Montagu Street

London

W1H 1SN

020 7724 2233

info@newingtonestates.com

A spacious three-bedroom apartment comprises a large double reception room, a fully fitted kitchen, and three well-proportioned double bedrooms. The principal bedroom benefits from an en-suite bathroom, while a further family bathroom and guest cloakroom provide additional convenience. The layout is ideal for families or sharers, with generous room sizes throughout.

Residents benefit from lift access, security. The property is conveniently located close to Marylebone Station, Edgware Road Station, Paddington Station, and Marble Arch Station, providing excellent connectivity across London and beyond.

EPC rating: C

Energy Efficiency Rating: C

Agents Note: Whilst every care has been taken to prepare these particulars, they are for guidance purposes only. All measurements are approximate and are for general guidance purposes only and whilst every care has been taken to ensure their accuracy, they should not be relied upon and potential buyers/tenants are advised to recheck the measurements.

<http://www.newingtonestates.com>