



1 Cagney Drive  
Swindon

£450,000  
mcfarlane  
property.com



## 1 Cagney Drive

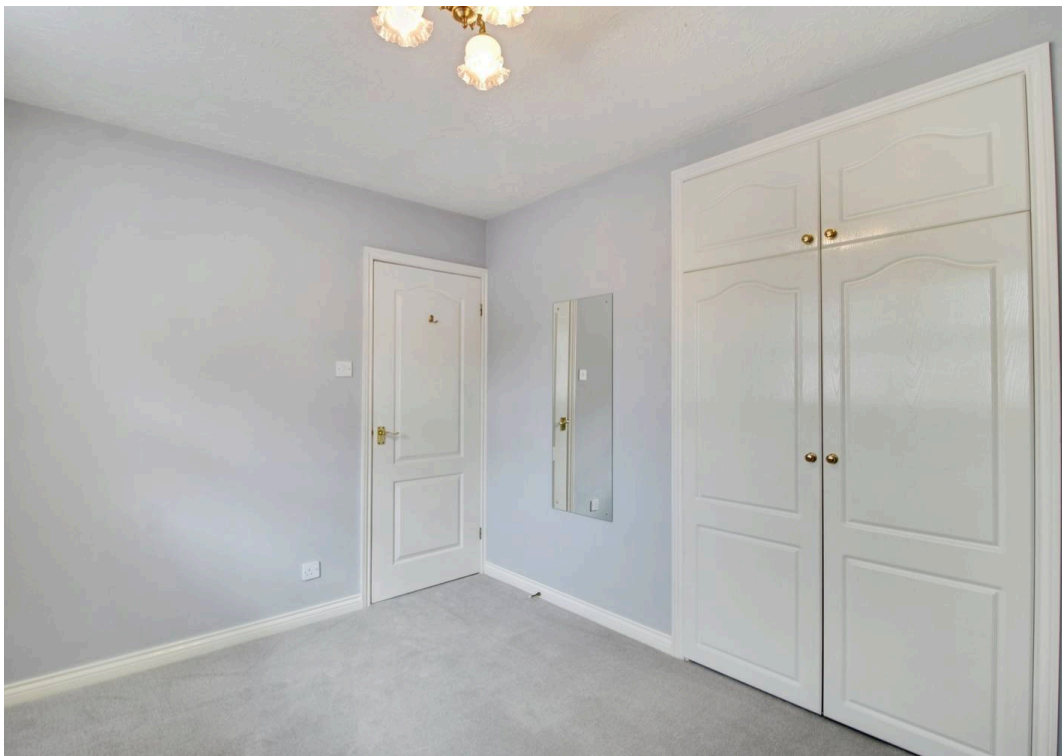
Abbey Meads, Swindon

Situated in a popular residential area of North Swindon, this **four-bedroom detached family home** offers well-balanced accommodation, a generous driveway and an integral garage. The property features versatile living space including a bright living room, separate dining area with doors opening onto the garden, and a fitted kitchen with adjoining utility area.

Upstairs provides four well-proportioned bedrooms, including a main bedroom with en-suite, along with a family bathroom. Externally, the home enjoys a pleasant enclosed rear garden, ideal for outdoor entertaining, while the front benefits from ample off-road parking. This property is well suited to families seeking space, convenience and a desirable location.

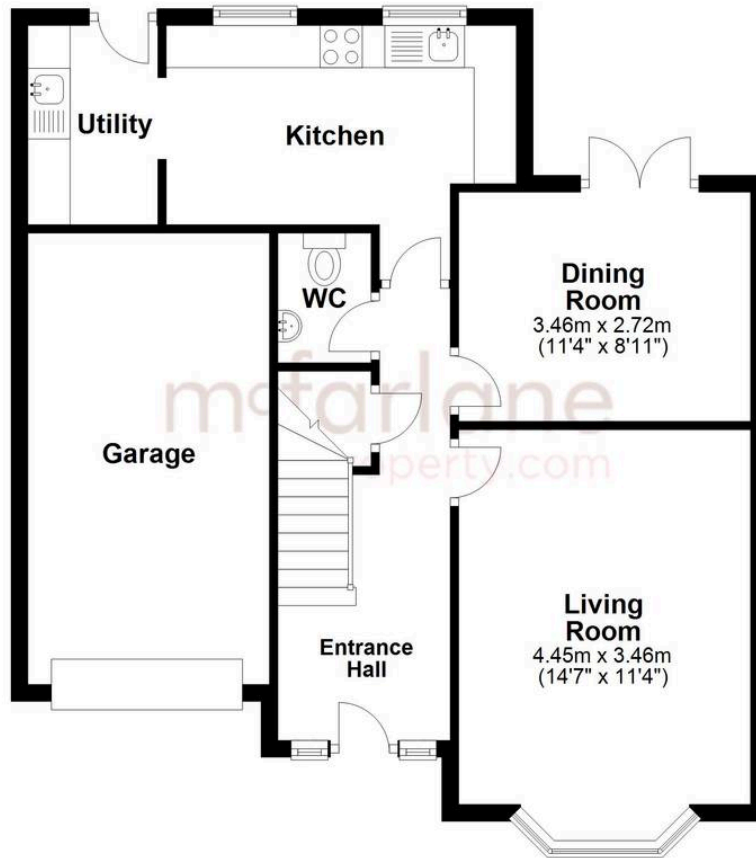
- FOUR BEDROOM DETACHED HOUSE
- GENEROUS DRIVEWAY
- GARAGE
- SPACIOUS LIVING ACCOMMODATION
- FITTED KITCHEN WITH UTILITY AREA
- EN-SUITE TO MAIN BEDROOM
- ENCLOSED REAR GARDEN
- QUIET CUL-DE-SAC LOCATION





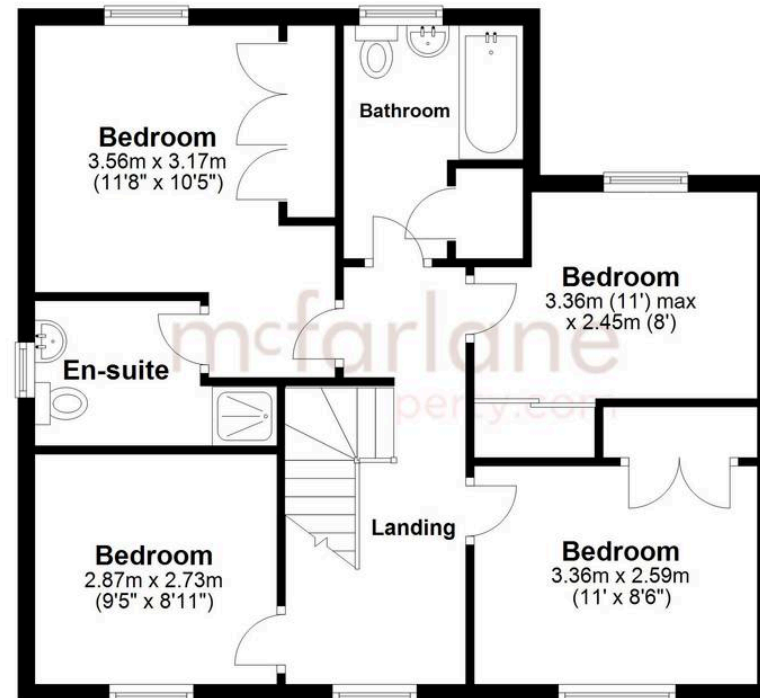
### Ground Floor

Approx. 68.1 sq. metres (733.3 sq. feet)



### First Floor

Approx. 61.5 sq. metres (662.2 sq. feet)



Total area: approx. 129.7 sq. metres (1395.5 sq. feet)

## McFarlane Sales & Lettings

North Swindon, Redhouse Village Centre, Swindon - SN25 2FW

01793 296600 • swindon@mcfarlaneproperty.com • www.mcfarlaneproperty.com/