



## Meadowbank Close

Isleworth, TW7

£375,000

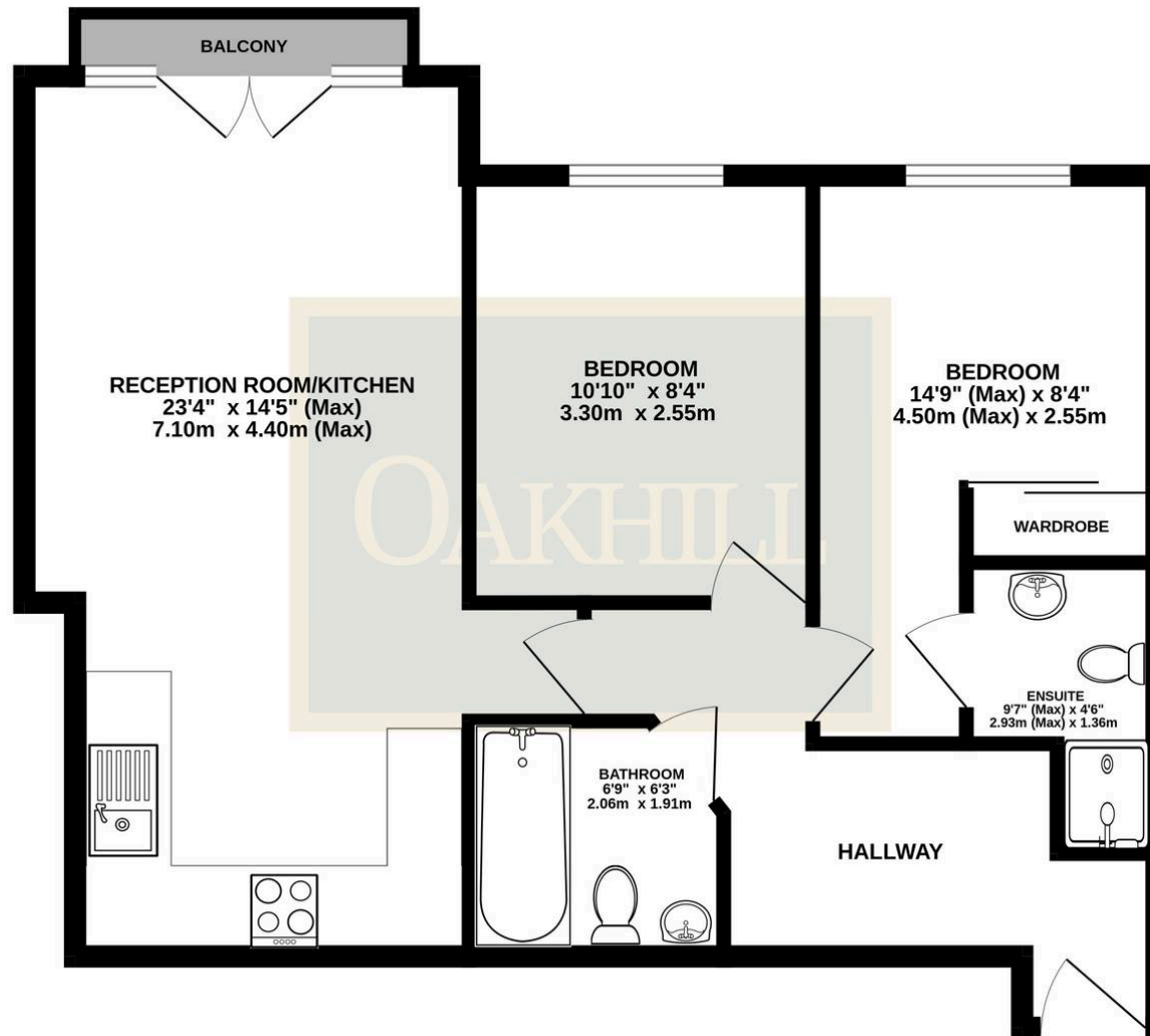
Situated in a sought after modern development, this well presented two double bedroom first floor apartment is ideally located within a short walk to Isleworth train station, Osterley tube station, a choice of excellent local schools, a range of local amenities and the beautiful Osterley Park. Offered to the market chain free, the property offers a spacious hallway with a large storage cupboard, a spacious principal bedroom with an en-suite shower room, second double bedroom, modern family bathroom and a bright and spacious reception with an open plan modern kitchen and balcony. The property also benefits from allocated parking, gas central heating, double glazing and well kept communal areas.

- No Forward Chain
- Two Double Bedrooms
- Allocated Parking
- Short Walk to Tube and Train Stations
- Two Bathrooms
- Ample Internal Storage
- Large Open Plan Reception Room/Kitchen
- Sought After Location



SCAN HERE  
FOR  
PROPERTY  
DETAILS





TOTAL FLOOR AREA : 624sq.ft. (58.0 sq.m.) approx.

Whilst every attempt has been made to ensure the accuracy of the floorplan contained here, measurements of doors, windows, rooms and any other items are approximate and no responsibility is taken for any error, omission or mis-statement. This plan is for illustrative purposes only and should be used as such by any prospective purchaser. The services, systems and appliances shown have not been tested and no guarantee as to their operability or efficiency can be given.

Made with Metropix ©2026