



NORTH END ROAD, W14

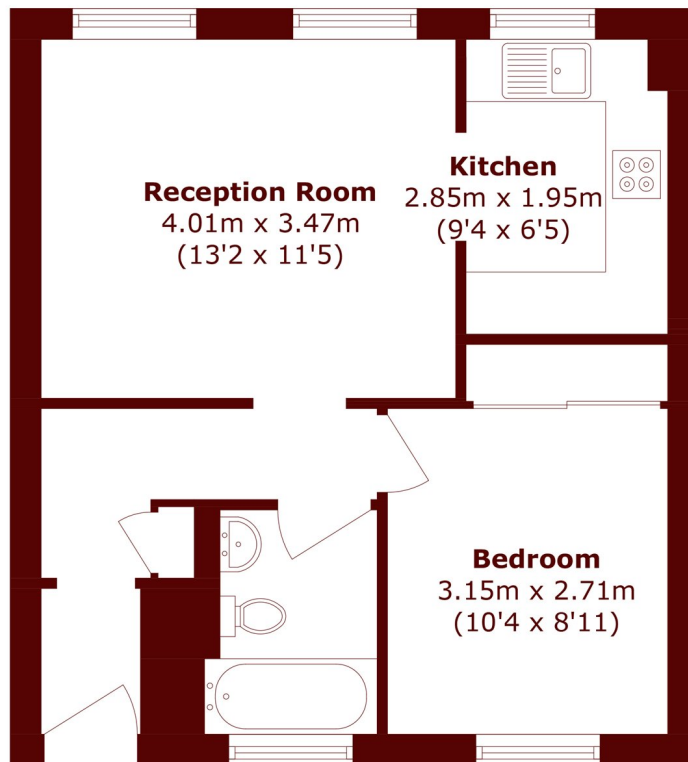
£415,000

A spacious one-bedroom flat on the first floor of a purpose-built, gated block. The property offers a separate kitchen, good storage, and plenty of potential to update and make it your own.

One Bedroom
First Floor
Purpose Built

No Onwards Chain
Kensington Olympia
Potential To Modernise

STEP INSIDE NORTH END ROAD



First Floor

Total area (approx.): 40.7 sq. m (438.1 sq. ft)

Brook Green
020 7605 7765

Energy Rating: We aim to make our particulars both accurate and reliable. However, they are not guaranteed; nor do they form part of an offer or contract. If you require clarification on any points then please contact us, especially if you're traveling some distance to view. Please note that appliances and heating systems have not been tested and therefore no warranties can be given as to their good working order

MARSH &
PARSONS