



Linton Road, Loose, Maidstone, ME15 0AL
Offers In Excess Of £400,000



*****NO FORWARD CHAIN*** – A RARE OPPORTUNITY WITH EXCEPTIONAL POTENTIAL AND UNINTERRUPTED OUTLOOK**

Set on a generous plot along a quiet lay-by on Linton Road, this detached two-bedroom bungalow offers far more than meets the eye. Backing onto protected open land that cannot be built on, the property enjoys a truly special sense of space, privacy and uninterrupted natural outlook — a feature that is increasingly rare and highly sought after.

Inside, the home provides well-proportioned accommodation including a spacious living room, kitchen/diner, two double bedrooms, bathroom, and a light-filled conservatory overlooking the expansive garden. Character touches such as parquet flooring add warmth and charm, while the overall layout offers a solid foundation for modernisation.

For those with vision, the true appeal lies in the outstanding scope to enhance and extend. The substantial loft with ample head height, presents an exciting opportunity to create a luxurious master suite — potentially transforming the home with a stunning principal bedroom and ensuite retreat (subject to the usual permissions).

Externally, the generous rear garden is predominantly laid to lawn and enjoys a peaceful, open backdrop, perfect for families, entertaining or simply unwinding in a private setting. To the front, a driveway provides ample off-road parking alongside an integral garage.

Situated within easy reach of local amenities, and close to the picturesque Loose Valley Conservation Area with its beautiful walks, the location strikes a perfect balance between convenience and countryside charm. Excellent rail links from nearby Marden and Staplehurst provide straightforward access to London.

This is more than just a property — it's a chance to create something truly special in a setting that cannot be replicated.

Early viewing is highly recommended. Contact Page & Wells today to secure this exceptional opportunity.



Entrance Hall

Living Room 12'1" x 13'11" (3.69m x 4.26m)

Kitchen/Diner 9'6" x 12'0" (2.90m x 3.68m)

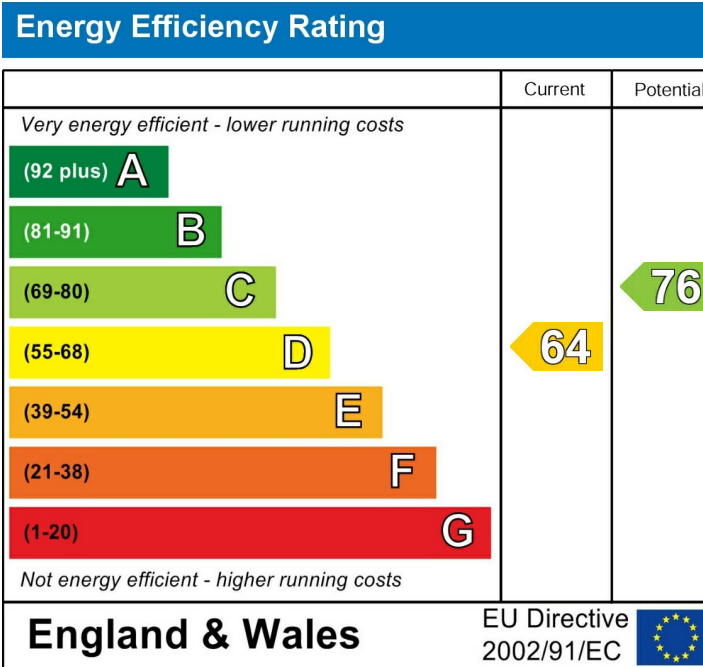
Conservatory 10'7" x 6'3" (3.24m x 1.91m)

Bedroom 1 13'1" x 14'9" (4.00m x 4.52m)

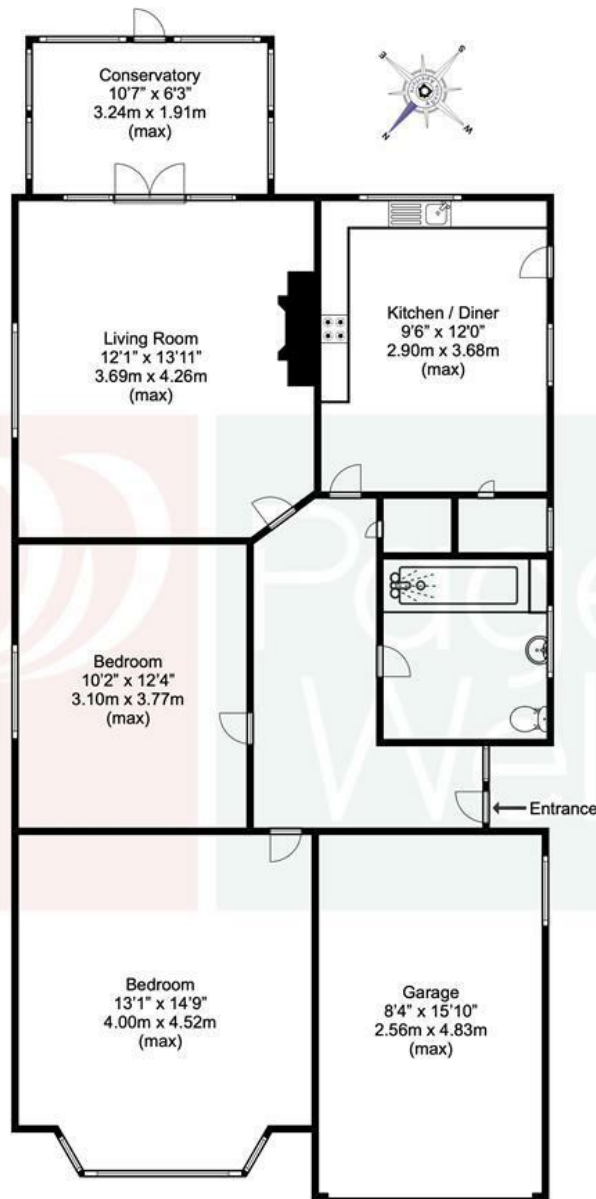
Bedroom 2 10'2" x 12'4" (3.10m x 3.77m)

Bathroom

Garage 8'4" x 15'10" (2.56m x 4.83m)



Page & Wells limited for themselves and for the vendors of this property whose agents they are give notice that: 1. These particulars do not constitute any part of, an offer or a contract. 2. All statements contained in these particulars as to this property are made without responsibility on the part of Page & Wells Limited or the Vendor. 3. None of the statements contained in these particulars as to the property is to be relied on as statements or representations of fact. 4. Any intending purchaser must satisfy himself by inspection or otherwise as to the correctness of each of the statements contained in these particulars. 5. The vendor does not make or give, and neither Page & Wells Limited nor any person in their employment has any authority to make or give any representation whatsoever in relation to this property. These particulars are supplied on the understanding that all negotiations are carried out throughout Page & Wells Limited. Properties with a reference prefixes EAA are those which Page & Wells Limited disclose an interest in accordance with the provisions of the Estates Agents Act 1979



Approx. total floor area
(Incl. Garage)
1,003 SQ.FT.
93.22 SQ.M.

Disclaimer

This plan is for illustrative purposes only and no responsibility is taken for any error, omission or misstatement. The appliances shown have not been tested and no guarantee as to their operability or efficiency can be given. Measurements have been added as a guide to prospective buyers only, are not precise, not to scale, may have been taken from the widest area and may include wardrobe / cupboard space. Garages and outbuildings may not be represented in their actual location in relation to the property. Compass point, measurements and total areas should be considered inaccurate and checked as no guarantee is given to their accuracy. Buyers are strongly advised to take their own measurements and compass bearing.

