



Silk Croft, Horton Crescent, Epsom

Guide Price **£485,000**



Silk Croft, Horton Crescent

Epsom

Beautifully presented 3-bed first floor flat in sought after Livingstone Park. Spacious accommodation, en-suite to master, modern kitchen, allocated parking, secure entry, and fabulous communal grounds. Close to amenities and transport. Call today to view!

Council Tax band: D

Tenure: Leasehold

EPC Energy Efficiency Rating: B

EPC Environmental Impact Rating: B

- Sought After Livingstone Park
- Spacious First Floor Apartment
- Dual Aspect Views
- Bright & Spacious Reception
- Modern Kitchen
- Three Double Bedrooms
- En-Suite Shower To Master
- Modern Bathroom
- Allocated Parking
- Wonderful Communal Grounds



Situated within the highly desirable Livingstone Park development, this beautifully presented three bedroom flat offers an exceptional standard of living.

Positioned on the first floor, the apartment enjoys dual-aspect views that flood the spacious accommodation with natural light. The property features a bright and airy reception room, ideal for both relaxing and entertaining guests. The contemporary kitchen is well-appointed with integrated appliances and ample storage, perfectly suited to everyday living and home cooking.

All three bedrooms are generously sized and comfortably accommodate double beds. The principal bedroom benefits from a stylish en-suite shower room, while the remaining bedrooms are served by a modern family bathroom. Additional advantages include allocated parking and secure entry access, enhancing both convenience and peace of mind.

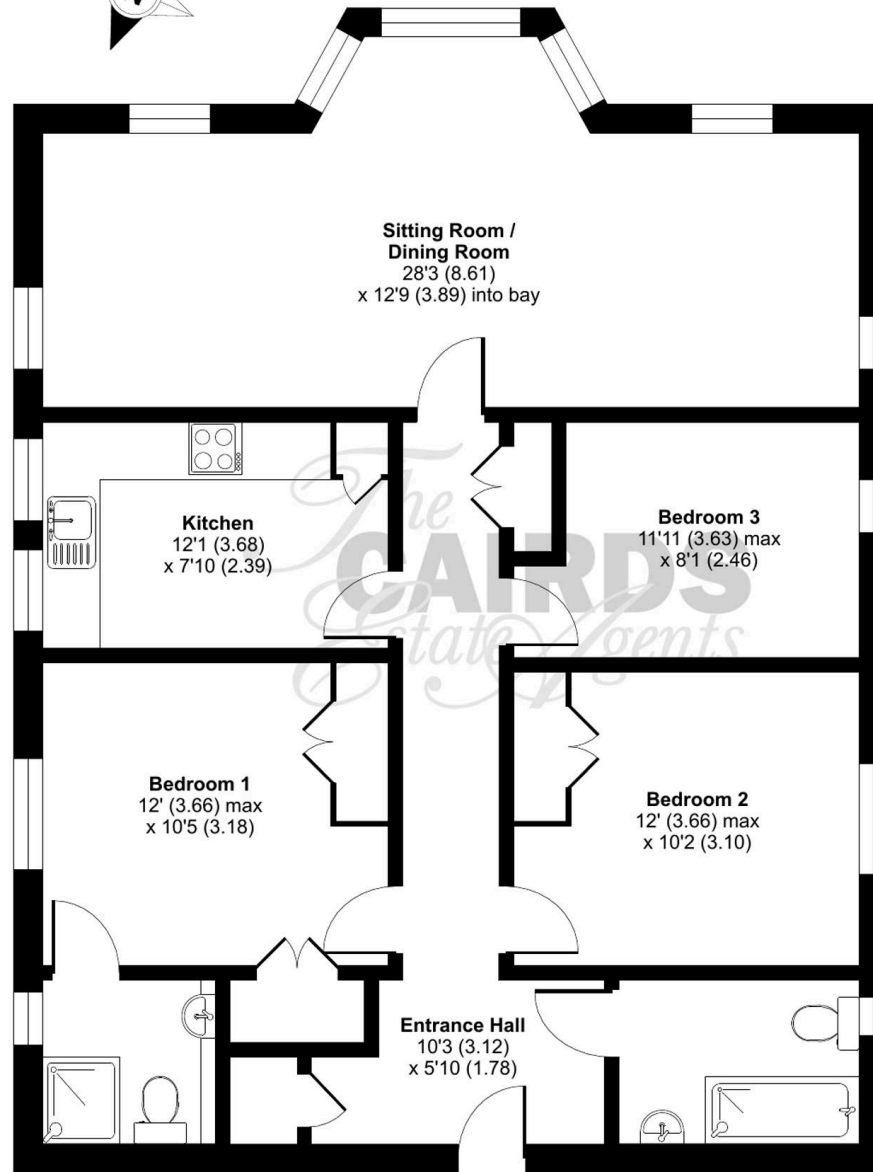
Residents can also enjoy the beautifully maintained communal grounds, providing a peaceful and attractive environment. Livingstone Park is highly regarded for its welcoming community atmosphere and excellent access to local amenities, including shops, schools, and transport connections. Offering the perfect balance of tranquillity and practicality, this property is ideal for a variety of buyers.

Early viewing is strongly recommended to fully appreciate everything this superb apartment has to offer.

Silk Croft, Horton Crescent, Epsom, KT19

Approximate Area = 1019 sq ft / 94.6 sq

For identification only - Not to scale



FIRST FLOOR





Cairds The Estate Agents

Cairds The Estate Agents, 128-130 High Street - KT19 8BT

01372 743033 • homes@cairds.co.uk • www.cairds.co.uk