



Chelford
Ashcroft Drive


IRLAMS
of Knutsford



Chelford, SK11 9GF

Ashcroft Drive

£400,000



The Property

This superb, modern semi-detached family home comes immaculately presented throughout and offers fantastic, flexible living space over two floors. Recently constructed by multi award-winning developer, David Wilson Homes, this property remains in pristine condition throughout. Particular mention must be made of the spacious living room with large dual aspect flooding the room with natural daylight, the modern Dining Kitchen with a fitted range of quality integrated appliances and French doors out to the private garden, the master bedroom with en-suite shower room as well as the beautifully appointed family bathroom. Located in an enviable position within the development, the property lies within easy reach of all local amenities, with Chelford Train Station being within a short walk.

The property is approached via a beautiful front garden, laid to lawn in the main, with paved path leading to the front entrance. A tarmac driveway provides off-road parking for two vehicles.

To the rear is a private and enclosed garden mainly laid to lawn fully retained by a sweeping brick wall and woodlap fencing. A paved patio accessed from the Dining Kitchen provides the perfect spot for outdoor dining and entertaining with family and friends.

Directions

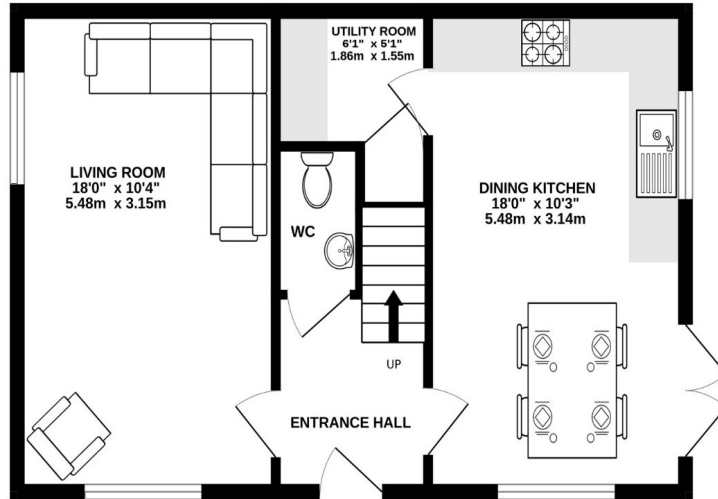
From the roundabout in Canute Square travel along King Edward Road (A50) turning left at the traffic lights passing the railway station. Continue through the traffic lights onto the A537 signed Chelford and proceed through Ollerton. On entering Chelford just past Chelford Farm Supplies on your right, turn left into Dixon Drive and take the right turn into Ashcroft Drive.

- An immaculately presented double fronted semi-detached property
- Situated in the heart of Chelford village
- Downstairs WC
- Beautiful dining kitchen with integrated appliances
- Three bedrooms
- Two bathrooms (one en-suite)
- Lovely enclosed garden
- Off road parking

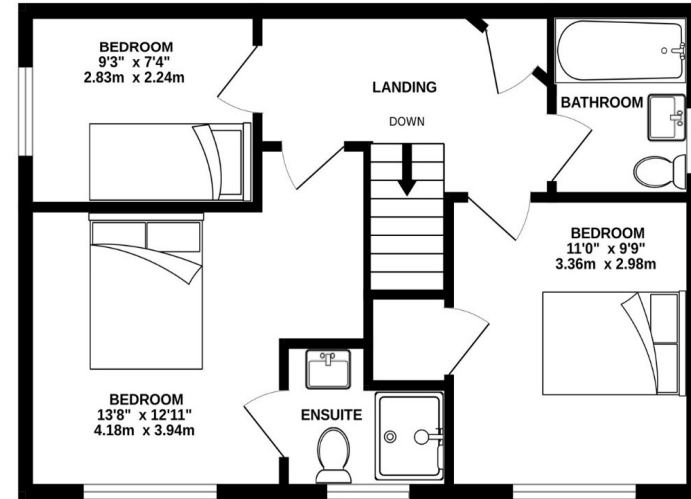
Postcode – SK11 9GF
EPC Rating – B
Tenure – Freehold
Local Authority – Cheshire East
Council Tax – Band D



GROUND FLOOR
481 sq.ft. (44.6 sq.m.) approx.



1ST FLOOR
481 sq.ft. (44.6 sq.m.) approx.



TOTAL FLOOR AREA : 961 sq.ft. (89.3 sq.m.) approx.

Whilst every attempt has been made to ensure the accuracy of the floorplan contained here, measurements of doors, windows, rooms and any other items are approximate and no responsibility is taken for any error, omission or mis-statement. This plan is for illustrative purposes only and should be used as such by any prospective purchaser. The services, systems and appliances shown have not been tested and no guarantee as to their operability or efficiency can be given.
Made with Metropix ©2024

103 King Street, Knutsford, Cheshire, WA16 6EQ

01565 654 000

E: info@irlamsestateagents.co.uk

www.irlamsestateagents.co.uk

I1021_ Printed by Ravensworth 01670 713330

Irlams (Estate Agents) Ltd for themselves and for the vendors or lessors of this property whose agents they are give notice that:

- (a) The particulars are set out as a general outline only for the guidance of intending purchasers or lessees, and do not constitute, nor constitute part of, an offer or contract;
- (b) All descriptions, dimensions, references to condition and necessary permissions for use and occupation, and other details are given in good faith and are believed to be correct but any intending purchasers or lessees should not rely on them as statements or representations of fact, but must satisfy themselves by inspection or otherwise as to the correctness of each of them;
- (c) No person in the employment of Irlams (Estate Agents) Ltd has any authority to make or give any representation or warranty whatsoever in relation to this property.

