



Heath End Road, Nuneaton, CV10 7JG

**SHELDON
BOSLEY
KNIGHT**

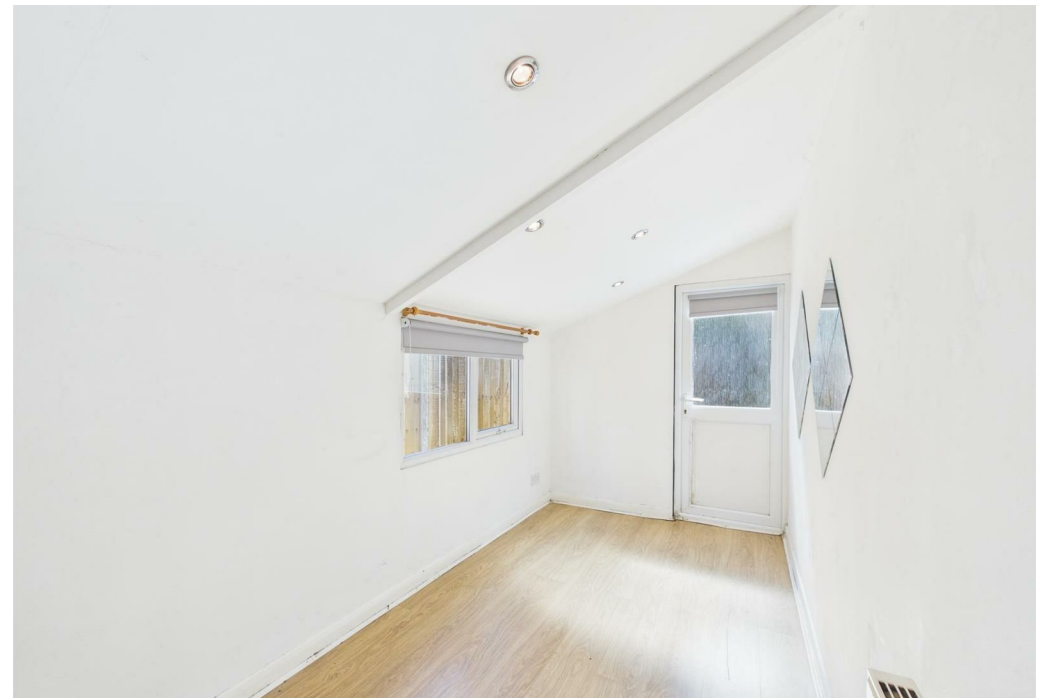
LAND AND
PROPERTY
PROFESSIONALS

Property Description

*** AVAILABLE IMMEDIATELY ***

Ground floor two bedroom apartment conveniently located within walking distance of George Eliot Hospital. The property briefly comprises kitchen, lounge, bathroom and two bedrooms, with a small courtyard to the rear. Well presented, with gas central heating, available for immediate occupation. Council tax band A, EPC C.





Key Features

- Ground Floor Flat
- Two Bedrooms
- Walking Distance of George Eliot Hospital
- Courtyard
- Council Tax Band A
- Available Immediately

£695 PCM