



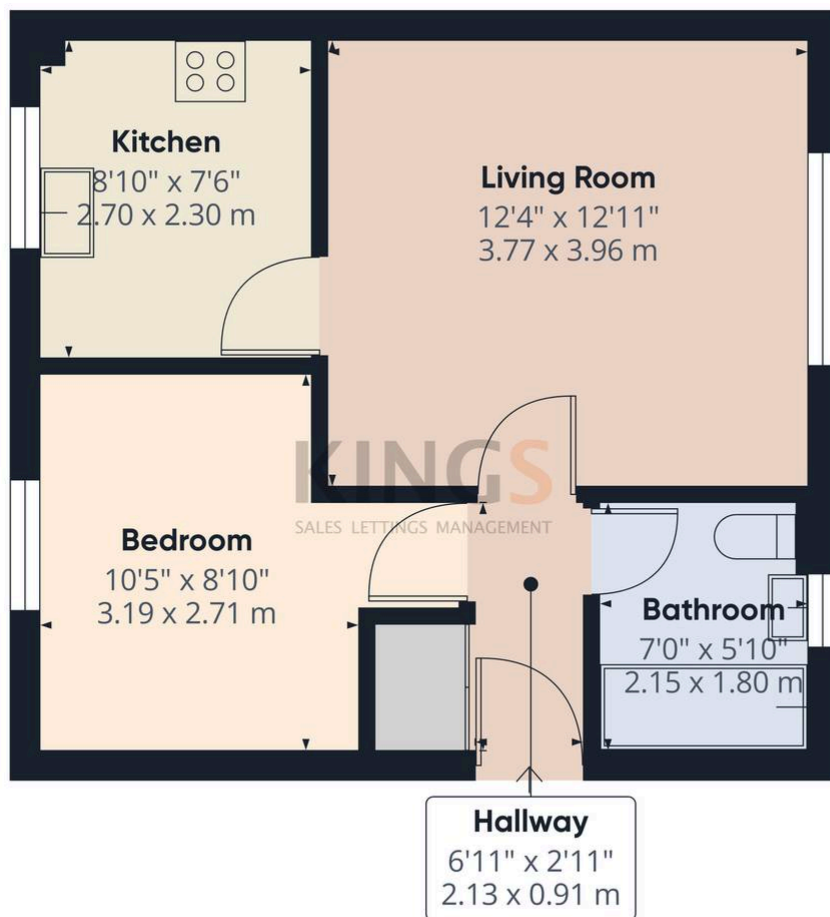
Tempsford, Welwyn Garden City

Offers Over £200,000 Share of Freehold

FIRST FLOOR APARTMENT • ONE DOUBLE BEDROOM • SPACIOUS LIVING ROOM • SEPARATE KITCHEN • MODERN BATHROOM • ALLOCATED PARKING BAY • NEAR TO OPEN GREEN SPACES • QUIET RESIDENTIAL ROAD • SHARE OF FREEHOLD • EPC RATING - C

KINGS

SALES LETTINGS MANAGEMENT



Approximate total area⁽¹⁾
401 ft²
37.1 m²

(1) Excluding balconies and terraces

Calculations reference the RICS IPMS 3C standard. Measurements are approximate and not to scale. This floor plan is intended for illustration only.

GIRAFFE360

