



Strand Drive, TW9

£4,500 Per calendar month

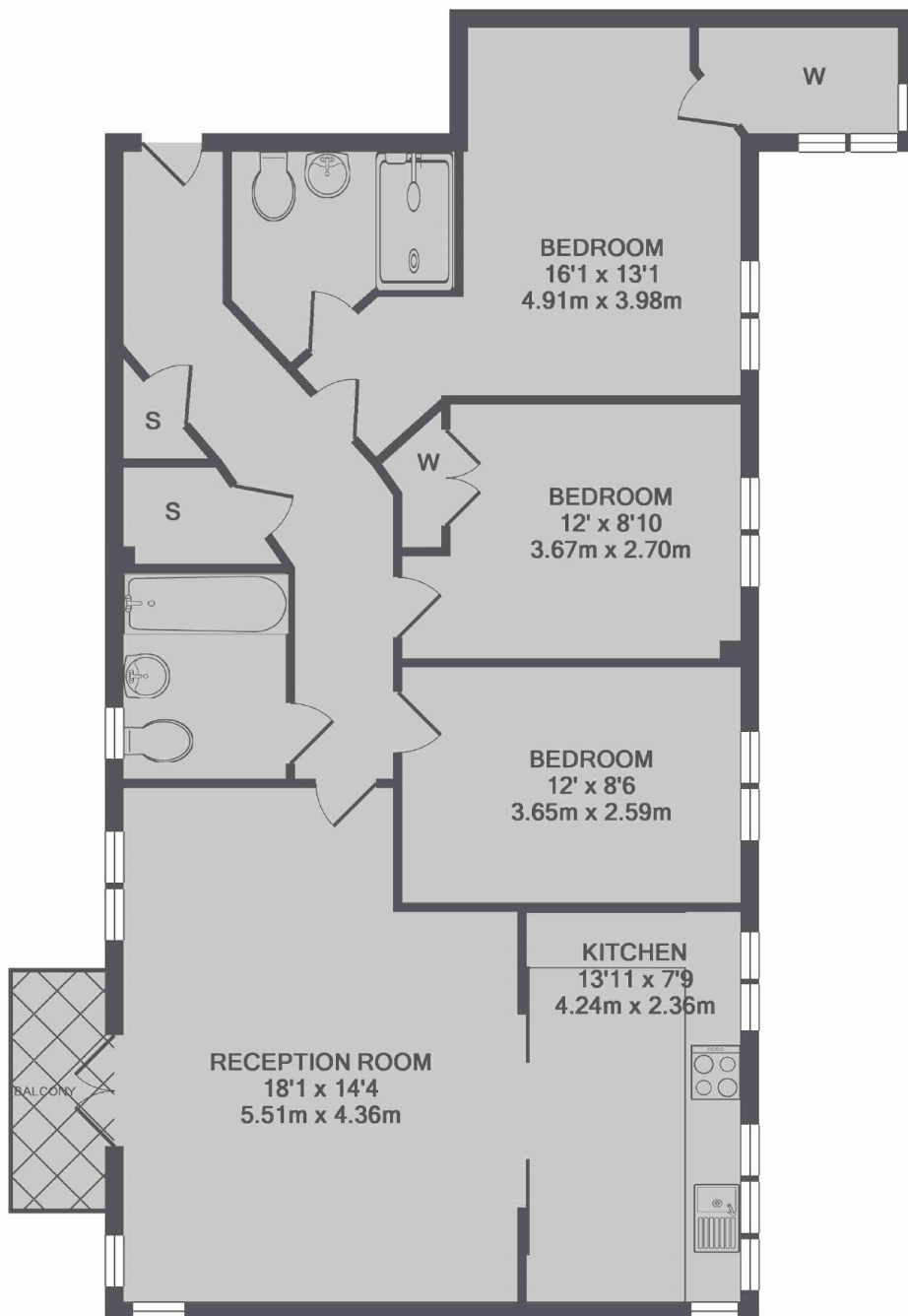
A three double bedroom apartment in the Kew Riverside Park development with full use residents gym and concierge. This property has an open plan kitchen, balcony and allocated parking.

Strand Drive is located under a mile from Kew Gardens station, Village and Kew Green, and under a quarter of a mile from Kew Retail Park.

Features

- Riverside Development
- Three Bedrooms
- Allocated Parking
- Modern Fitted Kitchen
- Two Bathroom
- Concierge Service

Strand Drive,
Richmond, TW9



TOTAL APPROX. FLOOR AREA 1002 SQ.FT. (93.1 SQ.M.)