



## Flat 29, Jargonelle House 17 Pavana Square, London, Brentford, TW8

**OVW**  
**£2,100 Per month**

- Spacious 1-bedroom flat
- Concierge services
- Built in 2025
- New build, modern flat
- Residents Gym Incoming (2026)
- Great transport links
- Located in Kew Bridge Rise
- Communal working space
- 544 sq ft of space

# Jargonelle House 17 Pavana Square, London TW8 0XW

Welcome to this exquisite one-bedroom flat located in the highly sought-after Kew Bridge Rise, specifically at 17 Pavana Square. This new build property, completed in 2025, offers a generous living space of 544 square feet, designed to provide both comfort and style.

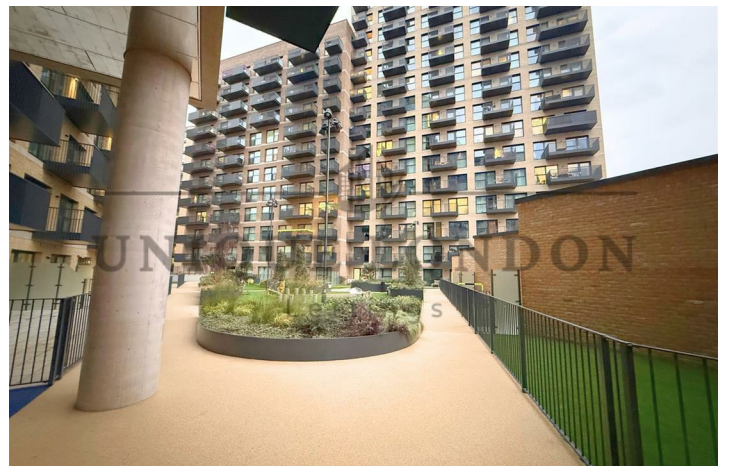
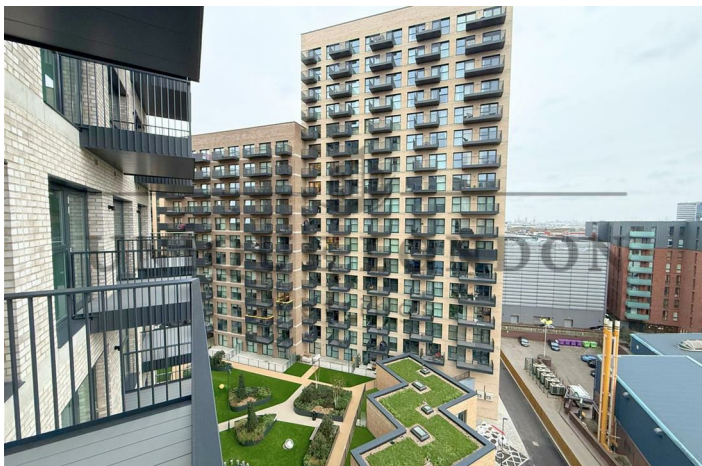
As you enter the flat, you will be greeted by a well-appointed reception room that seamlessly blends modern aesthetics with functionality. The open layout allows for an abundance of natural light, creating a warm and inviting atmosphere. The bedroom is spacious and thoughtfully designed, providing a peaceful retreat for relaxation. The bathroom features contemporary fixtures and finishes, ensuring a luxurious experience.

One of the standout features of this property is the exceptional amenities available to residents. A dedicated 12-hour concierge service is on hand to assist with your needs, providing an added layer of convenience and security. The parcel delivery system ensures that your packages are safely received and stored, making life just a little easier.

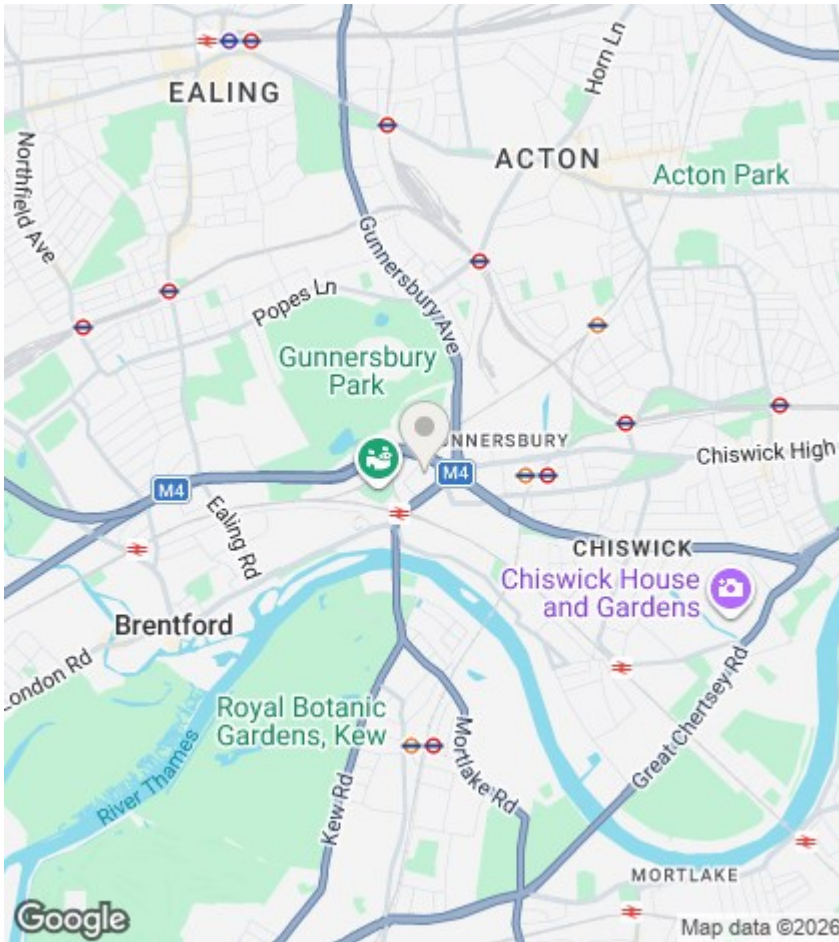
For those who work from home or require a collaborative space, the communal working area is perfect for productivity. Additionally, the stylish lobby serves as an ideal meeting room, allowing you to host guests or colleagues in a professional setting.



Council Tax Band: New Build







## Directions

## Viewings

Viewings by arrangement only. Call to make an appointment.

## EPC Rating:

Energy Efficiency Rating		Current	Potential
Very energy efficient - lower running costs			
(92 plus) <b>A</b>			
(81-91) <b>B</b>			
(69-80) <b>C</b>			
(55-68) <b>D</b>			
(39-54) <b>E</b>			
(21-38) <b>F</b>			
(1-20) <b>G</b>			
Not energy efficient - higher running costs			
<b>England &amp; Wales</b>		EU Directive 2002/91/EC	

**APARTMENT 132**

1 Bedroom  
Sixth Floor  
*Reserved*

7.75m x 3.20m    25'5" x 10'7"

4.90m x 3.25m    16'0" x 10'7"

Area    51 sq m    544 sq ft

1.55m x 3.30m    5'1" x 10'9"

