

**£2,000 Per Month**

- 2 double bedrooms
- Bright and spacious
- Newly carpeted
- Opposite Stockwell tube
- Lambeth Band D
- Ample Storage
- Available immediatley
- Furnished

# Clapham Road | London, SW9

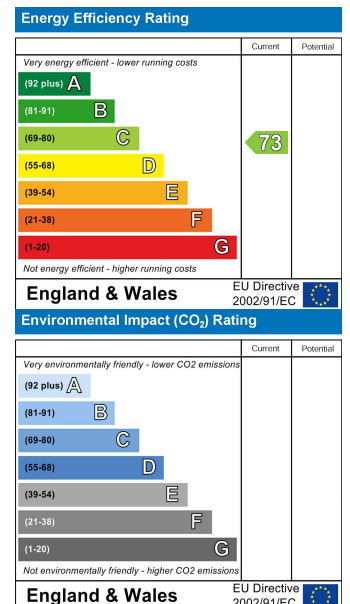
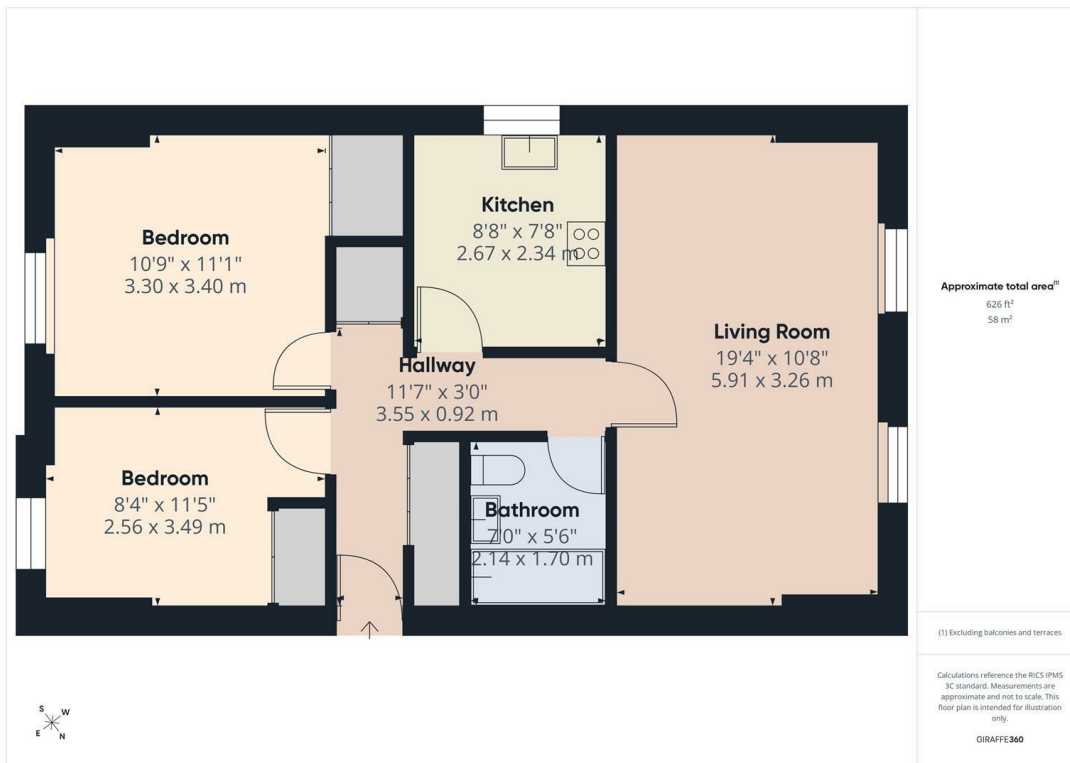


A bright and practical 2-bedroom apartment ideally placed for professionals or couples opposite Stockwell tube station, comprises 2 good-sized double bedrooms, a separate kitchen, and a spacious, bright living room.

Newly carpeted throughout and with excellent storage space. Ideally placed for Stockwell Tube providing both Northern and Victoria Line connections.

Available immediately.

Council Tax - Band D, Lambeth



These particulars are designed to provide a guideline only and cannot be relied upon as a statement of fact. The description represents the opinion of the author and is not intended to provide false or misleading information. Any prospective purchaser should make further checks on its accuracy. All measurements are approximate and floorplans are for representation only.



**Eden Harper**  
64 Battersea Park Road, London, SW11 4JP  
**0207 720 1116**  
info@edenharper.com  
www.edenharper.com