



CLEMENTS
HABBA



For Sale



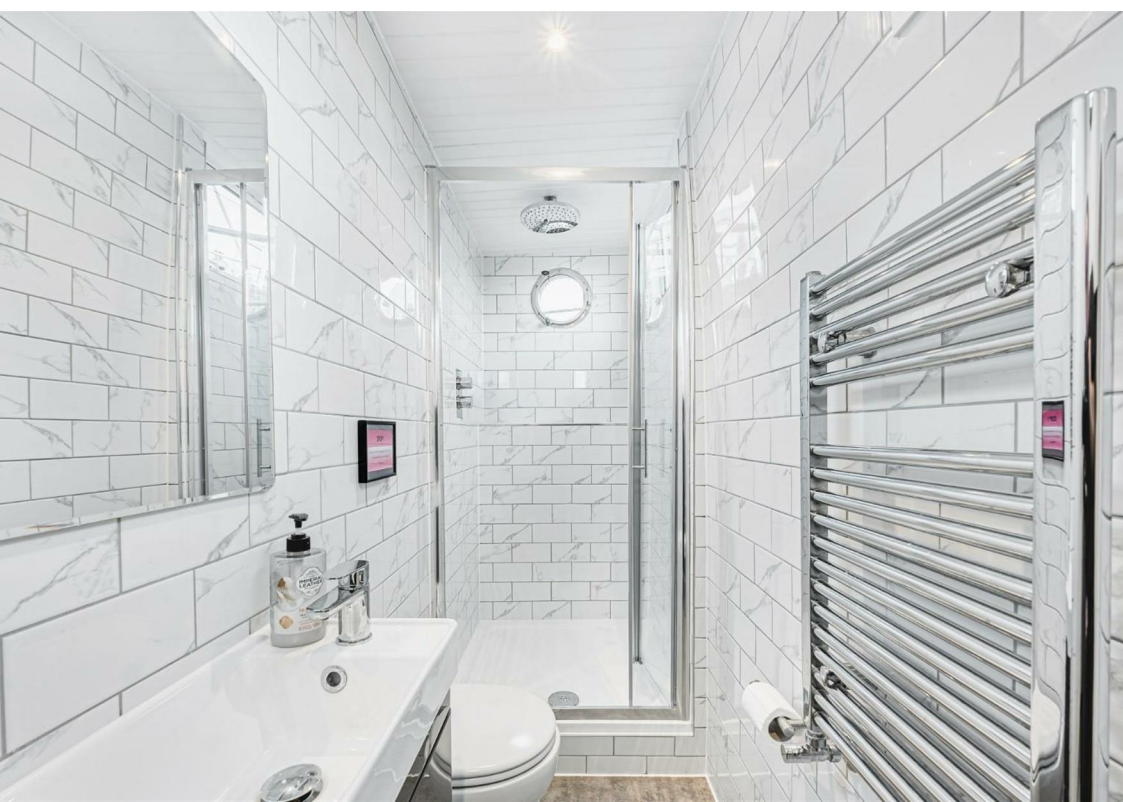
Corney Reach Way, Chiswick, London

£550,000

Non-traditional







Summary Description

A stunning, newly renovated two bedroom, two bathroom, historic houseboat offering over 1100 sq ft of internal space, a large sundeck and located enviably in the prestigious and desirable Chiswick Pier. Chain Free

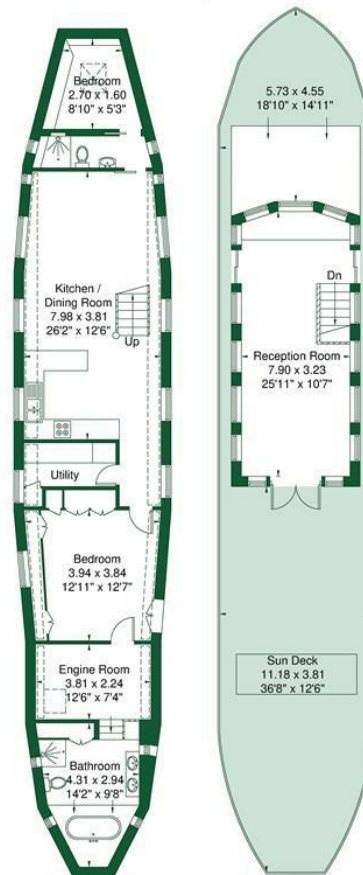
- Stunning Houseboat
- Prestigious Chiswick Pier Mooring, One of 8 Historic Boats at Pier
- 2 Bedrooms, 2 Bathrooms
- Tax Band A, No Stamp Duty
- Parking Space, Lock Up, Electricity and Water Included in Annual Mooring Fee
- Newly Renovated Throughout
- 1190 Sq Ft Internal Space
- Large Sundeck
- Fantastic Master Suite
- Offered Chain Free

Ventana Houseboat

Approximate Gross Internal Area = 99.2 sq m / 1067 sq ft

Reduced Headroom = 11.4 sq m / 123 sq ft

Total = 110.6 sq m / 1190 sq ft



Lower Ground Floor
73.9 sq m / 795 sq ft
Reduced Headroom
11.4 sq m / 123 sq ft

Ground Floor
25.3 sq m / 272 sq ft

Although every attempt has been made to ensure accuracy, all measurements are approximate.
The floorplan is for illustrative purposes only and not to scale.

© www.perspective.co.uk

