

# Love Homes



Amphill Road, Flitwick, Bedfordshire, MK45 1AY

This beautifully presented three-bedroom, chain-free house in Flitwick, Bedfordshire, offers around 809 sq.ft. of stylish, modern living. The ground floor features a bay-fronted living room with a feature fireplace and a 17'8" open-plan kitchen/dining room with herringbone Karndean flooring, induction hob, double oven, integrated dishwasher, washing machine, and sleek worktops—perfect for family life and entertaining. Upstairs, three comfortable bedrooms share a well-maintained family bathroom. Outside, an 85ft easterly-facing rear garden offers a secluded patio, outbuilding, and outside toilet, while a front driveway provides off-road parking for two vehicles.



This property is presented by Duncan Stead - a Love Homes property expert with over 25 years' experience.

Find out more about this property by scanning the QR code.



0.9m



3



1



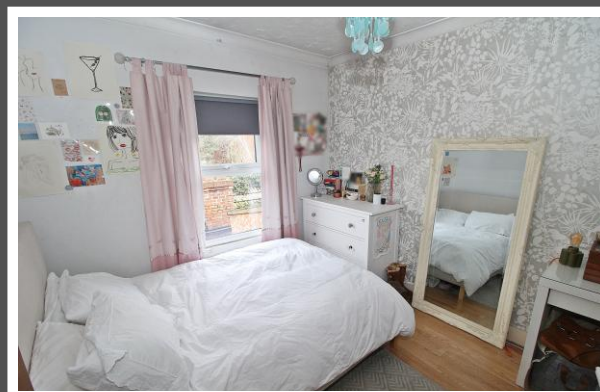
1

Tenure: Freehold

Council Tax: C



"We've loved living here for over 10 years and it has been a wonderful family home, especially while the children were attending Redborne Upper School. The location has suited us perfectly and has made day-to-day family life so easy. The kitchen is without doubt my favourite room in the house. It overlooks the rear garden, and during the warmer months it's lovely to open everything up and sit out on the private patio area — it really feels like an extension of the living space. Like many neighbours along the road, we did consider extending or even adding a loft conversion over the years, but we realised we simply never needed the extra space as the house has worked so well for us as it is. In the winter months, being able to relax in front of a roaring open fire is the icing on the cake and makes the house feel incredibly cosy and welcoming."



GROUND FLOOR

1ST FLOOR



Drawn by Love Homes for illustrative purposes only. Measurements and areas shown are approximate. Made with Metropix ©2026

Score	Energy rating	Current	Potential
92+	A		
81-91	B		
69-80	C		79 C
55-68	D	64 D	
39-54	E		
21-38	F		
1-20	G		



These particulars are set out as a general outline in accordance with the Property Misdescriptions Act (1991) only for the guidance of intending purchasers or lessees, and do not constitute any part of an offer or contract. Details are given without any responsibility, and any intending purchasers, lessees or third parties should not rely on them as statements or representations of fact but must satisfy themselves by inspection or otherwise as to the correctness of each of them. We have not carried out a structural survey and the services, appliances and specific fittings have not been tested. All photographs, measurements, floor plans and distances referred to are given as a guide only and should not be relied upon for the purchase of carpets or any other fixtures or fittings. Gardens, roof terraces, balconies and communal gardens as well as tenure and lease details cannot have their accuracy guaranteed for intending purchasers. Lease details, service ground rent (where applicable) are given as a guide only and should be checked and confirmed by your solicitor prior to exchange of contracts. No person in the employment of Love Homes has any authority to make any representation or warranty whatever in relation to this property. Purchase prices, rents or other prices quoted are correct at the date of publication and, unless otherwise stated, are exclusive of VAT. We retain the copyright in all advertising material used to market this Property. All information is as advised by the seller and subject to change. Council tax bands can be subject to change by the local council.

5 The Russell Centre, Coniston Road, Flitwick, MK45 1QY  
Tel: 01525 713111

Email: [flitwick@lovehomes.uk](mailto:flitwick@lovehomes.uk)

[www.lovehomes.uk](http://www.lovehomes.uk)



**Love Homes**