



## Robin Hood Way, SW15

£1,350,000

A detached, very well presented five double bedroom family home. The property offers plenty of space and light throughout with a large gardens and off street parking for at least three cars.

Situated in Kingston Vale, close to local shops, amenities and Kingston town centre, with good bus links and easy access to the A3 for commuting into central London. Robin Hood Way is conveniently located near Putney, Wimbledon Village and Kingston, the area is known for strong educational facilities and nearby leisure options, including Richmond Park, the River Thames and several golf courses.

### Features

Detached Home  
Five Bedrooms  
Modern Condition  
Good Sized Garden  
Off Street Parking  
Great Location



## Robin Hood Way, SW15

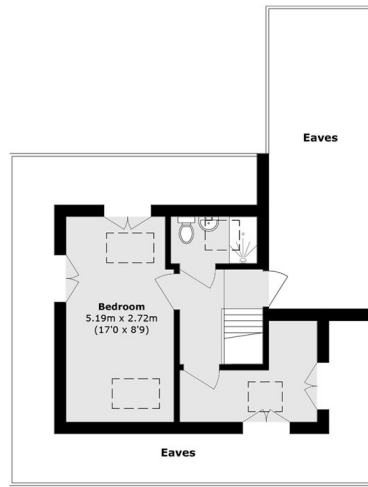
You enter onto a wide entrance hall, there is a generous reception room perfect for hosting that leads onto an open dining room. Towards the rear there is a second reception and a fully fitted bespoke kitchen with a lovely breakfast bar. There is a third reception room towards the front which would be perfect for a home office or a nanny. The entire ground floor is clad in beautiful stone tiles throughout.

On the first floor there is a good sized double bedroom with a luxurious built in wardrobe, there are two further generous double bedrooms and another towards the rear with an en-suite bathroom. There is also a good sized family bathroom. One the second floor there is a well sized master bedroom and a large family bathroom as well as plenty of built in storage.

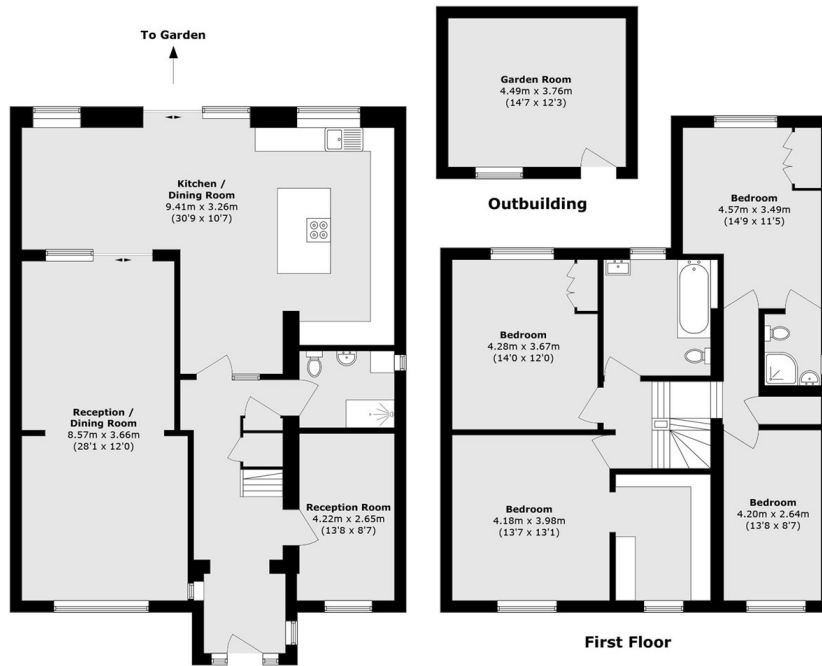
Towards the front there is ample off street parking for at least three cars if not more, there is a large private garden towards the rear and an out building that could be used as a studio but is currently fully equipped as a gym.



# Robin Hood Way, London, SW15



**Second Floor**



**Ground Floor**

**First Floor**

Total area (approx.): 238.7 sq. m (2569.3 sq. ft)  
 Outbuilding area (approx.): 16.9 sq. m (181.9 sq. ft)  
 (Excluding Eaves)