



STOCKWELL DRIVE
MANGOTSFIELD, BRISTOL, BS16 9DW

£280,000



2



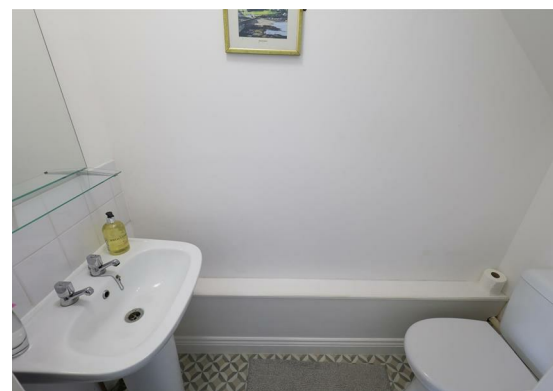
1



1



C



Ground Floor

Hall

Lounge

15'7 x 9'1 max

WC

6'5 x 2'9

Kitchen

12'2 x 11'9

First Floor

Landing

Bedroom

12'3 x 11'11

Bedroom

12'3 max x 8'4

Bathroom

6'11 x 5'9

External

Garden

Garden Room

11'9" x 7'2"

Beautifully presented throughout, this wonderful two-bedroom mid-terrace home offers bright, well-proportioned accommodation perfectly suited to first-time buyers, downsizers, or investors alike. Stepping inside, an entrance hall leads to a lounge, flooded with natural light and benefiting from a useful understairs storage cupboard. A convenient ground floor cloakroom adds practicality, while to the rear of the property the attractive kitchen/dining room forms the heart of the home. Fitted with a range of wall and base units finished with wood-effect doors, the kitchen is equipped with an integrated induction hob, oven and externally vented extractor hood, alongside space for a fridge freezer and washing machine. There is ample room for dining table a fully glazed door opens directly onto the rear garden.

The first floor is accessed via a central landing and comprises two generous double bedrooms together with a well-appointed family bathroom. The bathroom is fitted with a classic white three-piece suite, complemented by a shower over the bath and a heated towel rail.

Outside, the property has a front garden enclosed by railings and laid to Cotswold chippings, creating a low-maintenance approach to the entrance. The enclosed rear garden has been thoughtfully landscaped to provide a variety of spaces for relaxation, including a patio area, a well-maintained level lawn and raised planters for keen gardeners. To the far end of the garden, a decked terrace provides the perfect spot for outdoor dining or unwinding in the warmer months. A substantial workshop benefits from a roof constructed of solar panels and a door within gives rear access gate onto a lane behind the property, adding further convenience.

Combining modern comforts with well-balanced living space and a delightful garden, this wonderful home is ready to be enjoyed from day one.

