



## Earl's Court Square, SW5

£1,135,000

This property is offered with no onward chain benefiting from access to well-maintained communal gardens. It is in a prime location within walking distance of Earl's Court Underground Station and a wide range of local amenities.

Earl's Court Square is conveniently positioned between Earl's Court Road and Warwick Road, offering close proximity to a wide selection of shops, restaurants, and bars. The nearest Underground station, Earl's Court, provides excellent transport links into central London.

### Features

- Two Spacious Bedrooms
- Lift Access
- Access To Communal Gardens
- Immaculate Finish
- No Ongoing Chain
- Abundance Of Natural Light

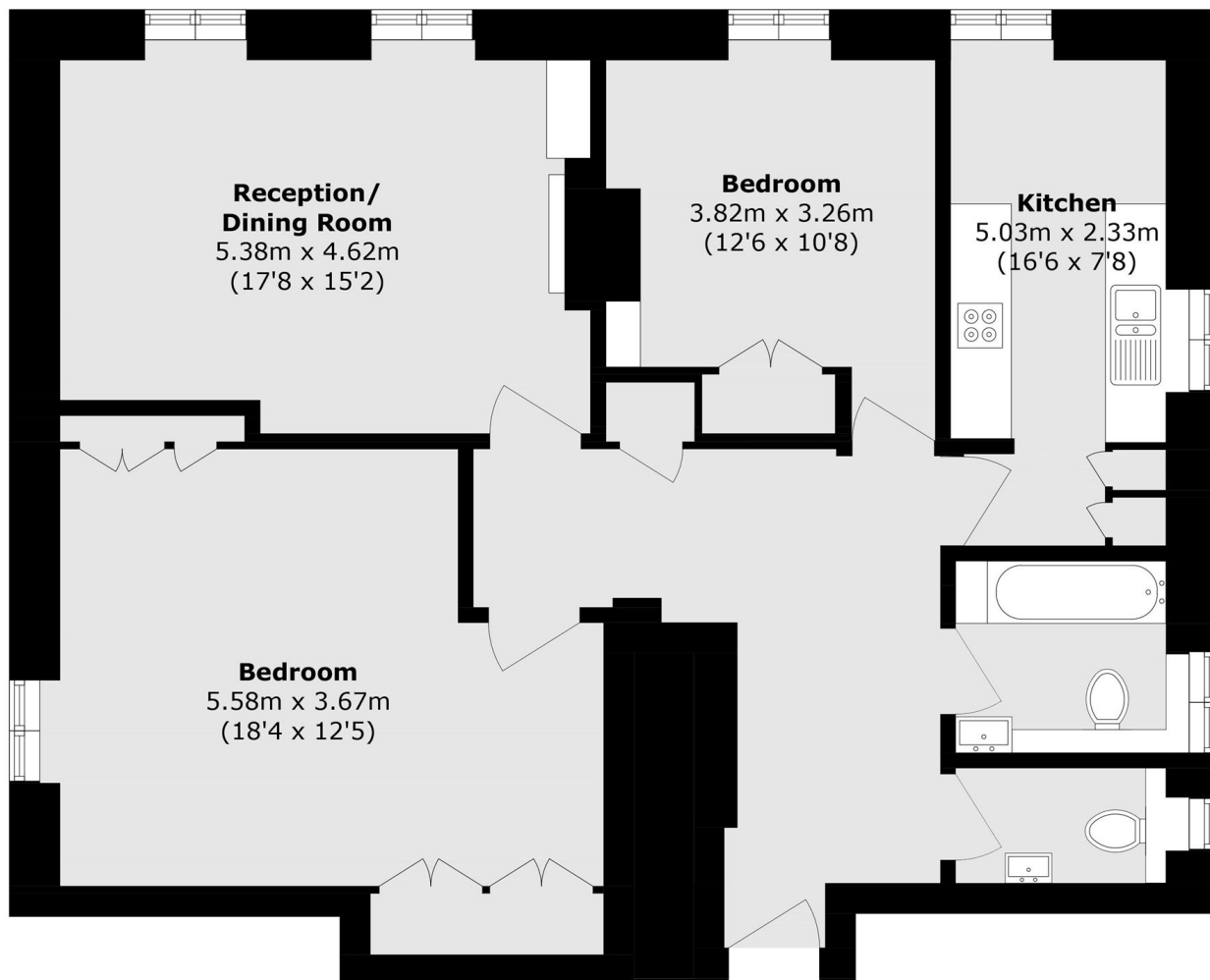


## Earl's Court Square, SW5

A recently refurbished two double bedroom flat situated on the third floor of a beautiful Georgian building, combining classic period charm with modern finishes throughout. The property provides a bright and spacious living room with impressive high ceilings, creating a wonderful sense of space and light, ideal for both entertaining and relaxing. Large windows allow natural light to flood the room, enhancing the elegant proportions typical of Georgian architecture.



# Earl's Court Square, London, SW5



## Third Floor

Total area (approx.): 91.2 sq. m (981.6 sq. ft)