

Burr Close, E1W

£385,000

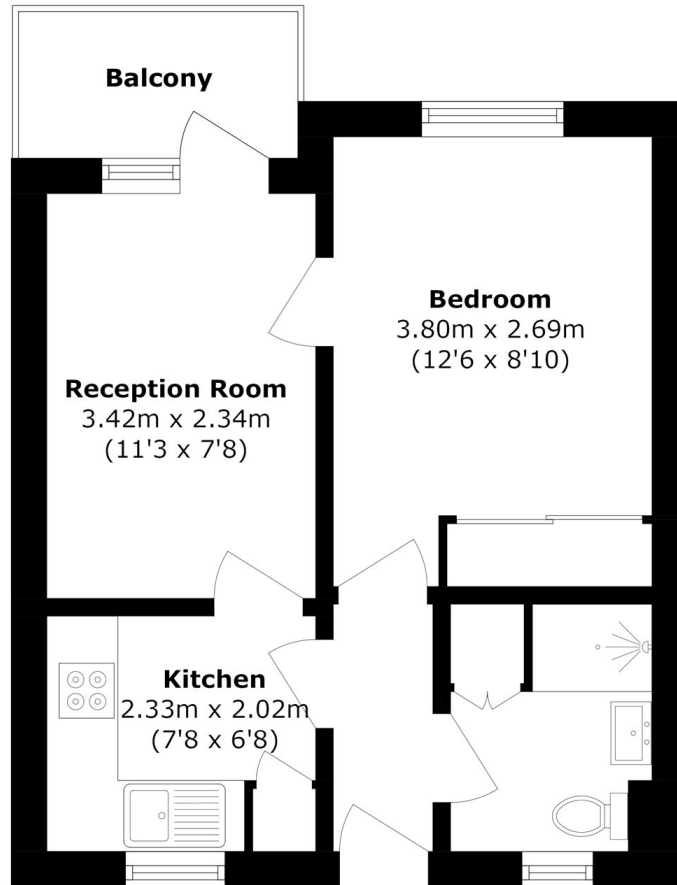
Set within a sought-after secure development, we are pleased to offer this well-presented one-bedroom apartment. The property benefits from a secure entry phone system and a private balcony accessed via the reception room, which provides ample natural light throughout the living space.

Burr Close is conveniently located approximately 0.6 miles from Tower Hill station, providing easy access to the City. St Katharine Docks is also just 0.1 miles away, offering a wide selection of restaurants, bars and local amenities.

Features

- Secure Development
- Balcony
- Entry Phone System
- St Katharine's Dock Location
- Overlooking Gardens
- Natural Light

Burr Close, London, E1W



Total area (approx.): 29.7 sq. m (319.7 sq. ft)
Balcony area (approx.): 2.9 sq. m (31.2 sq. ft)